

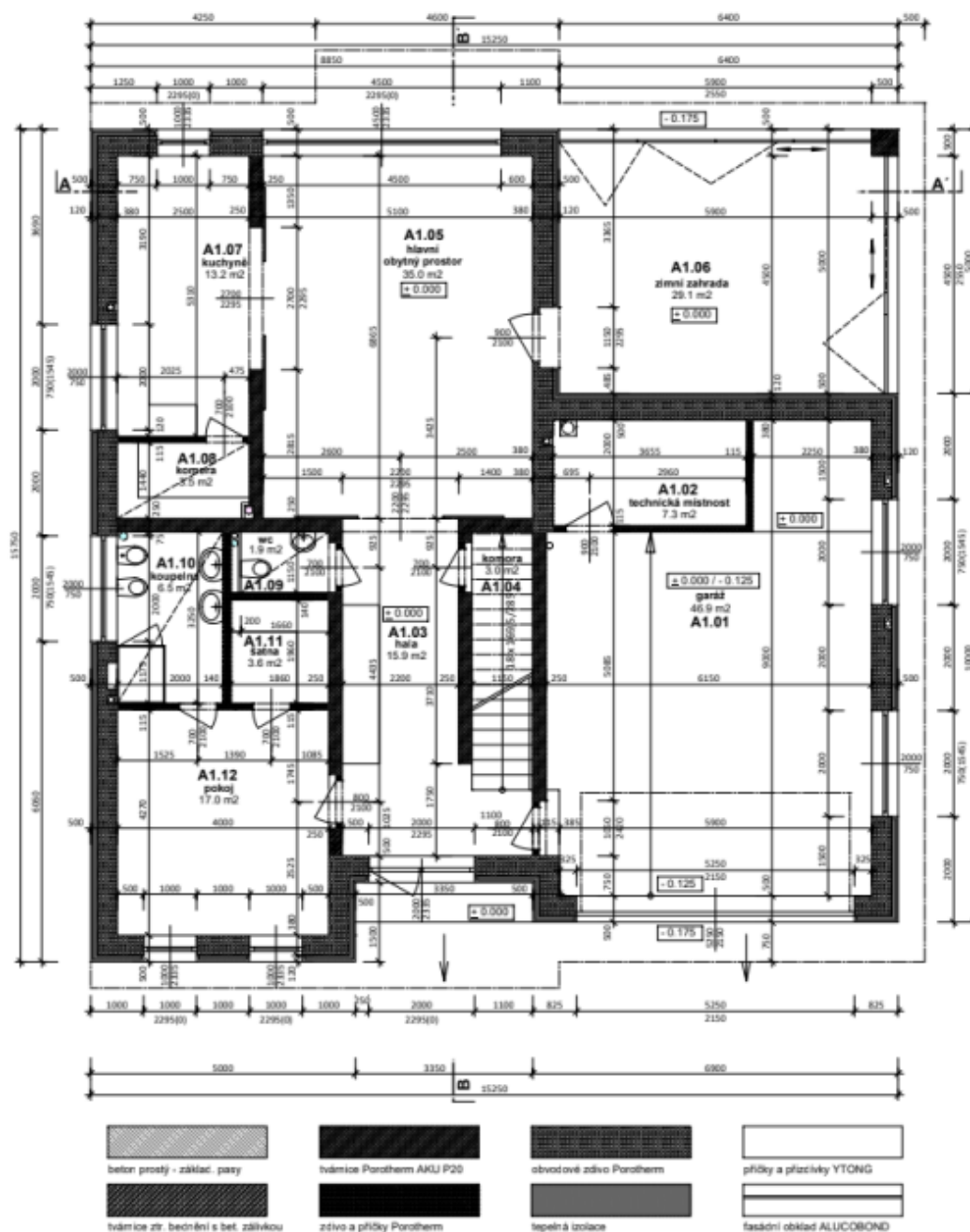


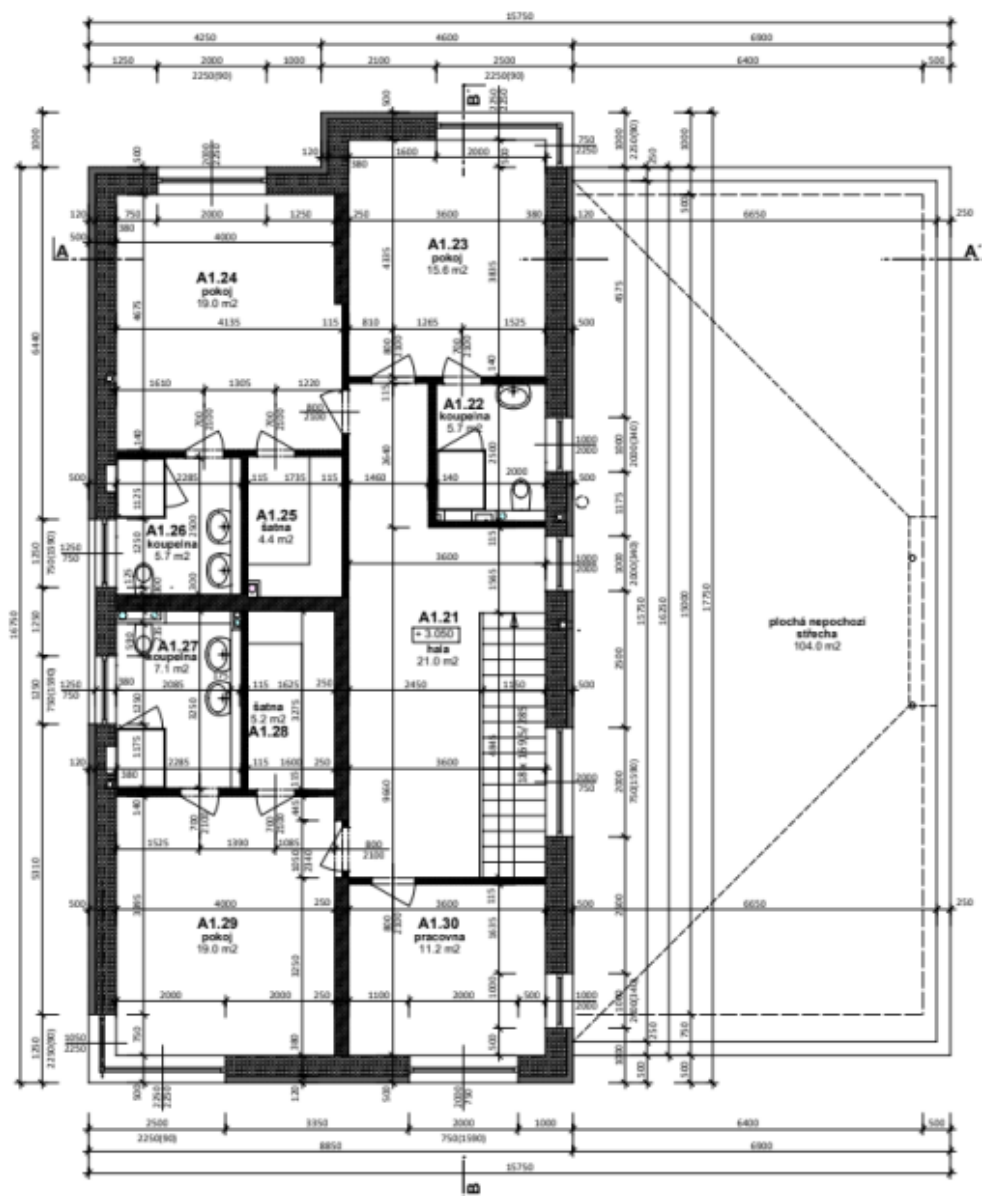
Pozemek









938 m², Praha 4, Šeberov, V Březí

Prodáno







			
beton strop - základ, pasy	tvárnice Porotherm AKU P20	otvácivé zdivo Porotherm	průčelní a příčky YTONG
			
tvárnice ztv. betonářská s bet. zábrškou	zdivo a příčky Porotherm	tepelná izolace	fasádní obklad ALUCOBOND