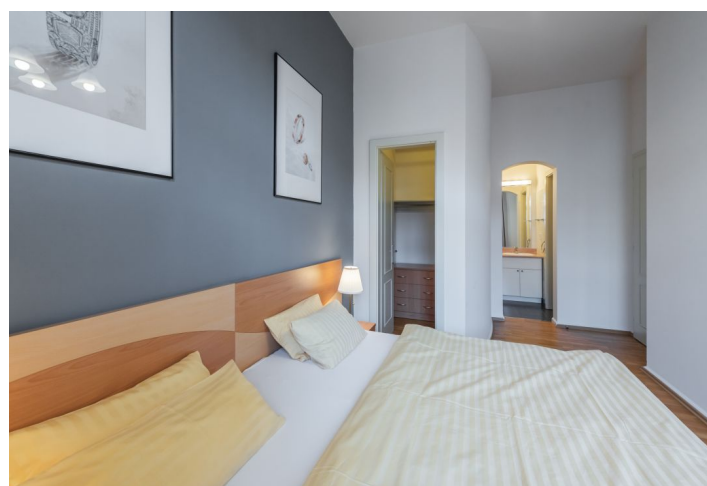




Apartment Two-bedroom (3+kk)

Rented

92 m², Prague 2, Vinohrady, Belgická





Apartment Two-bedroom (3+kk)

Rented

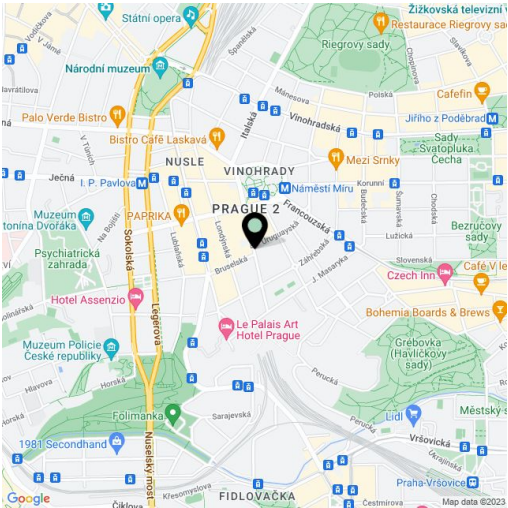
92 m², Prague 2, Vinohrady, Belgická

Total area	92 m²
Parking	Parking available.
Garage	Yes
Cellar	-
Service price	Services and utilities are billed separately (CZK 3,400/month fixed fees + CZK 2,000/person/month deposit for utilities).
PENB	G
Reference number	9042
Available from	Immediately

This fully furnished apartment with 2 balconies is on the second floor of a renovated traditional building with an elevator. Located on a quiet tree-lined street in an attractive residential part of Prague 2 - Vinohrady, just a minutes' walk from the Náměstí Míru metro station and tram stops. A highly sought-after location within easy reach of the city center and with full amenities nearby, within walking distance of Gröbovka and Folimanka parks.

The apartment has a fully fitted and equipped kitchen open to the living/dining room with access to the balcony, two bedrooms with walk-in closets and en-suite bathrooms, one also with a balcony, and a utility room. The bathrooms are also accessible from the hall.

High ceilings, hardwood parquet floors, tiles, built-in wardrobes, recessed lighting, washer, dishwasher, microwave oven, TV, Internet and satellite TV connections, security bar on the entry door. Garage parking can be arranged at CZK 2,000/month + VAT.



* Area of the unit according to the Civil Code. The area consists of the sum total area of the entire unit bounded by perimeter walls.