



Apartment Two-bedroom (3+kk)

Rented

144 m², Prague 1, Nové Město, Opatovická





Apartment Two-bedroom (3+kk)

Rented

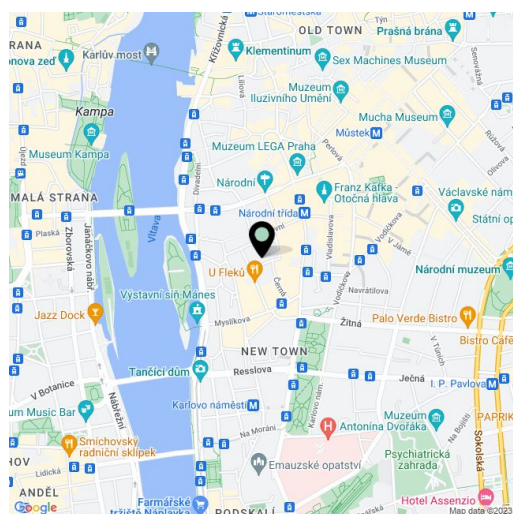
144 m², Prague 1, Nové Město, Opatovická

Total area	144 m ²
Parking	-
Cellar	-
PENB	G
Reference number	8411
Available from	Immediately

Completely furnished fully refurbished 2-bedroom design flat on the 4th floor of a building with no lift right in the Prague city center. Quiet location moments from the Vltava embankment and the National Theatre, with tram and metro connections (Národní třída).

The apartment features a spacious living room with an open kitchen and eating area, 2 separate bedrooms, bathroom with bath tub and toilet, guest toilet, and an open entry hall with built-in storage.

Air-conditioning, wood floors, built-in storage, security door, central switch, atelier windows, skylights, fireplace, washer, dryer, alarm. Common building charges (1000/person/month) and utilities are billed separately.



* Area of the unit according to the Civil Code. The area consists of the sum total area of the entire unit bounded by perimeter walls.



Apartment Two-bedroom (3+kk)

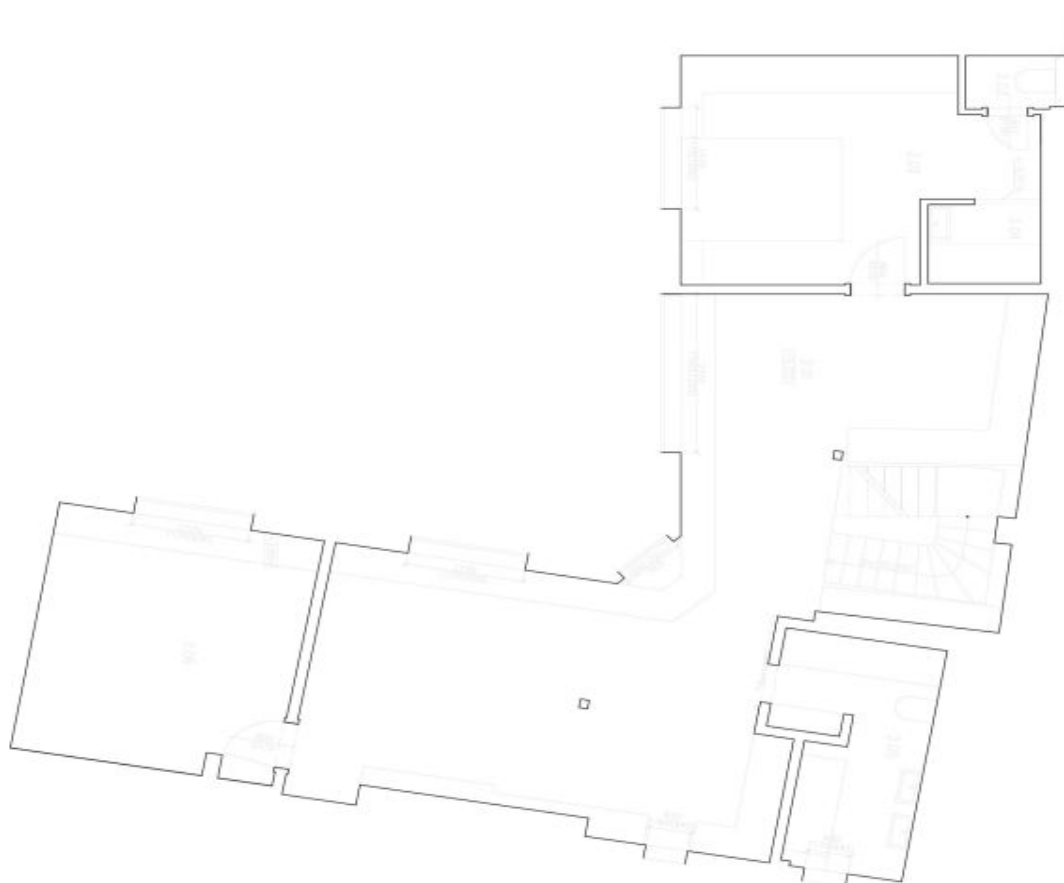
Rented

144 m², Prague 1, Nové Město, Opatovická

ZAMĚŘENÍ PLOCHY BRNŮ 2011

Opatovická byr 8	
kod	plocha(m ²)
1.01	12,06
1.02	16,55
1.03	4,26
1.04	10,48
2.01	53,27
2.02	17,49
2.03	1,39
2.04	2,41
2.05	8,36
2.06	17,18
suma	143,05 m²

SPROVNÍ PLOCHA



VRŮCHNÍ PLOCHA

Opatovická 14 byr 8 - zaměřen
01