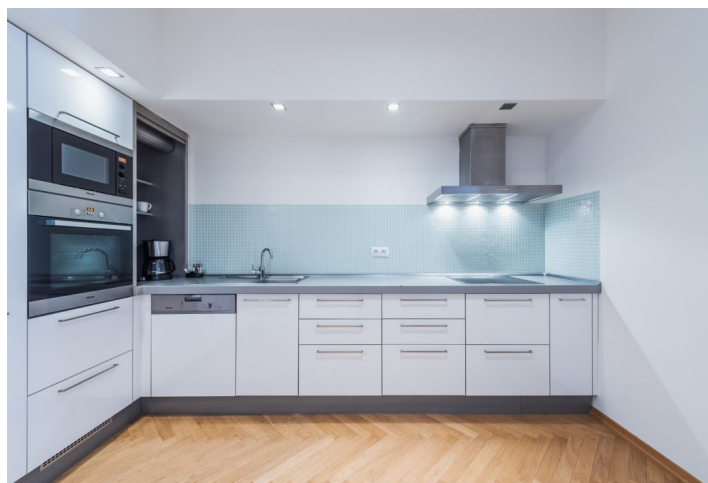




Apartment Two-bedroom (3+kk)

Rented

143 m², Prague 1, Nové Město, Opatovická





Apartment Two-bedroom (3+kk)

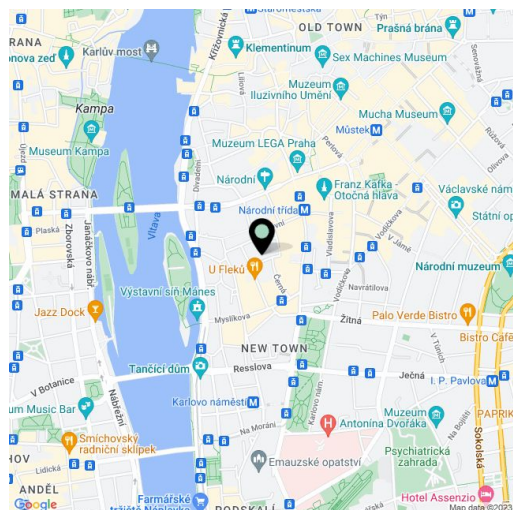
Rented143 m², Prague 1, Nové Město, Opatovická

Total area	143 m ²
Parking	Garage parking is available at CZK 2000/month.
Garage	Yes
Cellar	Yes
PENB	G
Reference number	8262
Available from	Immediately

This furnished, fully renovated 2-bedroom 2-bathroom apartment is on the fourth floor of a well kept and secure renovated traditional building with a lift. Well located in a quiet street in the historic center of Prague, just moments from the Vltava riverbank and the National Theatre. Just a few min. walk from trams and Národní třída metro station, the Žofín Island and the Mánes Exhibition Hall, with full amenities in the immediate vicinity.

The interior includes a living room with a fully fitted open plan kitchen and a dining area, two bedrooms with built-in wardrobes, two bathrooms each with a sink and toilet (walk-in shower / bathtub), and an open entrance hall with built-in wardrobes.

Solid wood parquet floors, tiles, security entry door, washing machine, **Miele** kitchen appliances incl. a dishwasher and a microwave oven, TV, video entry phone, alarm. **Garage parking** is available in the courtyard of the building at CZK 2000/month. Common building charges CZK 1000/person/month. Gas CZK 1500/month. Electricity is billed separately (transfer to the tenant).



* Area of the unit according to the Civil Code. The area consists of the sum total area of the entire unit bounded by perimeter walls.