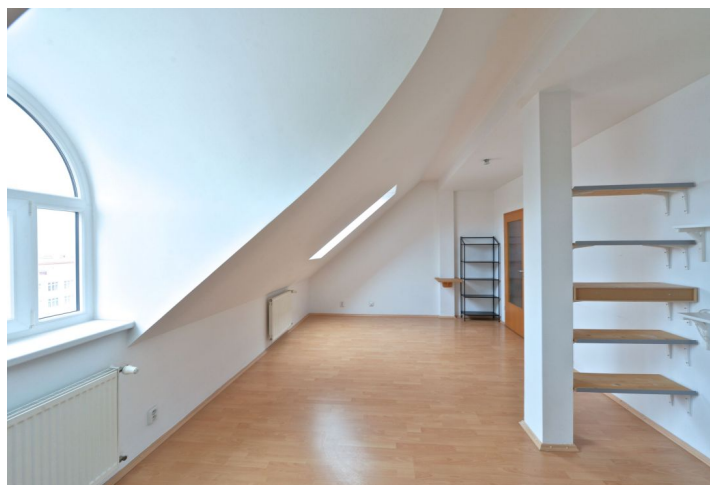




## Apartment Three-bedroom (4+kk)

Rented

150 m<sup>2</sup>, Prague 6, Střešovice, Nad Panenskou





## Apartment Three-bedroom (4+kk)

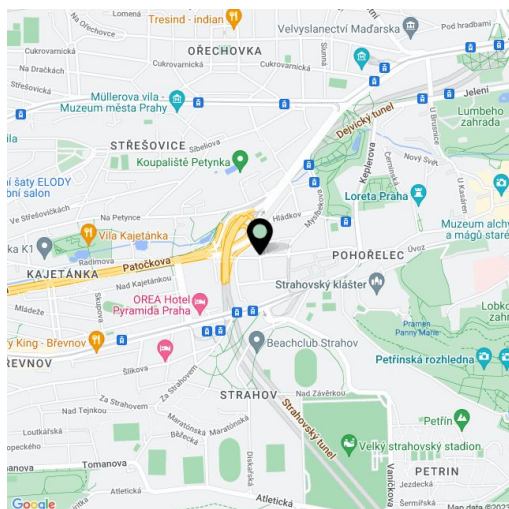
**Rented**150 m<sup>2</sup>, Prague 6, Střešovice, Nad Panenskou

Total area	150 m <sup>2</sup>
Parking	-
Cellar	-
PENB	G
Reference number	8003
Available from	Immediately

**Unfurnished 3-bedroom 2-bathroom split-level attic flat with a winter garden situated on the fifth floor of a completely renovated building with a lift. Located within walking distance of the Prague Castle and Petynka swimming pool, near the Ladronka park, with quick connections to metro and the city center.**

The lower level includes an open living room with dining area, fully fitted kitchen and access to the winter garden (can be partly opened and used as a terrace), one bedroom with a spacious fitted walk-in closet, bathroom with tub, a guest toilet, and entry hall. Upstairs is an open gallery (can be a study), two bedrooms, and shower bathroom with toilet.

Wood floating and tile floors, built-in storage, independent gas heating, washer, dishwasher, video entry phone, alarm, satellite TV connection, chip operated lift. Common building charges CZK 625/person/month. Gas and electricity is transferred to the tenant.



\* Area of the unit according to the Civil Code. The area consists of the sum total area of the entire unit bounded by perimeter walls.