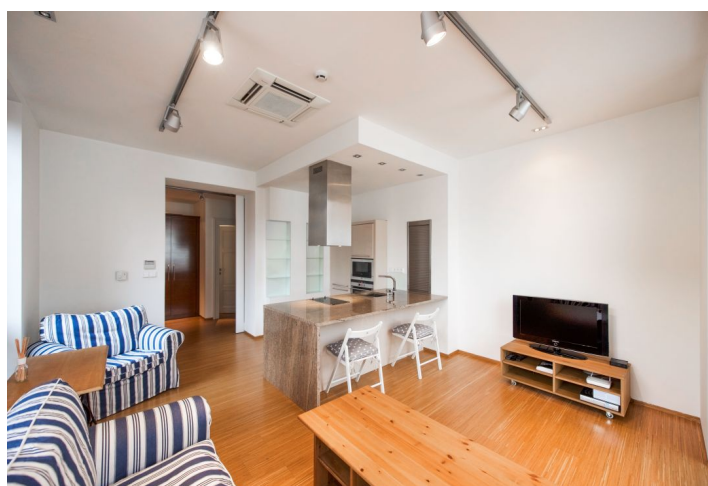
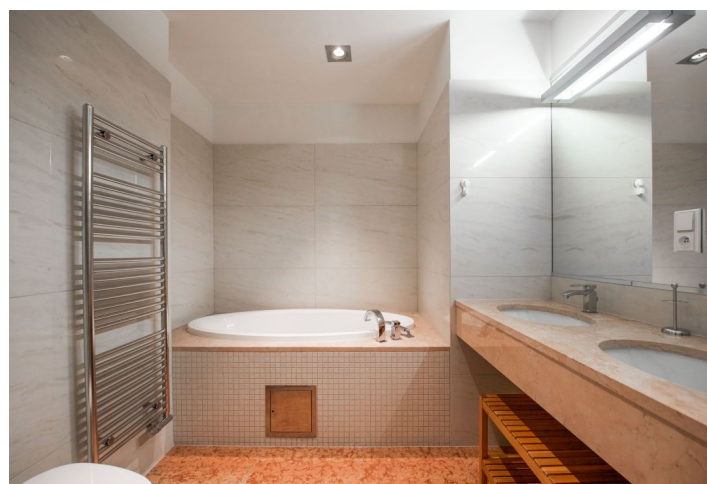
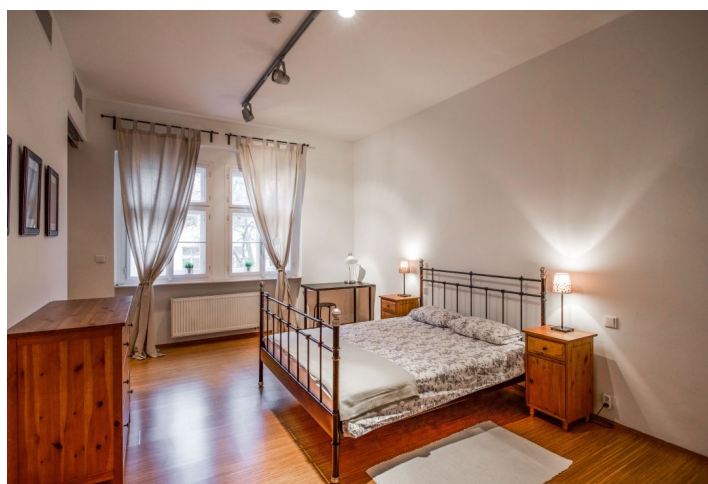




Apartment One-bedroom (2+kk)

Rented

60 m², Prague 1, Nové Město, Truhlářská





Apartment One-bedroom (2+kk)

Rented

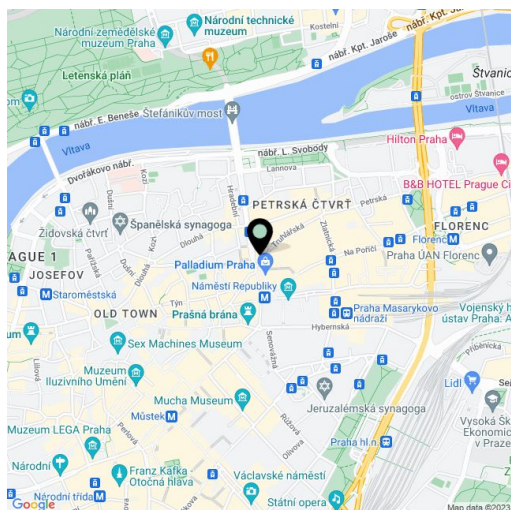
60 m², Prague 1, Nové Město, Truhlářská

Total area	60 m²
Parking	Yes
Cellar	-
Service price	Monthly deposit for common building charges, water, and heating CZK 6,000. Electricity is billed separately.
PENB	G
Reference number	7875
Available from	Immediately

High-quality furnished apartment on the 3rd floor of a classic late 19th century building, superbly renovated with attention to detail and retrofitted with an elevator, offering modern living, high quality finishings, and a lively central location. The apartment is situated on a quiet street mere steps from **Náměstí Republiky Square** with the **Palladium** shopping mall, tram stops, and a metro station. A ten-minute walk to **Old Town** as well as to **Wenceslas Square**.

The apartment has an entry hall with **built-in wardrobes**, a corner living room with a fully fitted open plan kitchen and floor-to-ceiling windows facing the courtyard, one bedroom with an en-suite bathroom (bathtub, double sink, toilet with bidet shower), and a guest toilet.

Air-conditioning, quality materials, bamboo flooring, heated tiles in the bathroom, central gas heating, Sykora kitchen, washer, dryer, dishwasher, microwave oven, **alarm** that can be connected to a security agency, TV, video entry phone, camera system in the building.



* Size of the unit according to the Housing Act.
The area consists of the sum total of the internal area of every room.