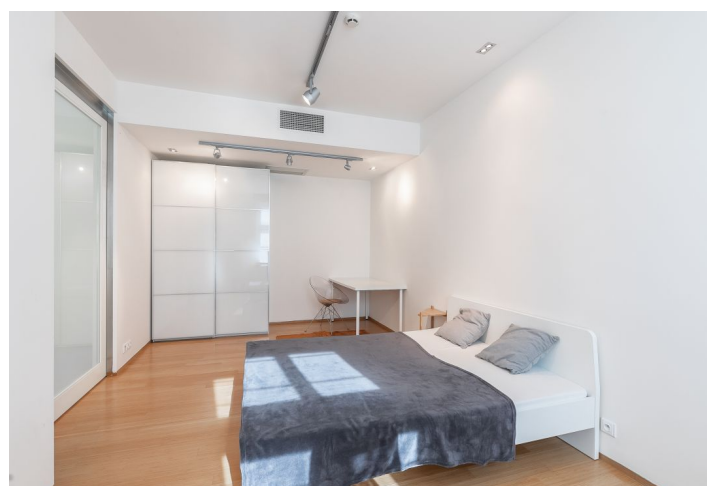




## Apartment Two-bedroom (3+kk)

Rented

106 m<sup>2</sup>, Prague 1, Nové Město, Truhlářská





# Apartment Two-bedroom (3+kk)

Rented

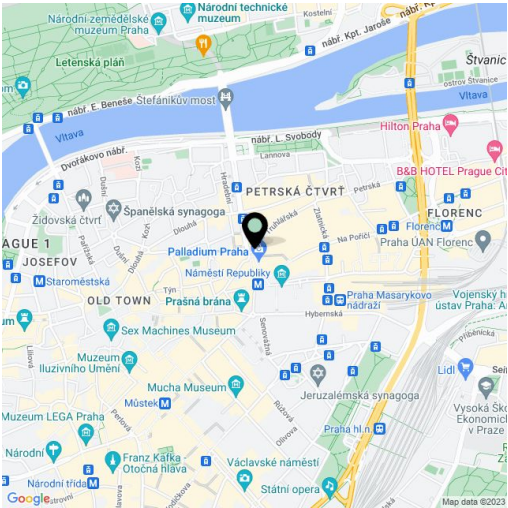
106 m², Prague 1, Nové Město, Truhlářská

Total area	106 m²
Parking	Parking space included.
Garage	Yes
Cellar	-
Service price	Common building charges, water, heating CZK 8,000month. Electricity will be transferred to the tenant.
PENB	G
Reference number	7864
Available from	Immediately

Centrally located, this fully refurbished and furnished apartment on the 4th floor of a classic late 19th century building, superbly renovated with attention to detail and retrofitted with an elevator, offers modern living, high-quality finishes, and a lively central location. The apartment is situated on a quiet street mere steps from Republic Square with the Palladium shopping mall, tram stops, and a metro station. A ten-minute walk to the Old Town as well as Wenceslas squares.

The interior features a spacious entrance hall, a bright living room with a fireplace and fully fitted open plan kitchen, a master bedroom with an ensuite bathroom (bathtub, walk-in shower, sink, toilet), a second bedroom, and a guest toilet with a sink.

Air-conditioning, security entry door, bamboo floors, heated tiles in the bathroom, marble kitchen countertop, central gas heating, sliding glass interior doors, washer, dryer, dishwasher, microwave oven, TV, Wi-Fi, alarm that can be connected to a security agency, video entry phone, camera system in the building. The apartment can be rented without furniture or for a short term of six months at a higher rent. A parking space is included.



\* Area of the unit according to the Civil Code. The area consists of the sum total area of the entire unit bounded by perimeter walls.