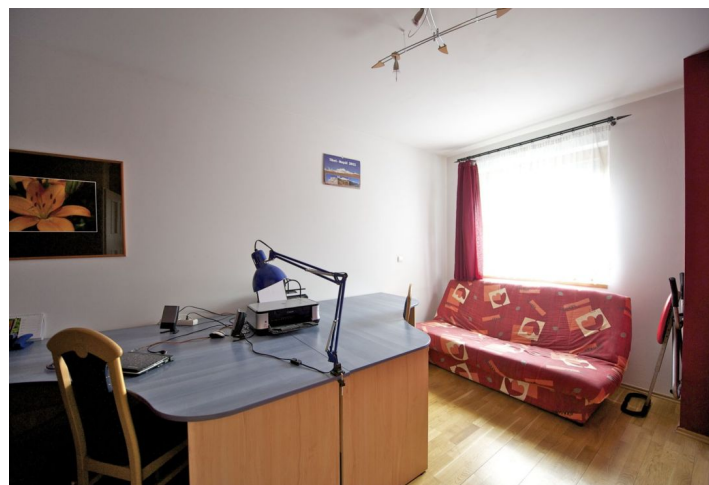




## Apartment Three-bedroom (4+kk)

Sold

111 m², Prague 6, Vokovice, Tibetská





## Apartment Three-bedroom (4+kk)

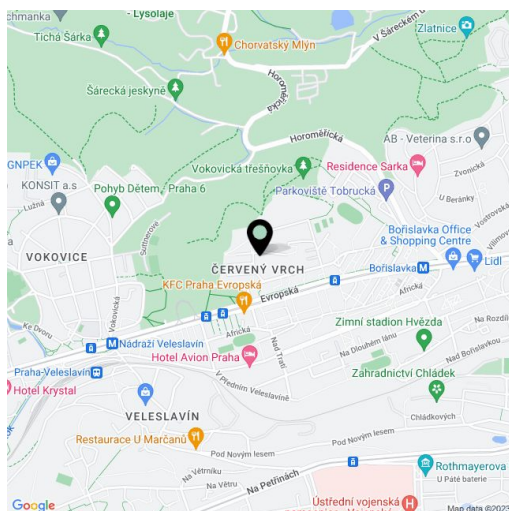
**Sold**

111 m², Prague 6, Vokovice, Tibetská

Total area	147 m²
Floor area*	111 m²
Terrace	36 m²
Parking	1 underground garage parking space included in the price
Garage	Yes
Cellar	Yes
PENB	G
Reference number	7226

Three bedroom apartment with a large terrace on the ground floor of a new building with reception and security in the Terasy Červený Vrch residential project. Located in the vicinity of the Divoká Šárka natural preserve, just a 5 minute walk to the tram stop.

The apartment is comprised of an entry hall, a living room with fully-equipped kitchen and access to the terrace, 2 bedrooms, a study or guest bedroom, a bathroom with a toilet, double sink, and bathtub, as well as a separate 2nd toilet, a laundry room, and a storage room. High-quality features include wooden floors, built-in wardrobes, aluminum blinds, a safety door, an alarm system, and a safe. The interior measures 111 m², and the terrace is a generous 36 m². The purchase price includes one garage parking space and a brick cellar of 4m² in the building. Very quiet location; family-friendly with a kindergarten, as well as primary and grammar schools within walking distance.



\* Area of the unit according to the Civil Code. The area consists of the sum total area of the entire unit bounded by perimeter walls.