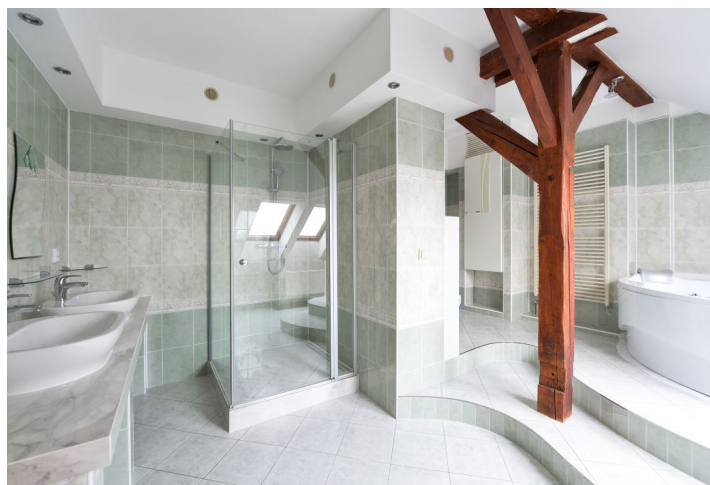




## Apartment Two-bedroom (3+1)

Rented

160 m<sup>2</sup>, Prague 6, Bubeneč, Terronská





## Apartment Two-bedroom (3+1)

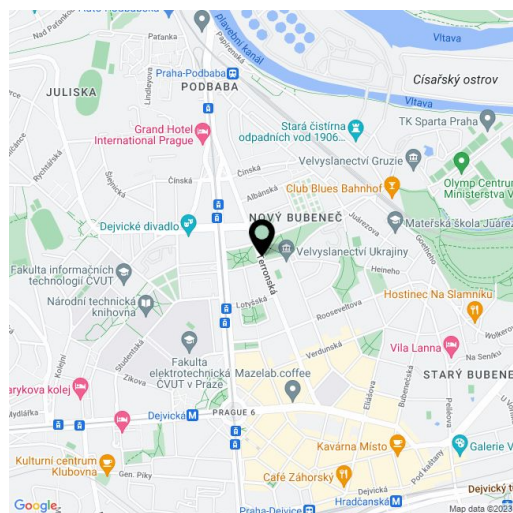
**Rented**160 m<sup>2</sup>, Prague 6, Bubeneč, Terronská

Total area	160 m <sup>2</sup>
Parking	A separate on-site garage.
Garage	Yes
Cellar	-
PENB	G
Reference number	5214
Available from	Immediately

This is a fully newly refurbished, fully furnished 2-bedroom split-level attic apartment with a terrace and a balcony, on the fourth floor of a well kept, renovated residential building with a lift and a shared back yard garden with a children's playground. Located in a prestigious Prague 6 neighborhood with numerous embassies, within walking distance of the Technical University Campus, the Vltava riverbank and the largest park in Prague, Stromovka, just a few short tram stops from Dejvická metro station (6 min. to the city center). Conveniently located for the international schools in Prague 6 and the airport, with complete amenities within easy reach.

The lower level features a fully fitted eat-in kitchen, a living room, a **walk-through closet**, a bedroom with a **walk-in closet** and a **terrace** with far reaching views including the Prague ZOO and the Botanical Garden, plus a full bathroom equipped with a **massage bath**, a walk-in shower, a bidet, a toilet, a TV and floor heating. The upper floor offers a bedroom with a **balcony**, an open guest bedroom (could be a study or a playroom), and a separate toilet.

**Solid wood parquet floors**, vinyl and laminated floors, tiles, built-in storage, security entry door, dishwasher, 3 TV sets, air-conditioning unit, garden furniture, barbecue grill, alarm connected to a security agency, video entry phone, UPC cable connection for the high speed Internet and satellite reception, lift to the third floor. An on-site **garage** is included. Deposit for service charges, utilities and the UPC: CZK 6000/per month.



\* Area of the unit according to the Civil Code. The area consists of the sum total area of the entire unit bounded by perimeter walls.