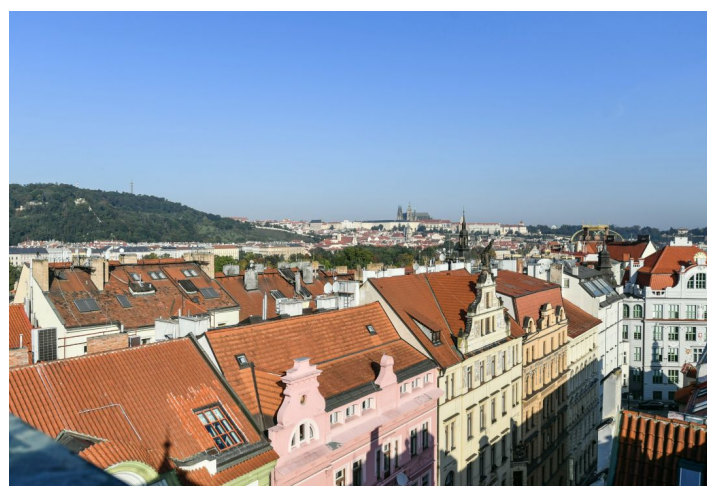
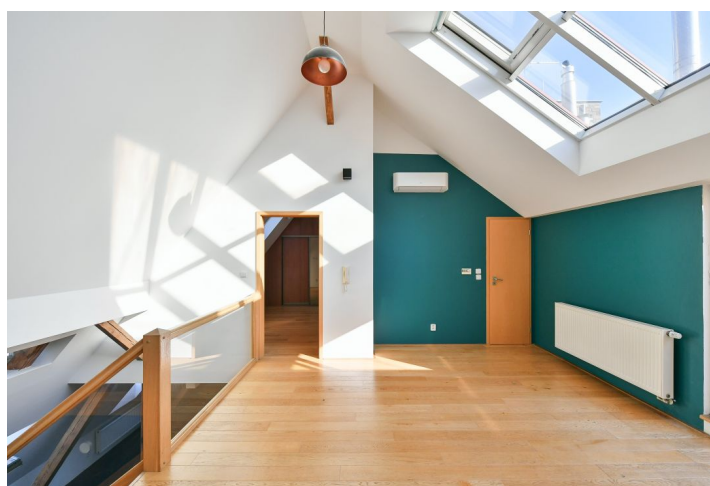
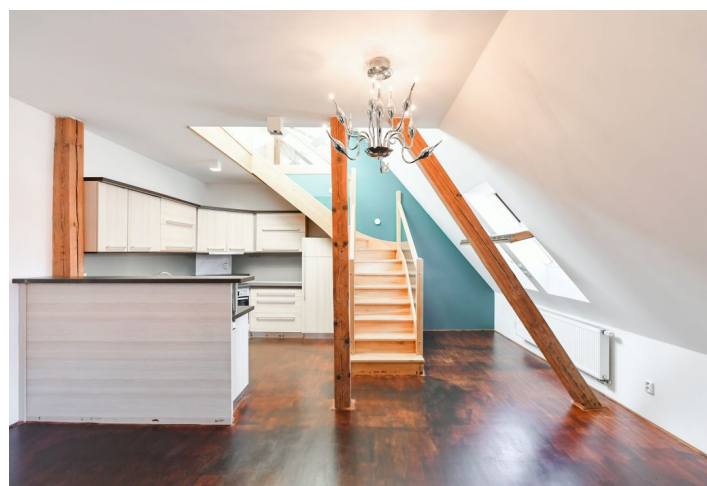




## Apartment Three-bedroom (4+kk)

Rented

181 m<sup>2</sup>, Prague 1, Nové Město, Myslíkova





# Apartment Three-bedroom (4+kk)

Rented

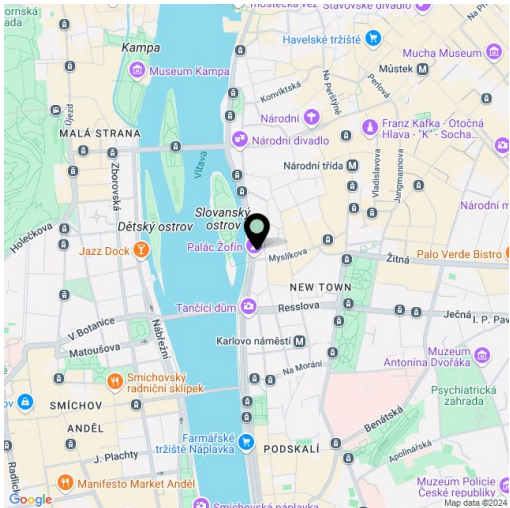
181 m², Prague 1, Nové Město, Myslíkova

Total area	189 m²
Floor area*	181 m²
Terrace	8 m²
Parking	-
Cellar	Yes
Service price	Monthly deposit for services CZK 4,000. Electricity and gas is billed separately.
PENB	G
Reference number	4788
Available from	Immediately

Benefiting from a central location, this unfurnished air-conditioned split-level attic unit with a terrace is situated on the fifth floor of a renovated traditional corner building from the early 20th century, with an elevator. Located just a stone's throw from the Vltava River, a mere five-minute walk to the National Theater, metro, and trams, within easy reach of numerous fine restaurants, cafes, and bars, but also places where you can relax such as the Žofín, Střelecký, and Kampa Islands.

The lower level includes a living room with a fully fitted open plan kitchen, a guest toilet, and an open entry hall. The upper floor features a spacious open gallery with access to the terrace, a master bedroom with a walk-in closet and en-suite bathroom, one bedroom with built-in wardrobes, a third walk-through bedroom (or study), family bathroom, an open lounge (second living room), a utility room, and storage space up in the "tower."

Bathtub, sink, and toilet in each bathroom, wooden floors and stairs, carpets, security entry door, washer, dishwasher, microwave oven, audio entry phone, cellar, chip entry to the building.



\* Size of the unit according to the Housing Act.  
The area consists of the sum total of the internal area of every room.