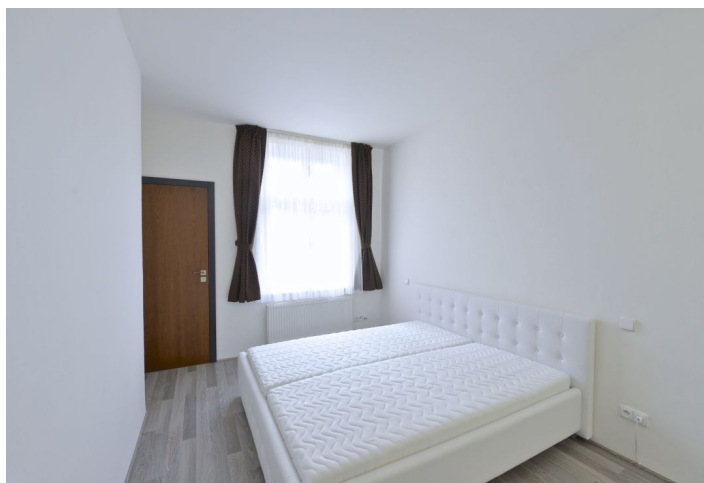
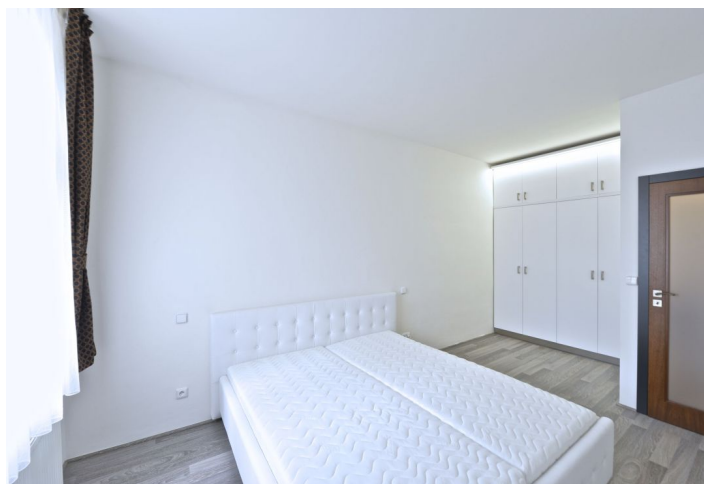




## Apartment Two-bedroom (3+kk)

68 m², Prague 2, Vinohrady, Slezská

**Rented**





# Apartment Two-bedroom (3+kk)

Rented

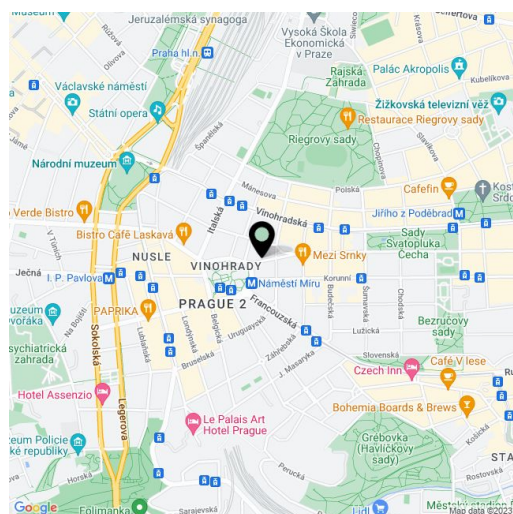
68 m², Prague 2, Vinohrady, Slezská

Total area	68 m²
Parking	Covered parking in the yard at CZK 2500/month.
Cellar	-
PENB	G
Reference number	4742
Available from	Immediately

Reconstructed bright, fully furnished 2-bedroom flat on the 4rd floor of a completely reconstructed building with a new lift and security cameras for the main entrance and garage. Located in the Vinohrady neighborhood popular with foreigners and the expat community, minutes to metro and trams at Náměstí Jiřího z Poděbrad Square. Ample shopping, restaurants, cafes and bars in the area (incl. the Flora shopping mall).

There is living room with fully fitted eat-in kitchen with breakfast bar, master bedroom with en-suite shower bathroom with toilet and laundry room with washer, 2nd bedroom/study accessed from the living room, and a separate toilet with sink.

Features include security door, parquet and tile floors, large windows, Villeroy & Boch bathroom fittings and Italian tiles, floor heating in bathroom and WC, dishwasher, flat screen TV, satellite TV connection, alarm, audio entry phone. Shared garden with benches, shared basement storage. Covered parking in the yard at CZK 2500/month. Common building charges and deposit for utilities approx. CZK 3500/month/2 persons.



\* Area of the unit according to the Civil Code. The area consists of the sum total area of the entire unit bounded by perimeter walls.