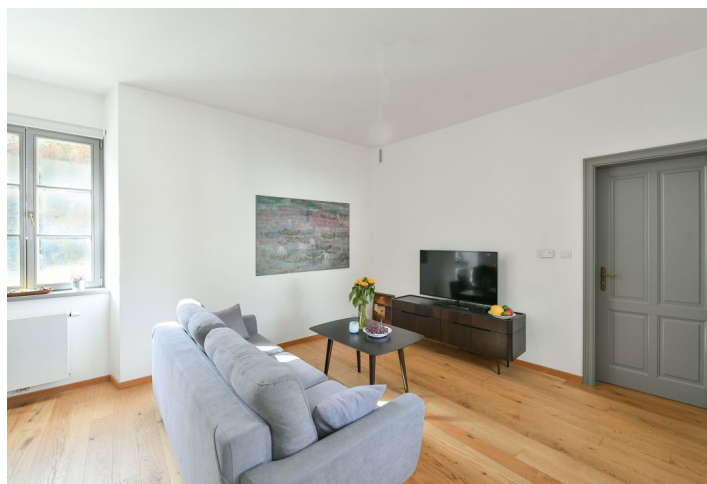




## Apartment One-bedroom (2+1)

63 m², Prague 6, Dejvice, U Matěje

Rented





## Apartment One-bedroom (2+1)

**Rented**

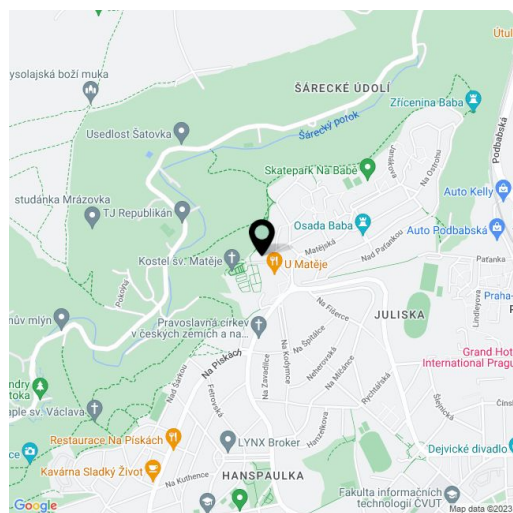
63 m², Prague 6, Dejvice, U Matěje

Total area	63 m²
Parking	Garage parking.
Garage	Yes
Cellar	Yes
PENB	B
Reference number	43989
Available from	Immediately

This modern fully furnished 1-bedroom apartment is on the first floor of the gated Hendlův dvůr Residence, a former homestead from the mid 16th century that has been meticulously renovated. Situated in a quiet green residential area on the edge of the highly sought-after Hanspaulka neighborhood bordering the Šárka Valley, a location with quick access to the city center and amenities, with bus connections to the Bořislavka and Hradčanská metro stations, convenient to the airport and international schools, and moments from the Juliska sports stadium.

The apartment features a living room, a fully fitted kitchen with a dining area, a bedroom with built-in wardrobes, a bathroom including a walk-in shower and a toilet, and an entrance hall.

Heat recovery ventilation, hardwood parquet floors, tiles, security entry door, central heating, washer/dryer, AEG kitchen appliances, dishwasher, induction cooktop, **cellar**, chip entry to the building. A **garage parking** space is included. Monthly deposit for service charges, water, heating, and garage maintenance: CZK 5,500. Electricity is billed separately (transferred to the tenant).



\* Area of the unit according to the Civil Code. The area consists of the sum total area of the entire unit bounded by perimeter walls.