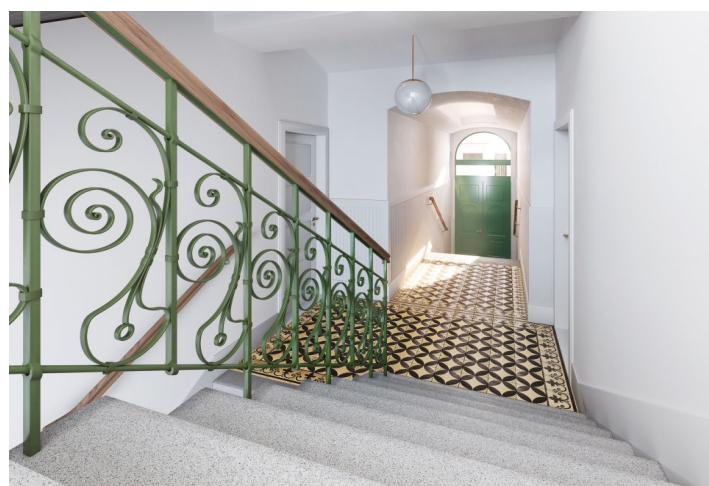
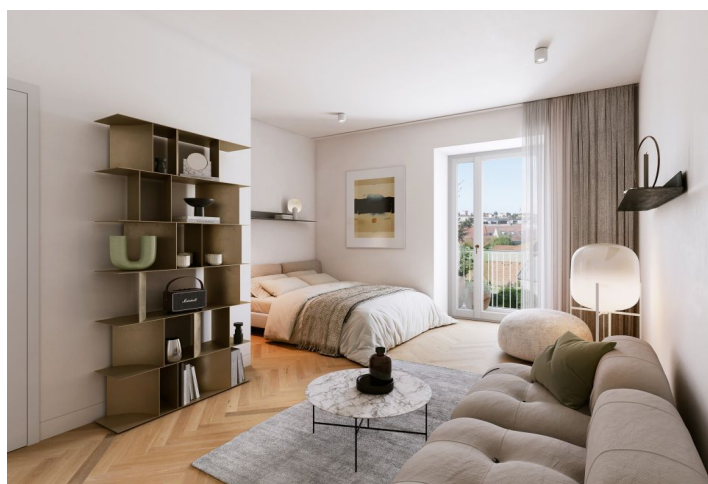




Apartment Two-bedroom (3+kk)

Sold

75.3 m², Prague 6, Břevnov, Šlikova





Apartment Two-bedroom (3+kk)

Sold

75.3 m², Prague 6, Břevnov, Šlikova

Total area	84 m²
Floor area*	75 m²
Terrace	9 m²
Parking	-
Cellar	-
PENB	E
Reference number	43821

We exclusively offer for sale this elegant, airy, high-standard apartment that is part of the Šlikova 16 boutique residence, an apartment building from the beginning of the 20th century that is currently being completely reconstructed. It is located on a side street in a beautiful part of Prague 6 in Břevnov, in the immediate vicinity of the Tejnka historical monument zone and within walking distance of Prague Castle or Petřín Hill. Expected completion date: end of 2023. The buyer pays 10% of the purchase price after signing a future purchase contract, and the remaining 90% is due after the approval of the apartment.

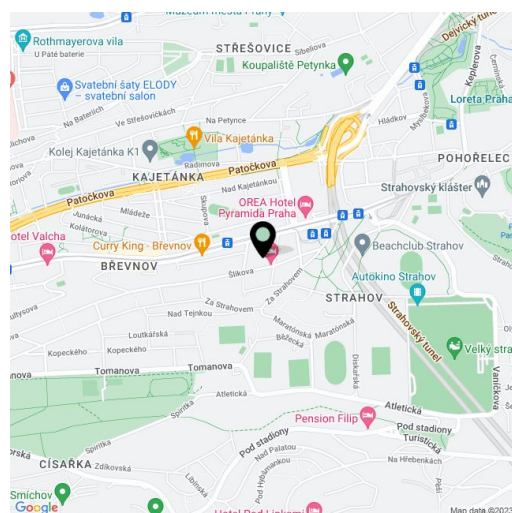
The area of the apartment on the 2nd floor consists of a living room with a preparation for a kitchen, two bedrooms, a bathroom (with a bathtub and toilet), a separate toilet and a foyer. The living room has access to the terrace facing a quiet courtyard.

The **high-standard** facilities include herringbone pattern **oak parquet floors**, designer **WOW hexagon tiles**, brand-name sanitary ware, security wooden panel entrance doors, double-wing panel interior doors to the living room, and full rebateless doors to the bedroom and bathroom, all with **brass handles** and **magnetic locks**. Windows are wooden with insulated triple-glazed panes, and the surface of the terrace is made of **larch wood**. The building with elegant common areas has a modern elevator and a **refurbished stone staircase**, while a video intercom contributes to comfort and safety. The apartment comes with a **storage room** on the mezzanine.

This great location in Prague 6 is easily accessible by public transport and by car. There are plenty of cafes and restaurants, a supermarket and farm produce shops are in the immediate vicinity, and numerous sports fields are within easy reach. **Ladronka Park**, **Velká Strahovská Garden**, the **Petřín Gardens**, or the **Hvězda game reserve** are all nearby. The ride to the city center takes about 15 minutes by tram from the nearby stop, it's possible to reach the Hradčanská metro station in less than 10 minutes, and you can quickly reach the airport by car as well as drive through a tunnel complex or exit the metropolis via the Prague Ring Road.

Floor area 75.3 m², terrace 8.6 m², storage room 1.5 m².

For more information, please visit the project website www.slikova16.cz.



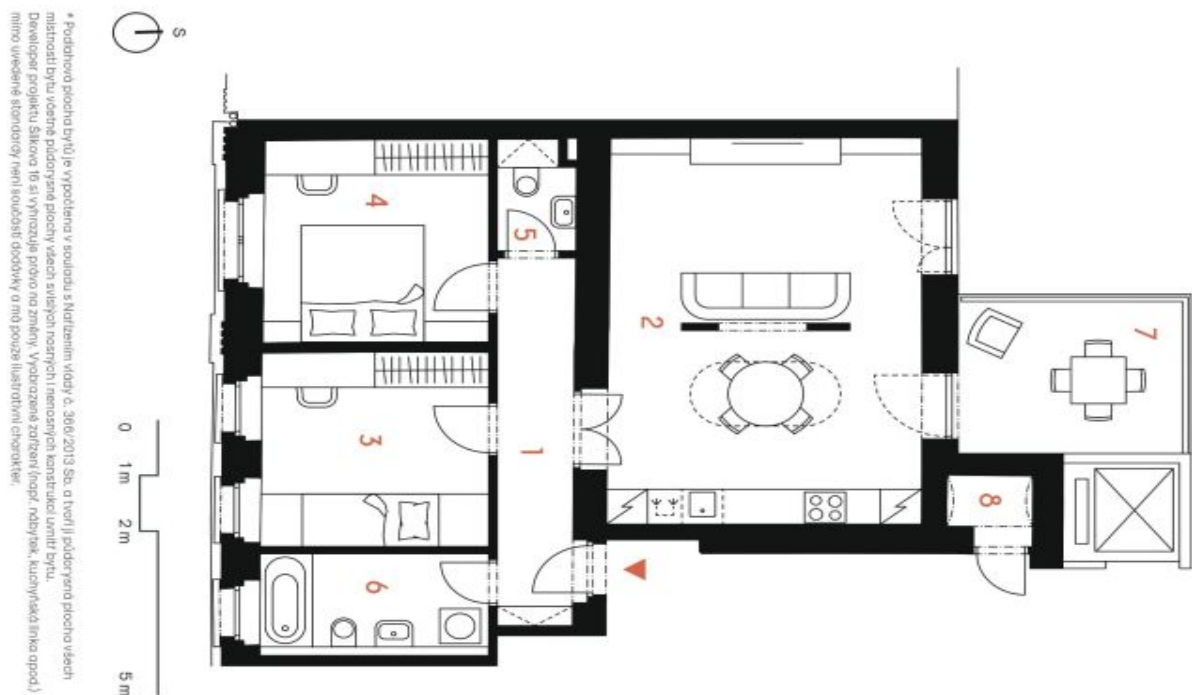
* Area of the unit according to the Civil Code. The area consists of the sum total area of the entire unit bounded by perimeter walls.



Apartment Two-bedroom (3+kk)

Sold

75.3 m², Prague 6, Břevnov, Šlikova



ŠLIKOVÁ 16

Byt č. 7

3+kk | 3. NP

1	Chodba	7,3 m²
2	Obývací pokoj s kuchyní	32,0 m²
3	Pokoj	11,2 m²
4	Pokoj	11,6 m²
5	WC	2,1 m²
6	Koupelna s WC	6,0 m²

Užitná plocha	70,2 m²
Podlahová plocha*	75,3 m²

7	Terasa	8,6 m ²
8	Komora	1,5 m ²
Celková plocha		85,4 m ²

EXKLUZIVNÍ ZASTOUPENÍ
svoboda&williams | CHRISTIE'S
INTERNATIONAL REAL ESTATE

Na Perštýně 2, 110 00, Praha 1
+420 724 551 238
slikova16.cz info@slikova16.cz