



Apartment One-bedroom (2+kk)

Sold

46.6 m², Prague 6, Břevnov, Šlikova





Apartment One-bedroom (2+kk)

Sold46.6 m², Prague 6, Břevnov, Šlikova

Total area	50 m ²
Floor area*	47 m ²
Terrace	4 m ²
Parking	-
Cellar	-
PENB	E
Reference number	43818

We exclusively offer for sale this elegant, airy, high-standard apartment that is part of the Šlikova 16 boutique residence, an apartment building from the beginning of the 20th century that has currently been completely reconstructed. It is located on a side street in a beautiful part of Prague 6 in Břevnov, in the immediate vicinity of the Tejnka historical monument zone and within walking distance of Prague Castle or Petřín Hill.

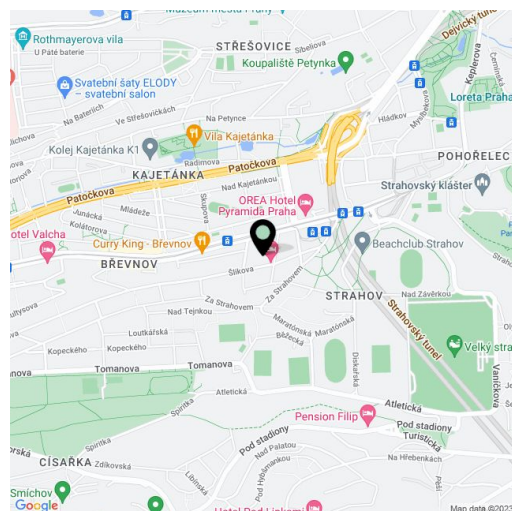
The area of the apartment on the ground floor consists of a living room with a preparation for a kitchen, a bedroom, a bathroom (with a shower and toilet), a laundry room, and a foyer. The living room has access to the terrace facing a quiet courtyard.

The high-standard facilities include herringbone pattern oak parquet floors, designer WOW hexagon tiles, brand-name sanitary ware, security wooden panel entrance doors, double-wing panel interior doors to the living room, and full rebateless doors to the bedroom and bathroom, all with brass handles and magnetic locks. Windows are wooden with insulated triple-glazed panes, and the surface of the terrace is made of larch wood. The building with elegant common areas has a modern elevator and a refurbished stone staircase, while a video intercom contributes to comfort and safety.

This great location in Prague 6 is easily accessible by public transport and by car. There are plenty of cafes and restaurants, a supermarket and farm produce shops are in the immediate vicinity, and numerous sports fields are within easy reach. Ladronka Park, Velká Strahovská Garden, the Petřín Gardens, or the Hvězda game reserve are all nearby. The ride to the city center takes about 15 minutes by tram from the nearby stop, it's possible to reach the Hradčanská metro station in less than 10 minutes, and you can quickly reach the airport by car as well as drive through a tunnel complex or exit the metropolis via the Prague Ring Road.

Floor area 46.6 m², terrace 3.8 m².

For more information, please visit the project website www.slikova16.cz.



* Area of the unit according to the Civil Code. The area consists of the sum total area of the entire unit bounded by perimeter walls.

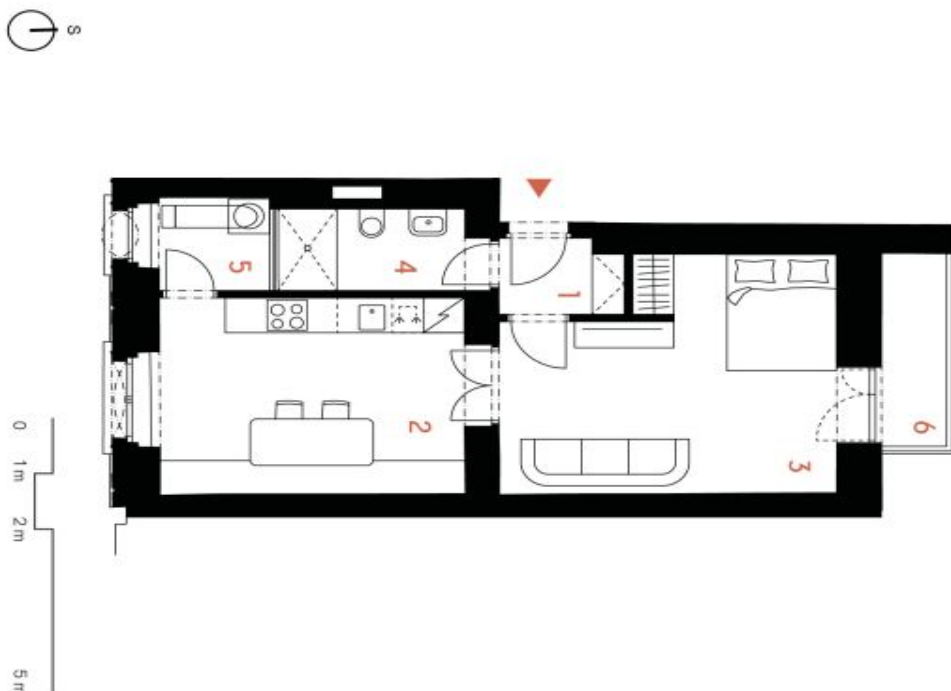


Apartment One-bedroom (2+kk)

Sold

46.6 m², Prague 6, Břevnov, Šlikova

* Podlahová plocha bytu je vypočítána v souladu s Nariadením vlády č. 396/2013 Sb. a tvoří ji podlahová plocha všech místností bytu včetně podlahové plochy všech vstupních a výstupních prostorů včetně vstupu. Dávající projekt Šlikova 16 je vyhrazen pro výstavbu a není závazný. Vybavení zařízení (např. nábytek, kuchyňská linka apod.) může být podle standardů nebo podle dohody a má pouze ilustrativní charakter.



ŠLIKOVÁ 16

Byt č. 4

2+kk | 1. NP

1	Chodba	2,3 m²
2	Kuchyň s jídelnou	15,6 m²
3	Pokoje	18,7 m²
4	Koupelna s WC	4,3 m²
5	Prádelna	2,6 m²

Užitná plocha 43,5 m²

Podlahová plocha* 46,6 m²

6 Terasa 3,8 m²

Celková plocha 50,4 m²

EXKLUZIVNÍ ZASTOUPENÍ
svoboda&williams | CHRISTIE'S
INTERNATIONAL REAL ESTATE

Na Zátorce 1, 160 00, Praha 6
+420 724 551 238
slikova16.cz info@slikova16.cz