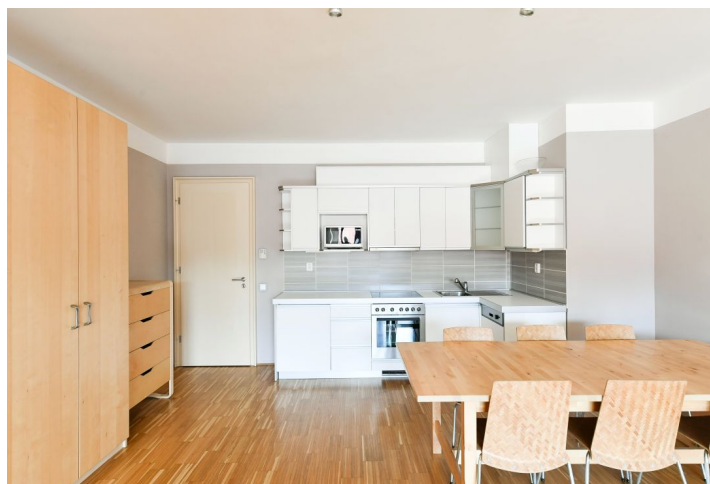




Apartment Studio (1+kk)

55.5 m², Prague 8, Karlín, Rohanské nábřeží

Rented





Apartment Studio (1+kk)

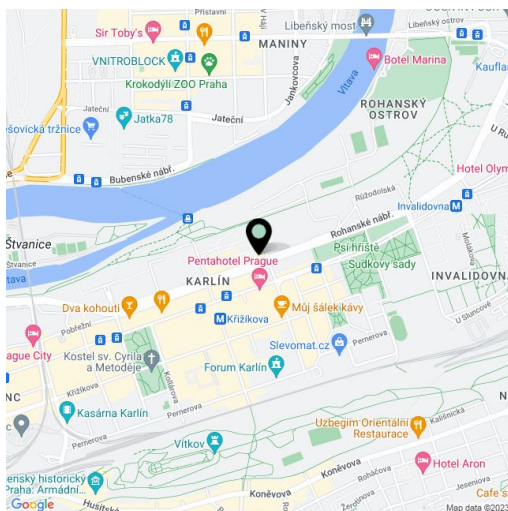
Rented55.5 m², Prague 8, Karlín, Rohanské nábřeží

Total area	56 m ²
Parking	-
Cellar	Yes
PENB	C
Reference number	43805
Available from	Immediately

This semi-furnished studio apartment with views of Vítkov Hill is on the sixth floor of the River Diamond Residence with a 24/7 reception and manned security, underground garage parking, and a charming private Japanese style courtyard garden with water features. Located in a highly sought-after part of Karlín with excellent transport accessibility to the city center on the Vltava riverbank with a bike and jogging path, near a ferry that crosses the river and a golf course. The Křižíkova metro station (line B) and tram stop, plus rich amenities incl. restaurants, bistros, shops, a cinema, and other services are all within a few minutes' walk. The building features quality facilities and finishes—the residence was awarded the Building of the Year title in 2007.

The apartment has a living room/bedroom with a fully fitted open plan kitchen, a dining area, and large wardrobes, a bathroom including a bathtub and a toilet, and an entrance hall.

Hardwood floors, tiles, washing machine, dishwasher, **cellar**, elevator, chip entry. Building amenities include guest parking, on-site property management and on-site maintenance. Monthly deposit for service charges, water, and heating: CZK 4,000. Electricity is billed separately.



* Area of the unit according to the Civil Code. The area consists of the sum total area of the entire unit bounded by perimeter walls.