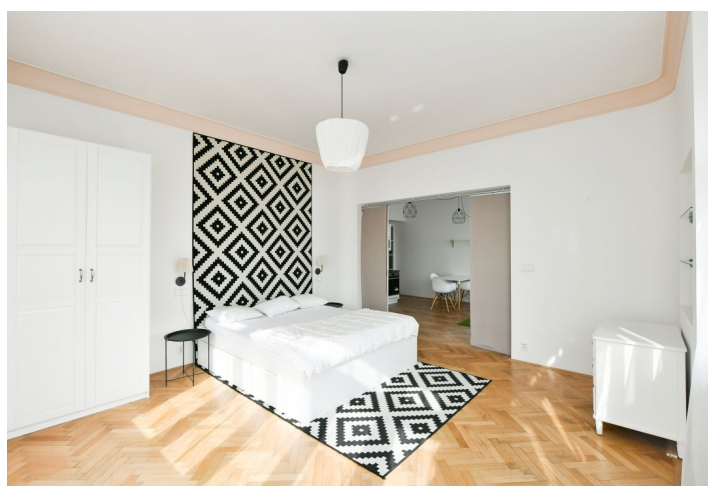
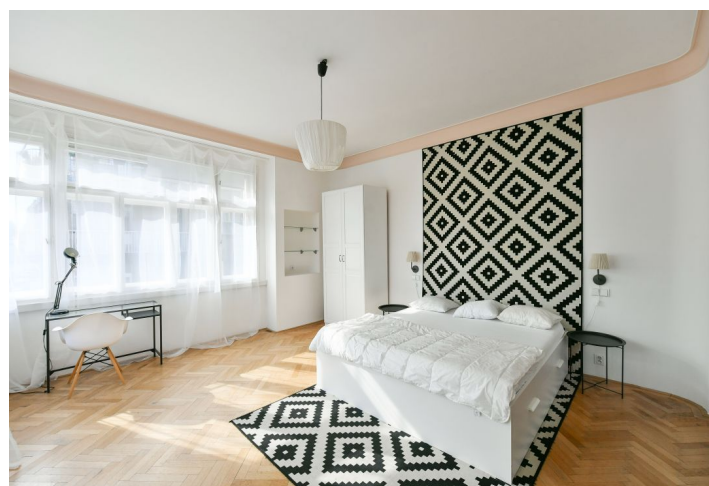
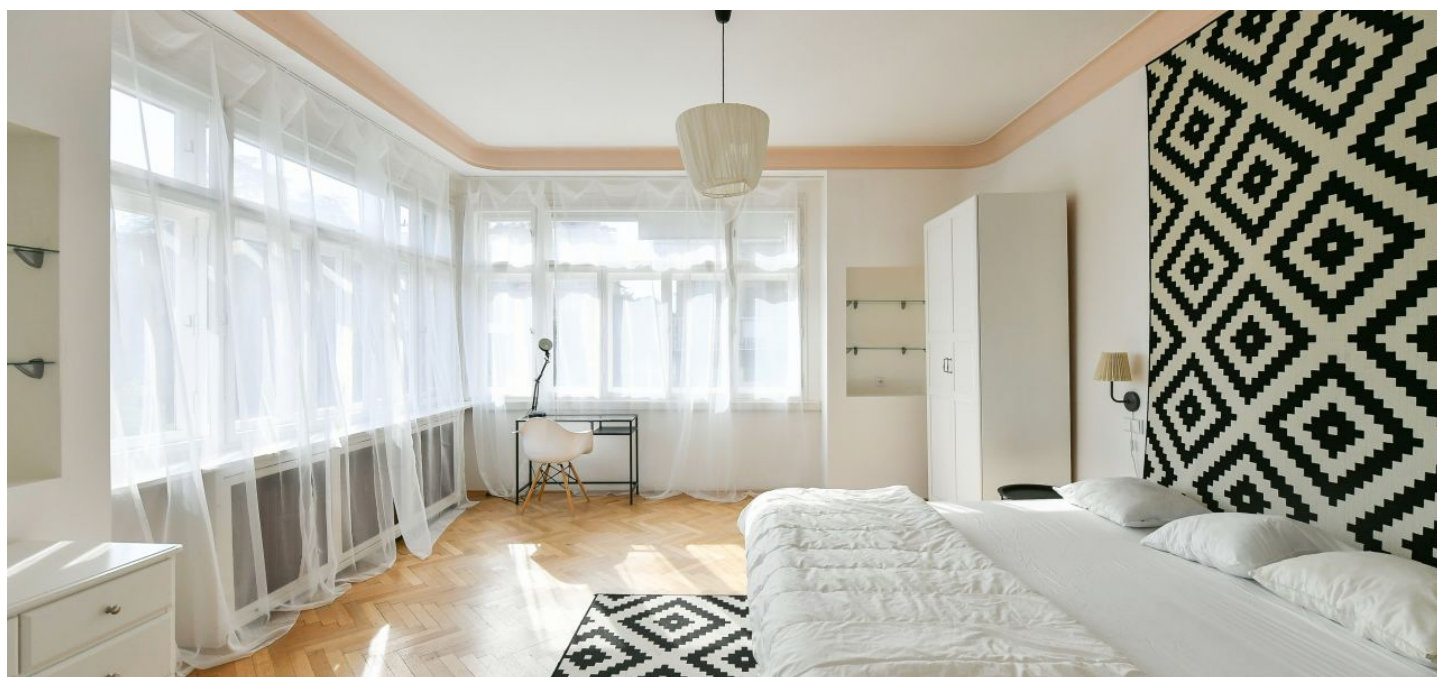




Apartment One-bedroom (2+kk)

Rented

57 m², Prague 7, Holešovice, Kostelní





Apartment One-bedroom (2+kk)

Rented

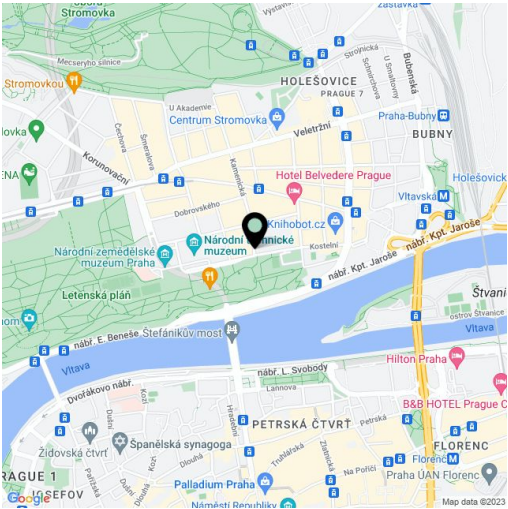
57 m², Prague 7, Holešovice, Kostelní

Total area	57 m²
Parking	-
Cellar	-
Service price	Monthly deposit for services, water, and heating: CZK 4,500. Electricity - transferred to the tenant.
PENB	D
Reference number	43722
Available from	Immediately

This bright, fully furnished apartment is situated on the 3rd floor of a well-maintained Functionalist building with an elevator, right next to Letná Park. A popular location with full amenities and services and very quick access to the city center, just moments from a tram stop and the Vltavská metro station. The city center can also be reached on foot (15 min.). Conveniently located for the airport and international schools.

The interior includes a living room with a fully fitted open plan kitchen, a bedroom, a small shower room, a separate toilet, and an entrance hall with a built-in wardrobe. The apartment windows face the street.

Hardwood floors, tiles, security entry door, central heating, washing machine, dishwasher, microwave oven.



* Size of the unit according to the Housing Act.
The area consists of the sum total of the internal area of every room.