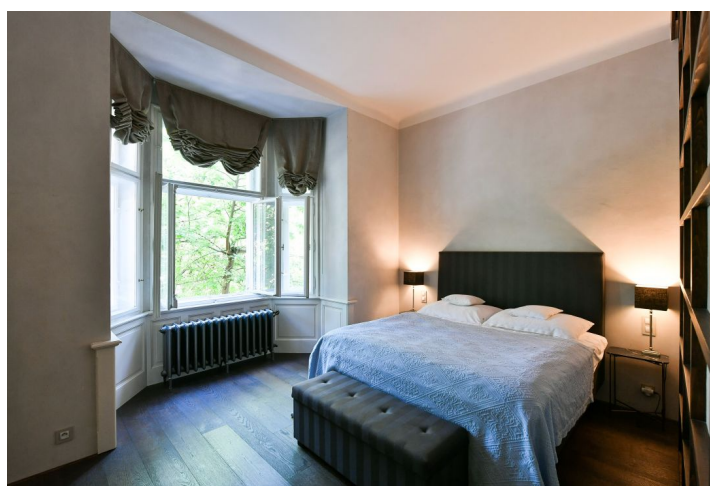
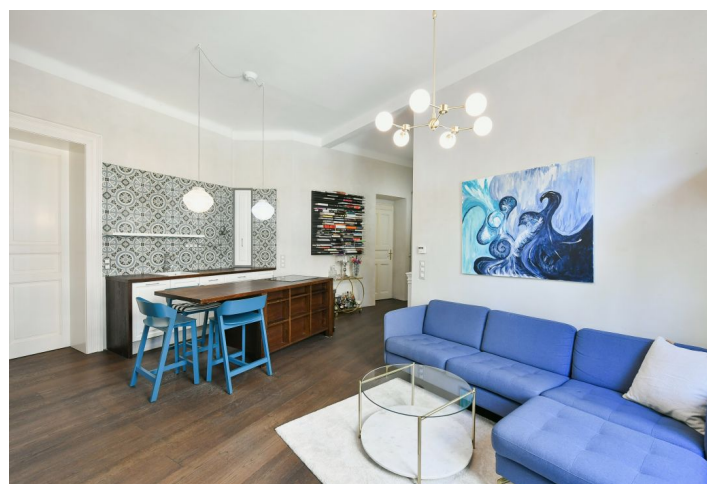
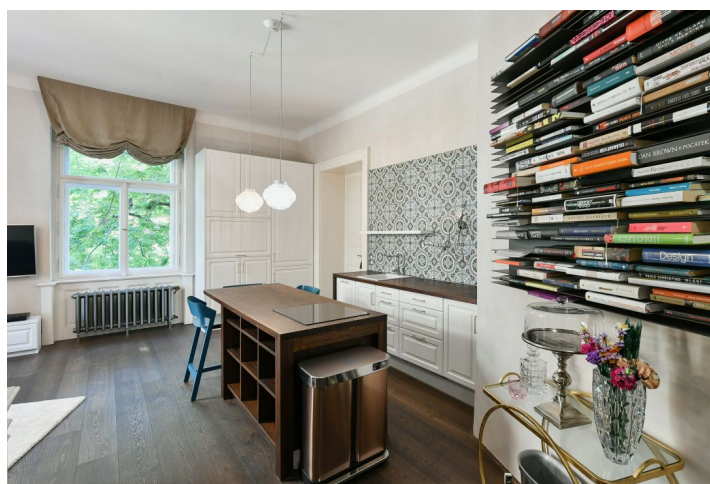




## Apartment Two-bedroom (3+kk)

78 m², Prague 2, Vinohrady, Na Kozačce

Rented





## Apartment Two-bedroom (3+kk)

Rented

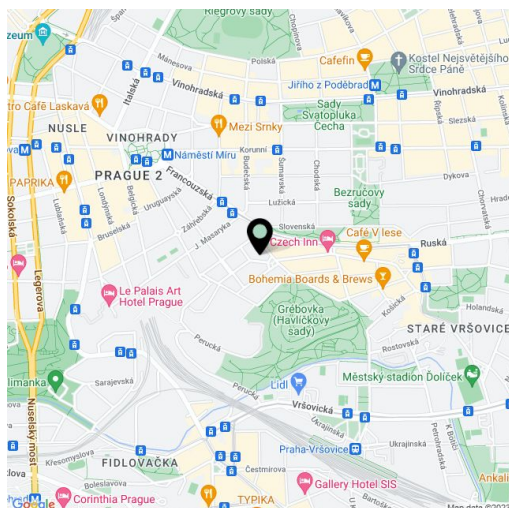
78 m², Prague 2, Vinohrady, Na Kozačce

Total area	78 m²
Parking	-
Cellar	-
Service price	Monthly deposit for common building charges and water: CZK 2,500. Gas and electricity are billed separately.
PENB	E
Reference number	43371
Available from	Immediately

Benefiting from close proximity to the wonderful Havlíčkovy Sady Park (just a block away), this fully furnished apartment is on the first floor of a renovated residential building with an elevator. Nicely located on a quiet street in a highly sought-after Vinohrady residential neighborhood, with very quick connections to the city center and amenities. Conveniently located for the Náměstí Míru metro station (line A), and multiple tram lines.

The interior includes a living room with a fully fitted open plan kitchen and a dining area, a master bedroom with a fitted **walk-in closet**, a second bedroom (or a study), a bathroom with a bathtub and toilet, and an entrance hall.

Preserved original details, **hardwood floors**, tiles, high ceilings (3.6 m), large refurbished casement windows and wooden paneling, gas boiler, heated bathroom floor, washing machine, dryer, dishwasher, induction cooktop, TV, bike storage in the building.



\* Size of the unit according to the Housing Act.  
The area consists of the sum total of the internal area of every room.