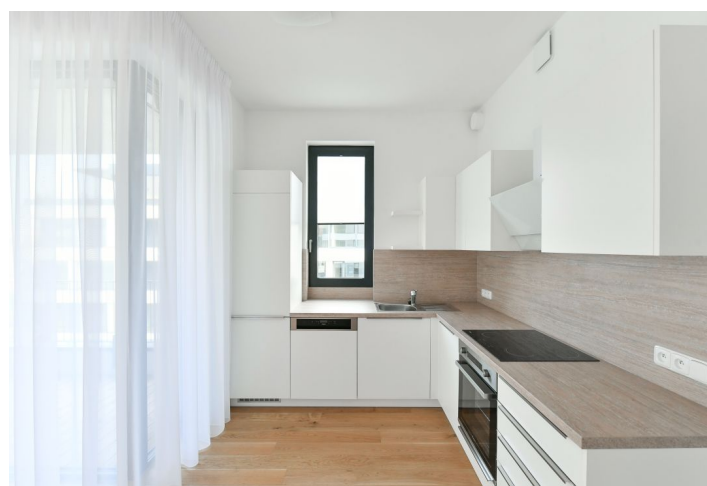
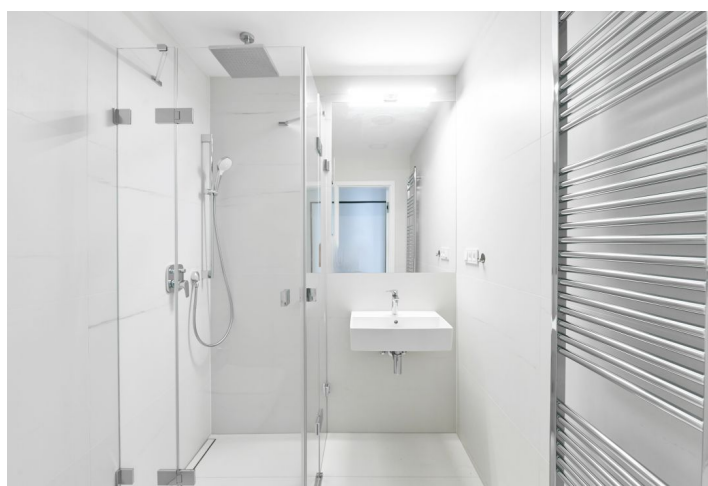




## Apartment One-bedroom (2+kk)

Rented

56.7 m², Prague 6, Střešovice, Na Dračkách





## Apartment One-bedroom (2+kk)

Rented

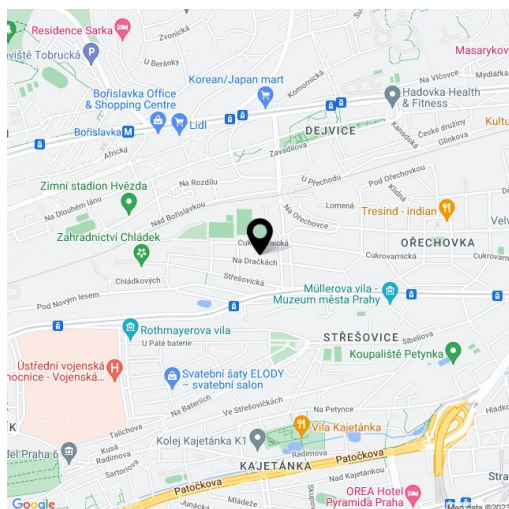
56.7 m², Prague 6, Střešovice, Na Dračkách

Total area	62 m²
Floor area*	57 m²
Balcony	6 m²
Parking	Garage parking included in the price.
Garage	Yes
Cellar	Yes
PENB	B
Reference number	43171
Available from	Immediately

This brand new high standard 1-bedroom apartment with an enclosed balcony, green views, and garage parking is situated on the 2nd floor of a high quality contemporary residential complex with a 24/7 reception, designed by the QARTA Architektura studio. Set in a premium location in the Ořechovka residential neighborhood in Prague 6, on the border of Střešovice and Dejvice, with plenty of greenery and within easy reach of amenities, international schools (The Riverside School Junior High and the ISP International School of Prague), and the airport. The project won the Real Estate Project of 2020 award in the category Best Project in the Czech Republic.

The interior of this corner apartment features a living room with a fully fitted open plan kitchen, dining area, and access to an **enclosed balcony**, a bedroom with a built-in wardrobe, a bathroom with a walk-in shower and a toilet, a utility room, and an equipped entrance hall.

High standard equipment and finishes, **heat recovery ventilation system**, **hardwood floors**, large-format tiles, security entry door, automatic exterior blinds, curtains, dishwasher, built-in wardrobe, video entry phone, **cellar**, pram and bike storage, security cameras. A **garage parking** space is included. Monthly deposit for common building charges and water approx. CZK 6,000/month. Electricity will be transferred to the tenant.



\* Area of the unit according to the Civil Code. The area consists of the sum total area of the entire unit bounded by perimeter walls.