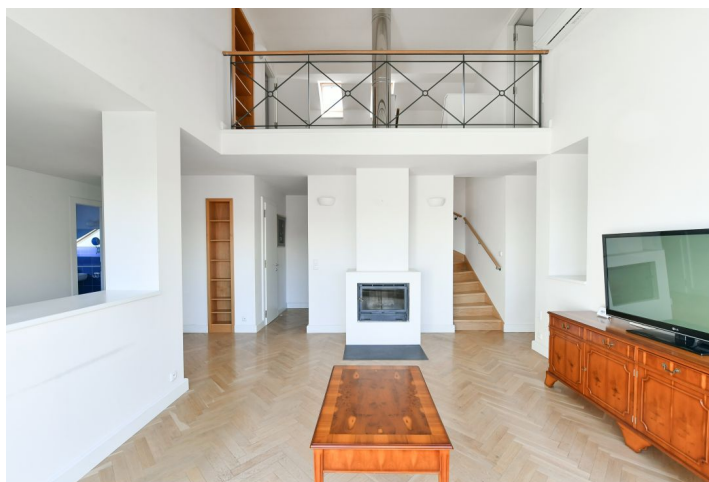
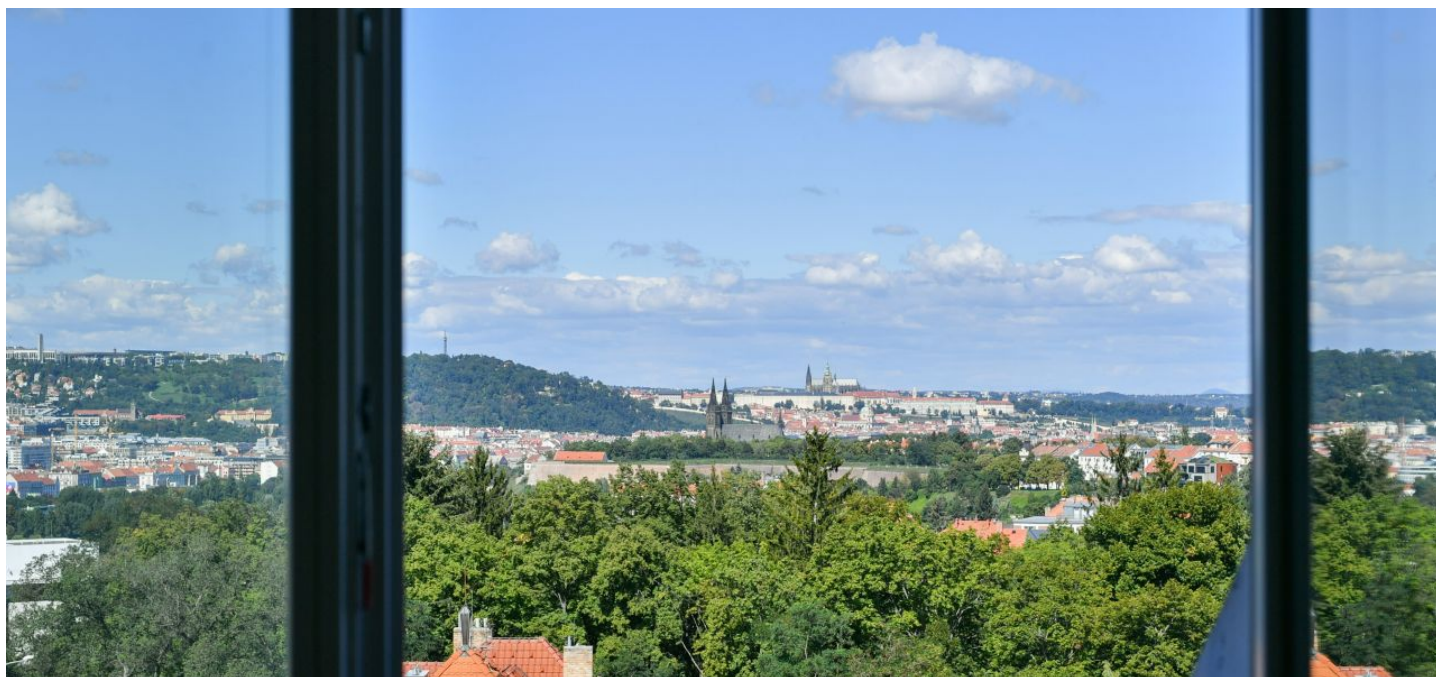




Apartment Three-bedroom (4+1)

Rented

170 m², Prague 4, Podolí, Na Klaudiánc





Apartment Three-bedroom (4+1)

Rented

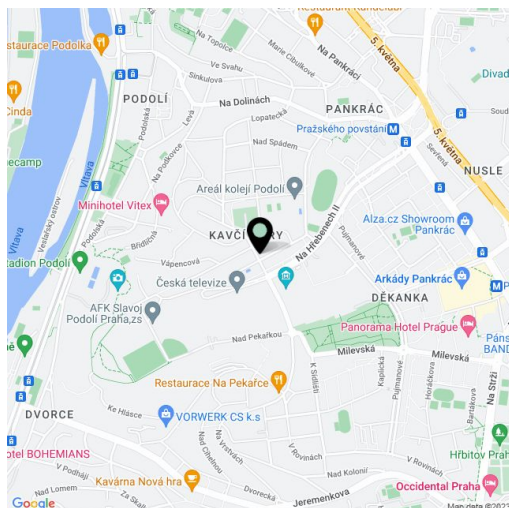
170 m², Prague 4, Podolí, Na Klaudiánc

Total area	180 m ²
Floor area*	170 m ²
Terrace	10 m ²
Parking	Parking is available.
Cellar	Yes
PENB	G
Reference number	43111
Available from	Immediately

This semi furnished 3-bedroom 2-bathroom split-level attic apartment with a terrace and beautiful views of the Prague Castle and Petřín Hill is situated on the 4th floor of a residential building with parking and no elevator, in a quiet neighborhood right next to the Czech TV grounds, with two parks in the immediate vicinity, about a five min. walk from the Pražského povstání metro station (line C). Conveniently located for full amenities and services, the Pankrác business center, and the Prague 4 international schools.

The lower floor of the apartment features a living room with a **fireplace**, a dining area, and access to the **terrace**, a fully fitted kitchen, a bedroom with a fitted **walk-in closet**, a bedroom with built-in wardrobes and a **walk-in closet**, a bathroom (walk-in shower, toilet), and a second bathroom (bathtub, bidet, toilet). There is a laundry room, a utility room, a storage room, and an entrance hall. The upper floor includes an open **gallery**, a bedroom with a **walk-in closet**, and a utility room.

Air-conditioning, hardwood floors, tiles, gas boiler, Miele washer and dryer, dishwasher, central vacuum cleaner, TV, alarm, **cellar**. **Parking** is available behind the building. Monthly deposit for service charges and water CZK 3,000. Utilities are billed separately.



* Area of the unit according to the Civil Code. The area consists of the sum total area of the entire unit bounded by perimeter walls.