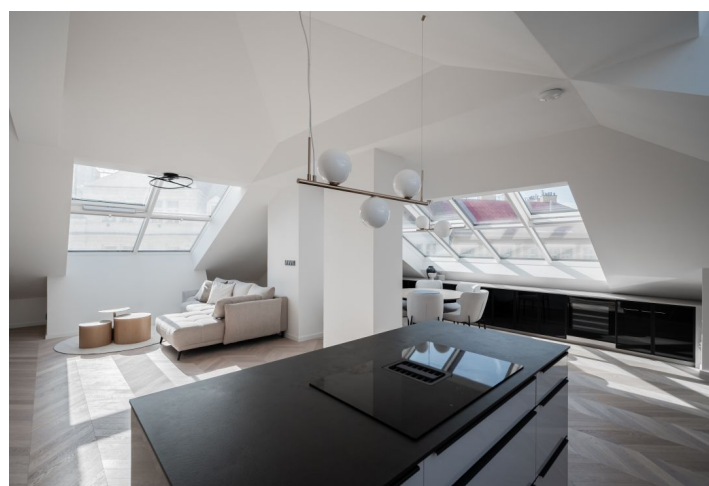
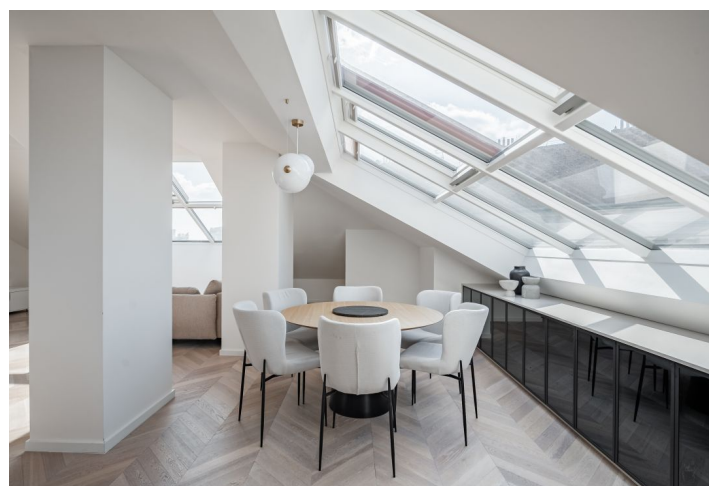




Apartment Three-bedroom (4+kk)

Rented

119.7 m², Prague 2, Vinohrady, Šafaříkova





Apartment Three-bedroom (4+kk)

Rented

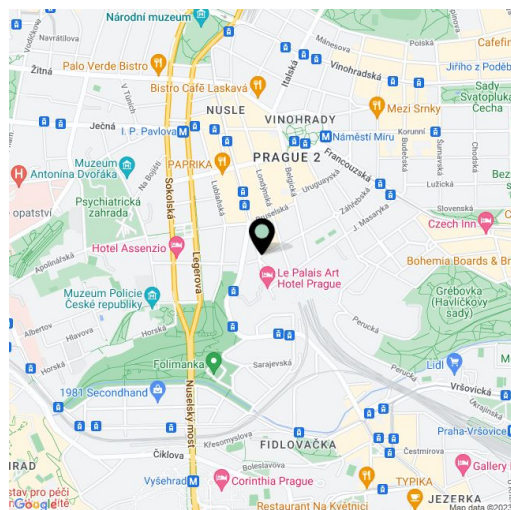
119.7 m², Prague 2, Vinohrady, Šafaříkova

Total area	120 m²
Parking	Courtyard parking.
Cellar	Yes
Service price	Monthly deposit for service charges, water, and heating: CZK 12,288. Electricity will be transferred to the tenant.
PENB	G
Reference number	43042
Available from	Immediately

This top standard designer apartment for rent in Vinohrady boasting a unique functional glass clock offering views of the National Museum is completely furnished. Located in the attic on the third floor of a fully refurbished 1885 corner residential building (the contemporary award-winning project The Clock Palace Prague), this 3-bedroom 2-bathroom split-level apartment is located in a popular residential part of Královské Vinohrady (the Royal Vineyards) with a wide range of shops, cafes, bistros, and restaurants. A convenient location only a short walk from the Náměstí Míru and I.P. Pavlova metro stations and trams, about a 20-min. walk to the city center and Wenceslas Square. Within easy reach of the Havlíčkovy sady and Folimanka parks.

The lower level of the apartment features a master bedroom with an en-suite bathroom (walk-in shower, toilet), two bedrooms, a family bathroom (walk-in shower, toilet), a storage room, and an entrance hall. The upper floor includes a spacious living room with a **fireplace**, dining area, and fully fitted open plan kitchen, plus a toilet.

Air-conditioning, top quality materials and finishes, hardwood parquet floors, security entry door, central heating, washer/dryer, dishwasher, induction cooktop, microwave oven, wine fridge, video entry phone, elevator. A **cellar** and a **courtyard parking** space are available (plus a charging station for electric cars).



* Area of the unit according to the Civil Code. The area consists of the sum total area of the entire unit bounded by perimeter walls.