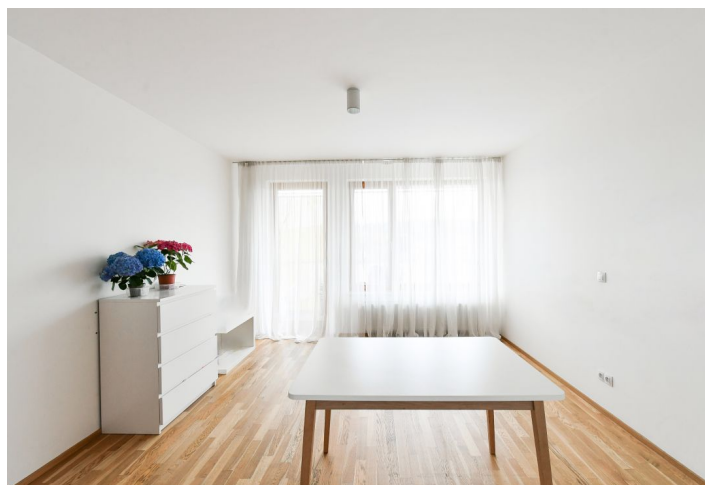
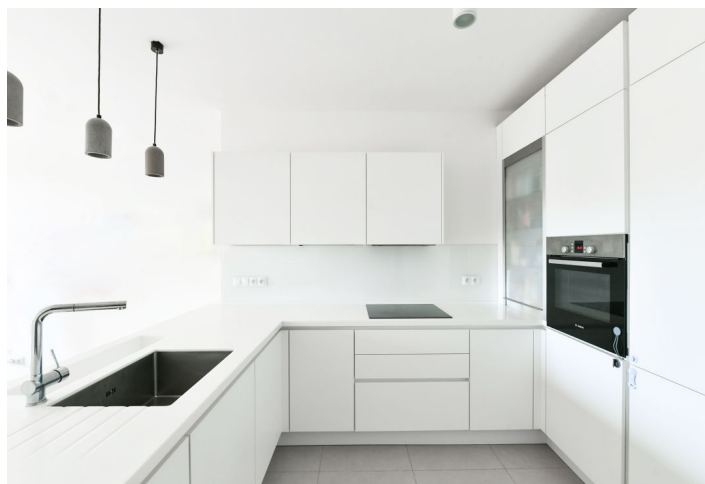
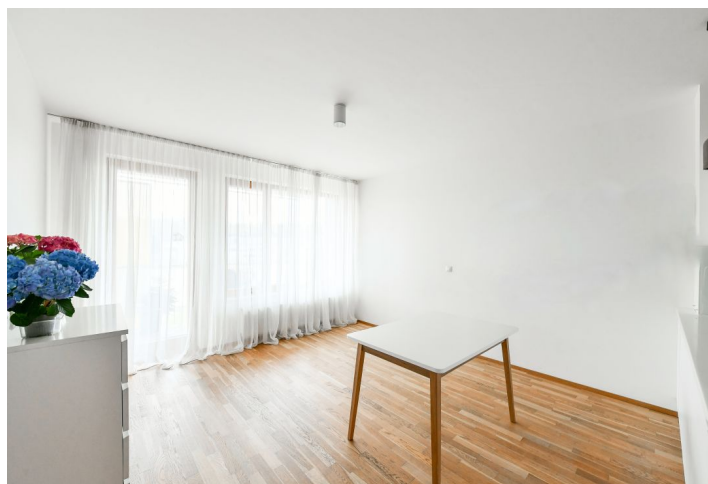




Apartment Two-bedroom (3+kk)

Rented

82.85 m², Prague 5, Jinonice, Na Vysoké I





Apartment Two-bedroom (3+kk)

Rented

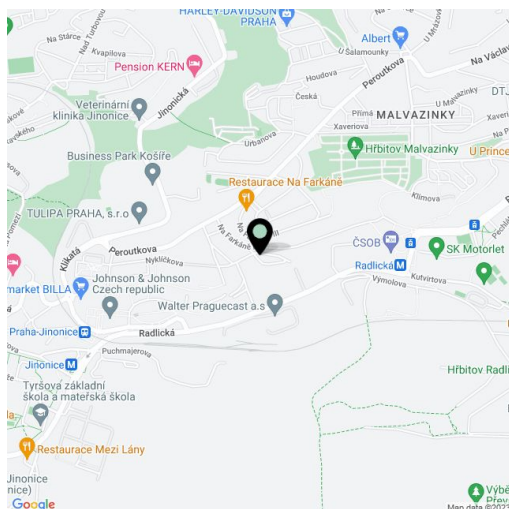
82.85 m², Prague 5, Jinonice, Na Vysoké I

Total area	92 m²
Floor area*	83 m²
Terrace	9 m²
Parking	Garage parking.
Garage	Yes
Cellar	Yes
PENB	B
Reference number	42393
Available from	Immediately

Benefiting from a terrace, this 2-bedroom apartment on the second floor of the Na Farkáně residential project with elevators and underground parking is located in a quiet green neighborhood near Na Farkáně Park and the Waltrovka project, with quick access to the French and German international schools, and the Anděl/Nový Smíchov business district. Very good access to the city center; the closest metro stations are Radlická and Jinonice.

The interior features a living room with a fully fitted open plan kitchen and **terrace** access, two bedrooms, a bathroom including a bathtub, a toilet, and underfloor heating, a storage room, an additional separate toilet, and an entrance hall with built-in wardrobes.

Hardwood parquet floors, tiles, built-in wardrobes, security entry door, central heating, dishwasher, induction cooktop, video entry phone, **cellar**. A **garage parking** space is included. Monthly deposit for service charges, water, and heating: CZK 4,000. Electricity is billed separately. Available from July 2022.



* Area of the unit according to the Civil Code. The area consists of the sum total area of the entire unit bounded by perimeter walls.