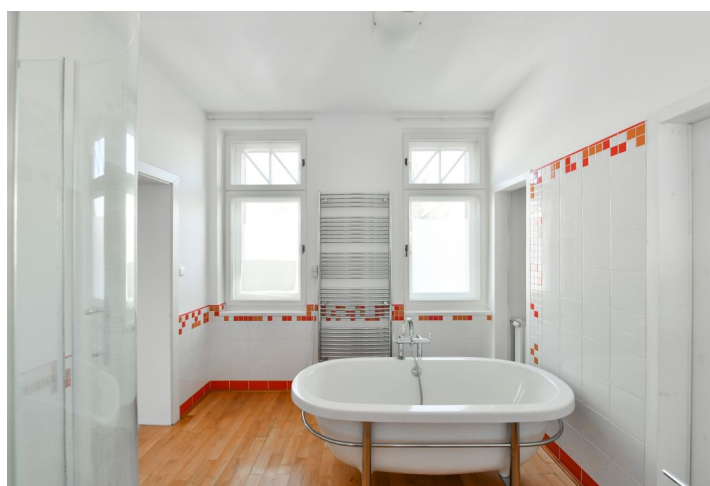
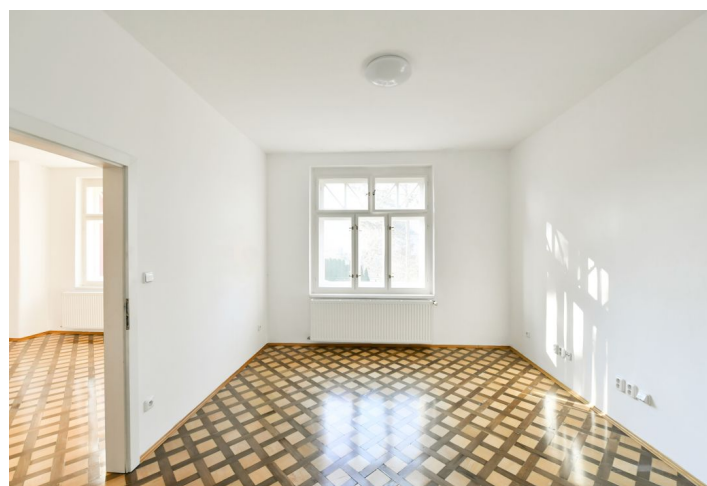
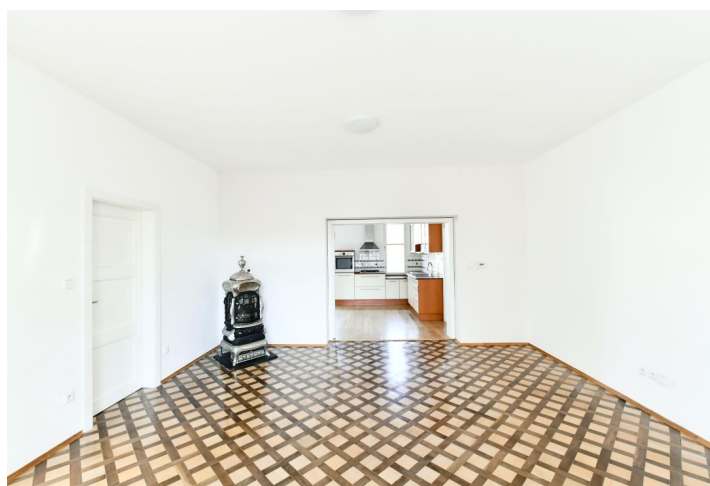




Apartment Two-bedroom (3+1)

107 m², Prague 6, Střešovice, Lomená

Rented





Apartment Two-bedroom (3+1)

Rented

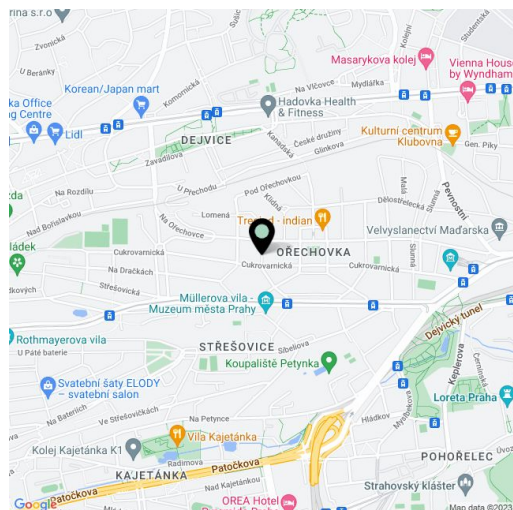
107 m², Prague 6, Střešovice, Lomená

Total area	107 m²
Parking	-
Cellar	Yes
Service price	Monthly deposit for service charges and water: approx. CZK 1,000. Gas and electricity are billed separately (transfer to the tenant).
PENB	G
Reference number	41840
Available from	Immediately

This is a 2-bedroom apartment on the first floor of a renovated villa with a shared garden in a quiet cul-de-sac in a prestigious Prague 6 neighborhood, near the Prague Castle. Wonderful location with grand homes and lots of greenery, just minutes from a tram and bus stop, a few stops from Dejvická and Hradčanská metro stations with full amenities in the area, within easy reach of the airport and international schools.

The interior features a living room, a fully fitted kitchen separated by sliding doors, two bedrooms, a bathroom including both a bathtub and a walk-in shower, a separate toilet with a bidet, a utility room, plus an entrance hall with a built-in wardrobe.

Garden views, **solid wood parquet floors**, tiles, carpet in one bedroom, **historic stove**, gas boiler, dishwasher, **cellar**. No lift.



* Area of the unit according to the Civil Code. The area consists of the sum total area of the entire unit bounded by perimeter walls.