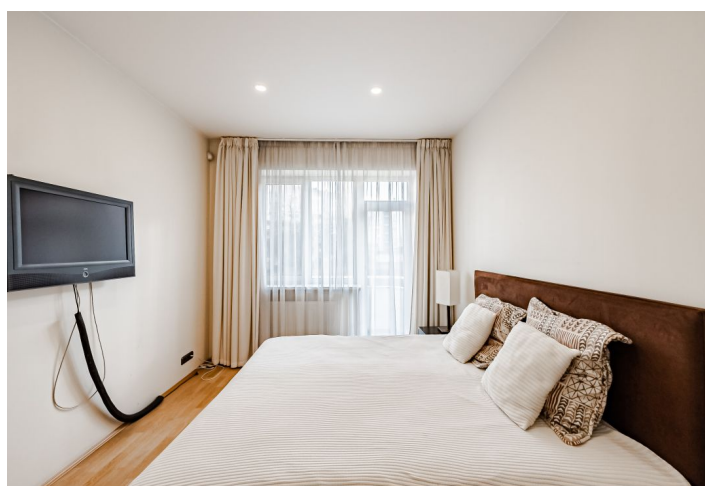




Apartment Four-bedroom (5+1)

Sold

215 m², Prague 6, Bubeneč, Verdunská





Apartment Four-bedroom (5+1)

Sold

215 m², Prague 6, Bubeneč, Verdunská

Total area	221 m²
Floor area*	215 m²
Balcony	6 m²
Parking	2 garage parking spaces
Garage	Yes
Cellar	Yes
Service price	3 131 CZK monthly
PENB	G
Reference number	41423

This incredibly spacious family 4-bedroom apartment with 2 balconies comes with 2 garage parking spaces. It is the only unit on its floor in a renovated Functionalist building from 1938 in the attractive district of Prague 6 - Bubeneč, near the Dejvická metro station.

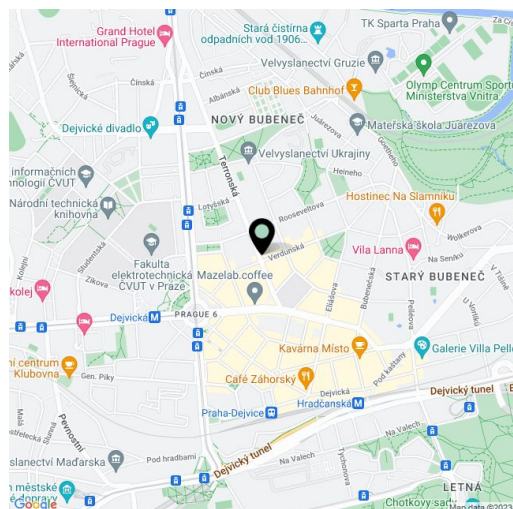
The current layout of the apartment on the 2nd floor was created by connecting two residential units. The area is divided into a living room, a separate kitchen with a dining area, 4 bedrooms, 2 bathrooms, a toilet, and a large entrance hall. All bedrooms and **both balconies** face southeast towards a **quiet courtyard** with **plenty of greenery**.

Facilities include **wooden** floors, plastic windows, a **Next security door**, and an alarm system. The building has been completely renovated, but the interior needs to be modernized. Gas heating. The purchase price includes **2 garage parking spaces**.

The house stands on a side one-way street lined with **trees**. Only a few steps away is a kindergarten and elementary school or playgrounds, and the area is full of restaurants and cafes as well as medical services and all other civic amenities. The Dejvická, Semafor, and Spejbl and Hurvínek theaters are also within walking distance. **Farmers' markets** are held nearby and you can walk to **Stromovka Park**. Thanks to the Dejvická metro station (line A) and many tram lines, the connection to the city center and to the airport is very fast. Traveling by car is quick and easy with the help of the nearby tunnel complex.

Interior 221 m², including two balconies with an area of approximately 3 m².

In addition to regular property viewings, we also offer real-time video viewings via WhatsApp, FaceTime, Messenger, Skype, and other apps.



* Area of the unit according to the Civil Code. The area consists of the sum total area of the entire unit bounded by perimeter walls.



Apartment Four-bedroom (5+1)

215 m², Prague 6, Bubeneč, Verdunská

Sold

Plánek

1. NP

1	Pokoj	17,92 m²
2	Pokoj	23,78 m²
3	Pokoj	23,78 m²
4	Pokoj	17,92 m²
5	Lazen	
6	Předsín	26,40 m²
7	Předsín	
8	Lazen	
9	Kuchyn	17,43 m²
10	Šatna	
11	Kuchyn	17,43 m²

