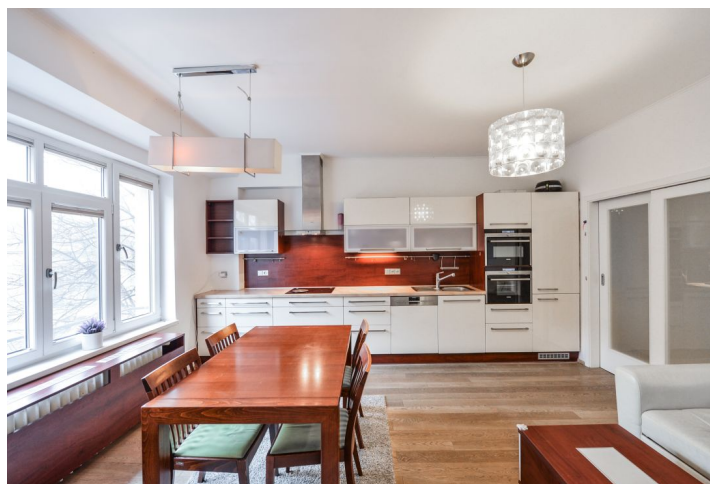




Apartment Three-bedroom (4+kk)

Sold

86 m², Prague 6, Dejvice, Generála Píky





Apartment Three-bedroom (4+kk)

Sold

86 m², Prague 6, Dejvice, Generála Píky

| | |
|------------------|-------------------|
| Total area | 91 m² |
| Floor area* | 86 m² |
| Balcony | 2 m² |
| Loggia | 3 m² |
| Parking | - |
| Cellar | - |
| Service price | 4 891 CZK monthly |
| PENB | C |
| Reference number | 41376 |

This sunny apartment with a balcony and a glazed loggia is located on the 2nd floor of a completely renovated classic apartment building with an elevator. The building is part of the elegant district of Prague 6 - Dejvice and is close to the metro station and tram stop on Vítězné Square and within walking distance of Prague Castle.

The apartment is conveniently divided into a living room with a kitchen, a study usable as a guest room or bedroom, another 2 bedrooms with **windows towards the garden** in the courtyard, a bathroom (with a bath and toilet), a separate toilet, and an entrance hall. The study has a **south-facing balcony**; one bedroom has a **glazed loggia/winter garden**.

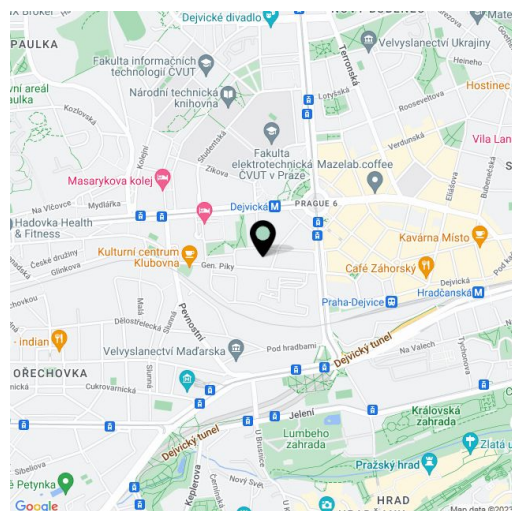
Facilities include **hardwood bleached oak floors**, quality plastic windows with interior blinds, a modern kitchen with **Siemens** appliances, built-in furniture, **Laufen and Kaldewei sanitary ware**, a **heated bathroom floor**, and cast iron radiators. Heating is remote. The apartment comes with a **cellar storage unit**. The building has been completely renovated (including electricity and gas distribution, risers, roof, insulation, etc.).

This attractive location next to the Ořechovka residential area offers a full-fledged infrastructure, which includes, for example, the international **Riverside School Prague** Junior High, university faculties, quality restaurants, cafés, and a traditional **farmers' market**. The district has convenient connections to the city center by subway, tram, and train. The drive to the airport is also fast. Within walking distance is **Prague Castle**, the **Deer Moat**, the **Royal Garden**, **Chotkovy Sady Garden**, or the new **Marie Terezie Park**.

Interior 86 m², balcony 2.4 m², loggia 2.5 m², cellar about 5 m².

The apartment is rented until the end of August 2022.

In addition to regular property viewings, we also offer real-time video viewings via WhatsApp, FaceTime, Messenger, Skype, and other apps.



* Area of the unit according to the Civil Code. The area consists of the sum total area of the entire unit bounded by perimeter walls.



Apartment Three-bedroom (4+kk)

Sold

86 m², Prague 6, Dejvice, Generála Píky



Generála Píky

| | |
|---------------|---------------------------|
| pokoj 1 | 23,4 m ² |
| pokoj 2 | 12,7 m ² |
| pokoj 3 | 11,9 m ² |
| kuchyně | 23,1 m ² |
| předstín | 11,1 m ² |
| koupelna + WC | 5,4 m ² |
| WC | 1,0 m ² |
| komora | 2,5 m ² |
| balkon | 2,3 m² |
| celkem | 91,1 m² |



měřítko : 1 : 50
c.z. 1/2016
vyhotovil: Ing. Janská Marcela v roce 2016