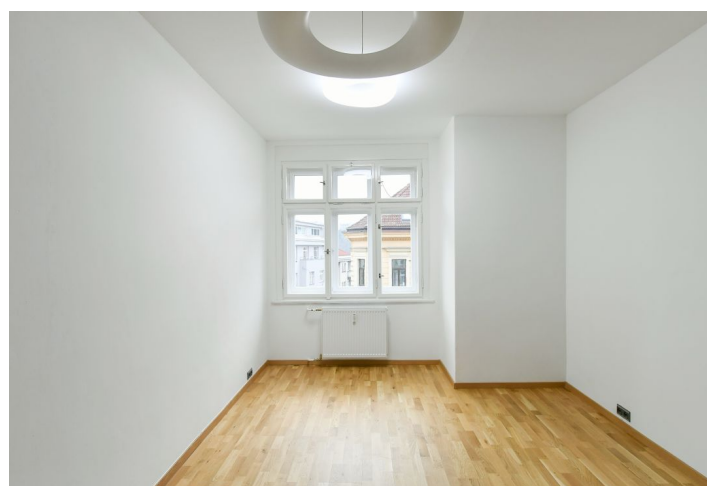




Apartment Two-bedroom (3+kk)

Rented

65 m², Prague 5, Smíchov, Holečkova





Apartment Two-bedroom (3+kk)

Rented

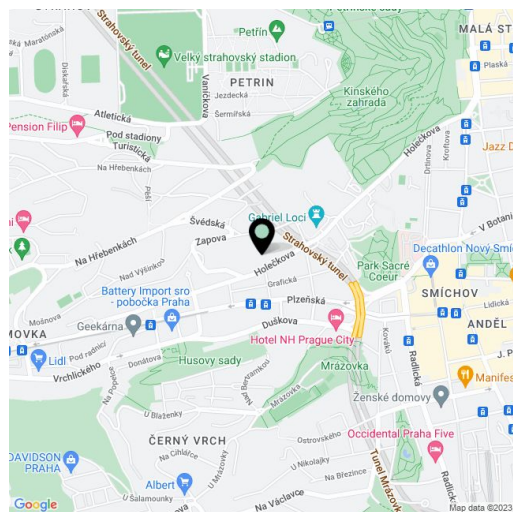
65 m², Prague 5, Smíchov, Holečkova

Total area	65 m²
Parking	-
Cellar	-
Service price	Monthly deposit for services, water, and heating: CZK 5,500. Electricity - transferred to the tenant.
PENB	G
Reference number	41243
Available from	Immediately

This unfurnished, quiet apartment is situated on the 2nd floor of a well-maintained apartment building. Its location offers full amenities and a rich social and cultural life with theaters, cinemas, and sports facilities. The building is located next to two old monasteries and the Kinský Garden, and by a short walk through the Sacré Coeur Park you can reach the Anděl metro station and the Nový Smíchov shopping center. A bus and a tram stop are moments from the building.

All rooms are accessible from the spacious entrance hall. The living room with a fully fitted open plan kitchen faces southeast and both bedrooms face northwest towards a **quiet mature garden**. One of the bedrooms has a small **closet**. The apartment has a separate toilet, and a bathroom with a bathtub.

Wooden floating floors, tiles, casement windows, **Sykora** kitchen, built-in wardrobe in the hall, central heating, washing machine, dishwasher, induction cooktop, microwave oven, **cellar**. No elevator. Available from April, maybe earlier upon agreement.



* Size of the unit according to the Housing Act.
The area consists of the sum total of the internal area of every room.