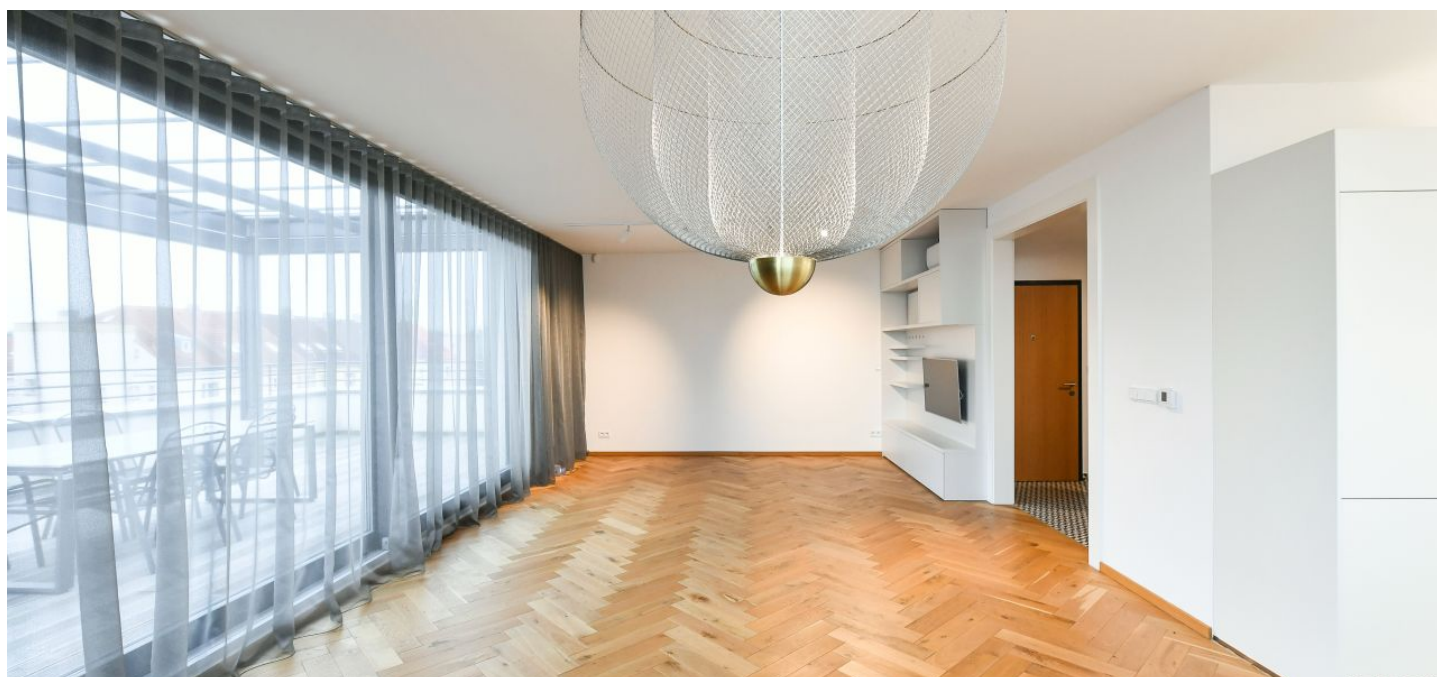




Apartment One-bedroom (2+kk)

Rented

106.9 m², Prague 5, Smíchov, Peroutkova





Apartment One-bedroom (2+kk)

Rented

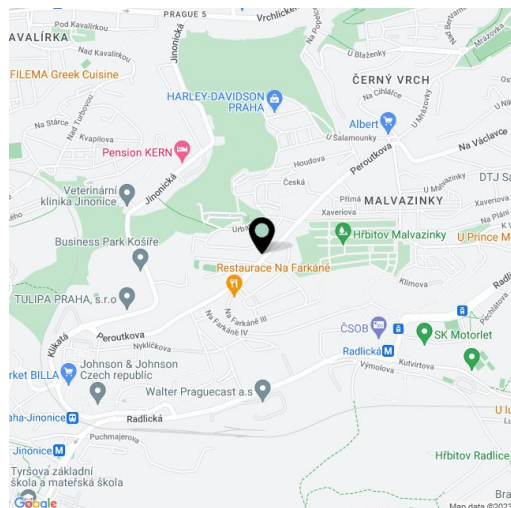
106.9 m², Prague 5, Smíchov, Peroutkova

Total area	162 m²
Floor area*	107 m²
Terrace	55 m²
Parking	Courtyard parking.
Cellar	-
PENB	C
Reference number	41234
Available from	Immediately

This is a spacious, fully refurbished, top standard 1-bedroom flat with a huge terrace and splendid views of the city, on the third floor of a renovated Functionalist style villa with beautiful common areas and parking. Located in a quiet green Prague 5 residential area, with quick access to the city center and full amenities within easy reach, a few bus stops from the Nový Smíchov / Anděl commercial and entertainment center and Anděl metro station. Conveniently located for the French School and the Nessie English Preschool, part of the Park Lane International School.

The interior features a living room with a fully fitted open plan kitchen and access to the **terrace**, and a large bedroom with a built-in wardrobe, **air-conditioning** and windows facing the garden. There is a bathroom including a free standing bathtub, a walk-in shower, a bidet and a toilet, an additional separate toilet, and an entrance hall with built-in wardrobes.

Oak floors, tiles, curtains, design lighting fixtures, Bosch kitchen appliances, dishwasher, microwave oven, TV, video entry phone. A courtyard **parking** space on the plot is included. Deposit for common building charges, water and heating CZK 4,800/month. Electricity is billed separately.



* Area of the unit according to the Civil Code. The area consists of the sum total area of the entire unit bounded by perimeter walls.