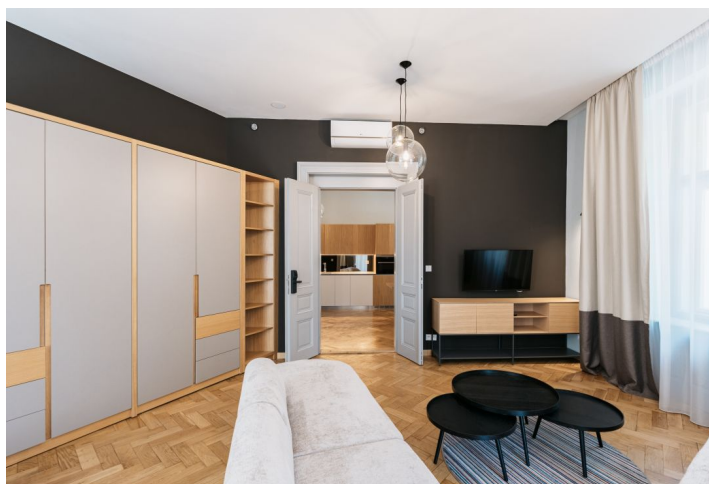




## Apartment Two-bedroom (3+1)

Rented

137.06 m², Prague 2, Vinohrady, Krkonošská





## Apartment Two-bedroom (3+1)

Rented

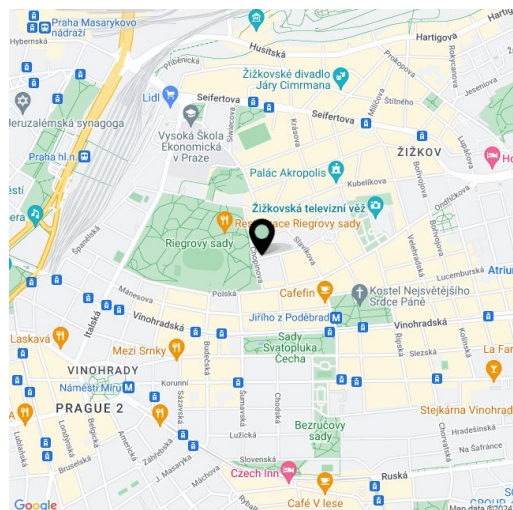
137.06 m², Prague 2, Vinohrady, Krkonošská

Total area	137 m²
Parking	-
Cellar	-
Service price	Service charges, heating, and water CZK 7,000/month for one person. Another person CZK 1,000/month. Electricity will be transferred to the tenant.
PENB	G
Reference number	41224
Available from	Immediately

Boasting a wonderful location mere steps from Riegrovy Sady Park, this refurbished, fully furnished and air-conditioned corner apartment with 4 bathrooms is suitable for shared living. Situated on the 1st floor of a renovated Art Nouveau building with an elevator and preserved original features on a quiet street in the attractive residential neighborhood of Vinohrady, with very quick access to the city center and full amenities within easy reach, just a few min. walk from the Jiřího z Poděbrad metro station, a tram stop, and a popular regular produce market.

The interior features a living room, fully fitted kitchen, 2 spacious lockable bedrooms, 4 bathrooms including a walk-in shower, 3 toilets, and an entrance hall.

Air-conditioning, Loxone smarthome system, hardwood parquet floors, tiles, built-in wardrobes and storage, central heating, underfloor heating in the bathrooms, washer, dishwasher, induction cooktop, TV, high-speed Internet, shared laundry room in the building.



\* Area of the unit according to the Civil Code. The area consists of the sum total area of the entire unit bounded by perimeter walls.