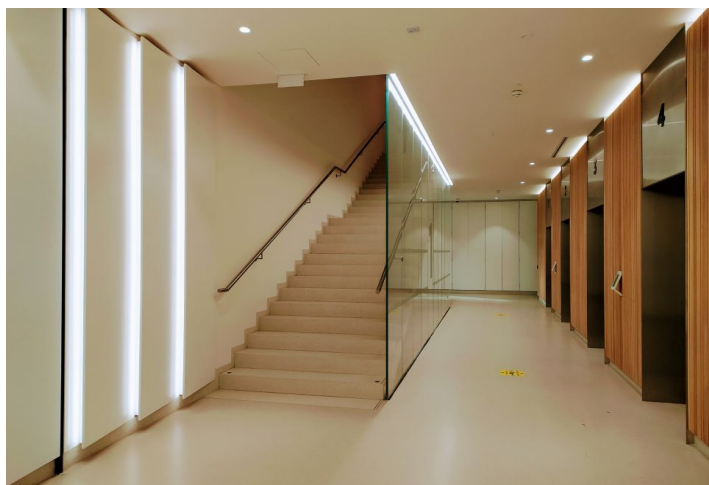
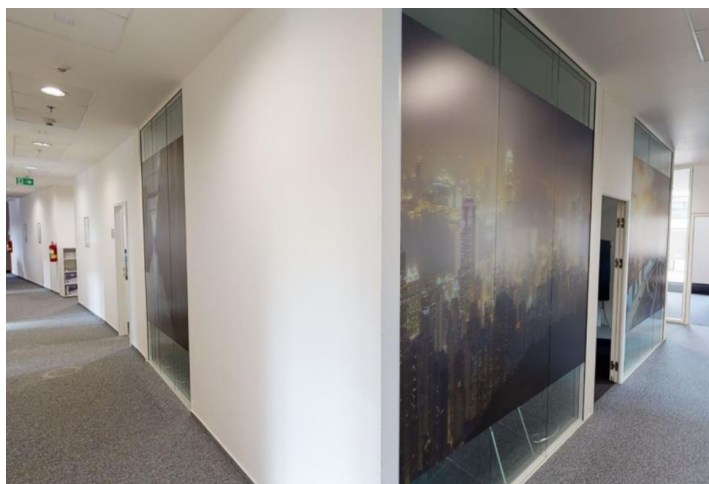
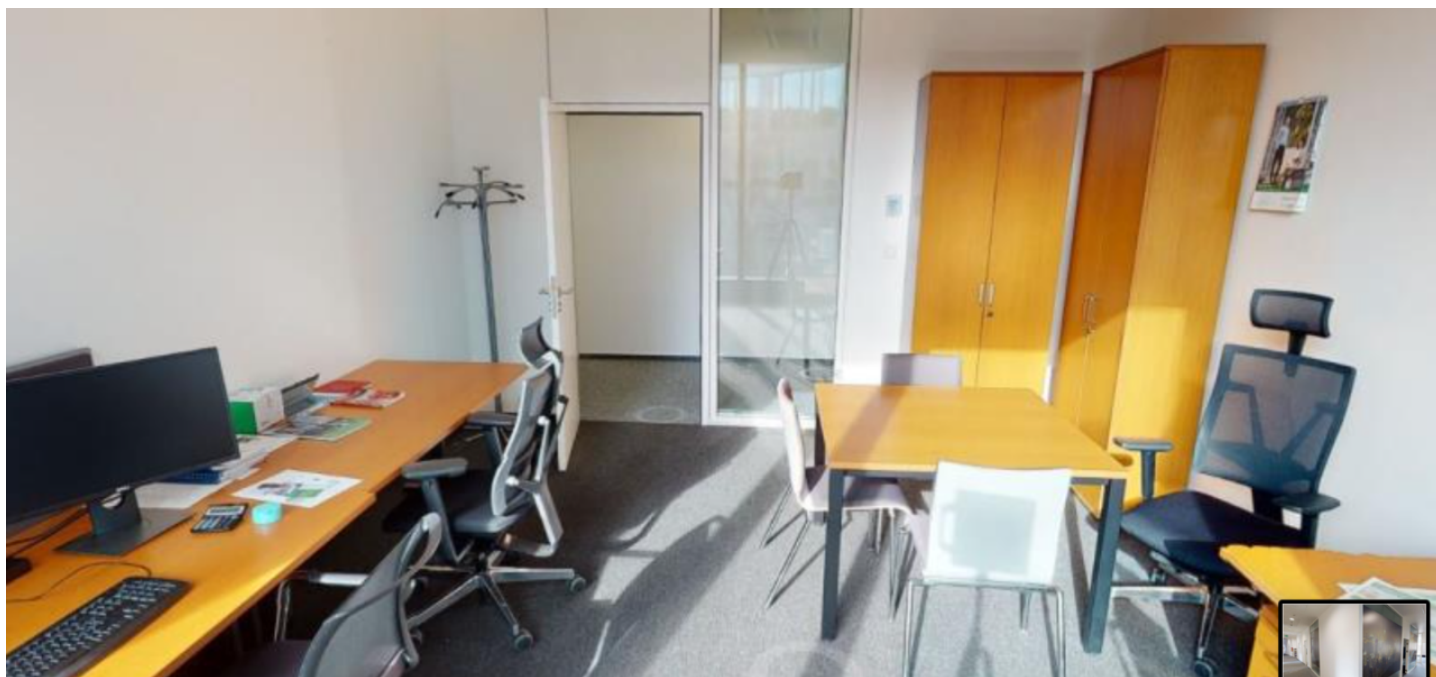




Office space

Prague 5, Jinonice, U Trezorky

Rented



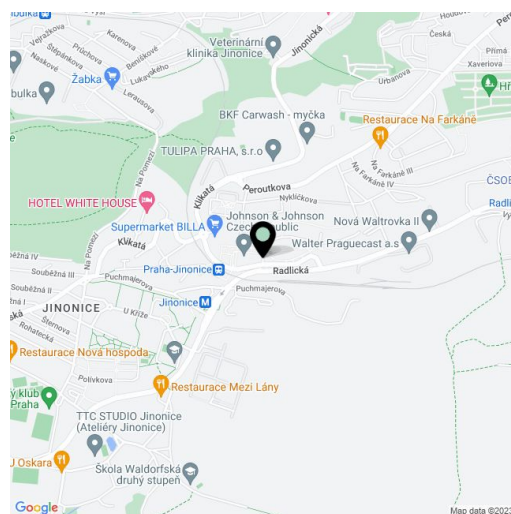


Office space

Prague 5, Jinonice, U Trezorky

Rented

Service price	100 CZK monthly per m ²
Available area	2 332 m ²
Cellar	-
Parking	EUR 110 / pp / month
PENB	G
Reference number	41170



Office space for sublease till September 2025 on the 2nd floor in the first building built in the Waltrovka complex, which offers up to 27,000 sq.m. of leasable space. The premises have the latest technical standards. There are up to 11 lifts, a representative reception and parking. The building's surroundings also offer a pleasant inner square with greenery and water features and relaxation zones. The building has won a number of prestigious international awards.

Location:

Great accessibility by car and public transport. The Jinonice metro station (line B), the Jinonice, Hutmanka and U Waltrovky bus stops and the Prague-Jinonice train station are nearby. Easy access from three main roads - Radlická, Jinonická and Peroutkova.

Features and Services:

Representative reception
 Card entry system with turnstiles
 Heating with convector heaters
 Cooling beams integrated in the ceilings
 Reduced ceilings with lighting
 Raised floors
 Opening windows
 11 lifts
 Clear height 3 m
 Parking

Images might not accurately reflect the current state of the premises.

Rental and service charges listed without VAT. Lessee pays no commission.