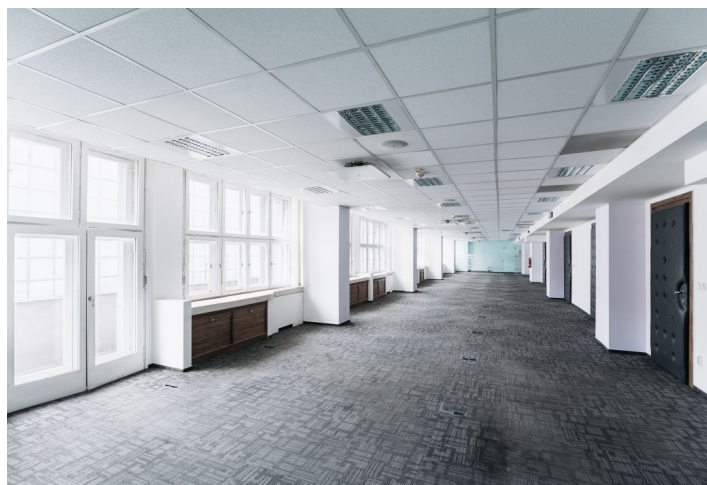
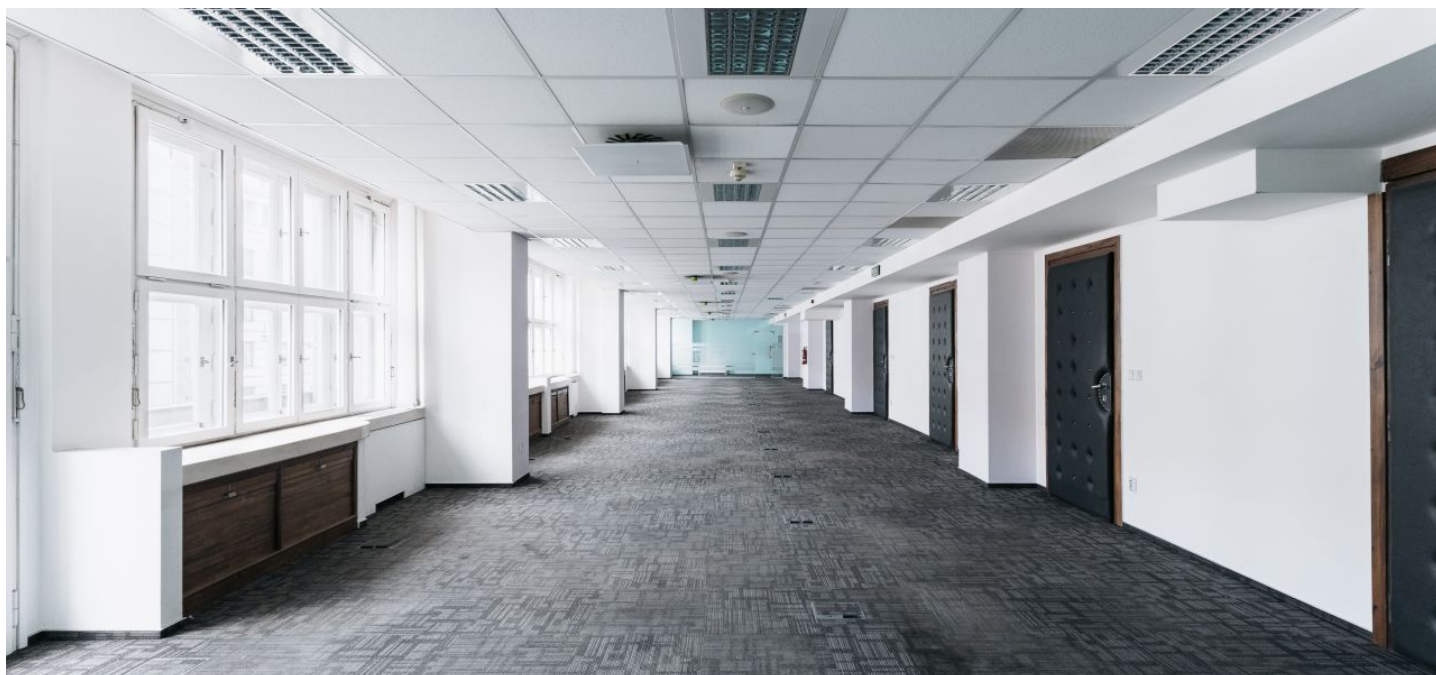




Office space

Prague 1, Nové Město, Na Poříčí

Rented





Office space

Prague 1, Nové Město, Na Poříčí

Rented

| | |
|------------------|------------------------------------|
| Service price | 175 CZK monthly per m ² |
| Available area | 376 m ² |
| Cellar | - |
| Parking | EUR 200 / ps / month |
| PENB | C |
| Reference number | 41060 |

Office space for lease on the 2nd floor of an architecturally significant complex located in the centre of Prague. The 20th century building was built in the rondocubism style according to the design of the prominent architect Josef Gočár. In the 1990s it underwent a major reconstruction and at the same time the basement theatre hall was reconstructed, creating one of the most modern theatre spaces in the country - the Archa Theatre. The unit is divided into 9 rooms + own social facilities.

Location:

Perfect accessibility by public transportation, by car and train and well developed infrastructure. There is a tram stop close to the building, while the Florenc metro and central bus station (line B, C), and the Masaryk railway station are in close vicinity.

Features and Services:

- Raised floor in the offices
- Comfort cooling
- Suspended acoustic ceiling with integrated lighting
- New light distribution in the ceilings
- Magnetic card access system
- 24-hour security service
- Reception desk

Rental and service charges listed without VAT. Lessee pays no commission.

