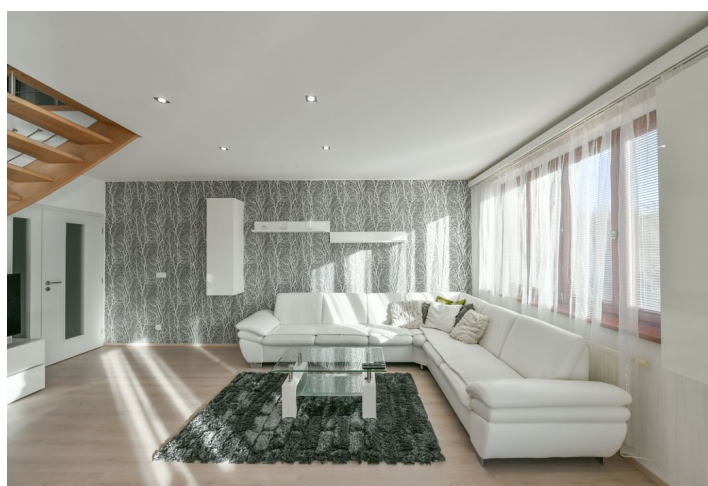
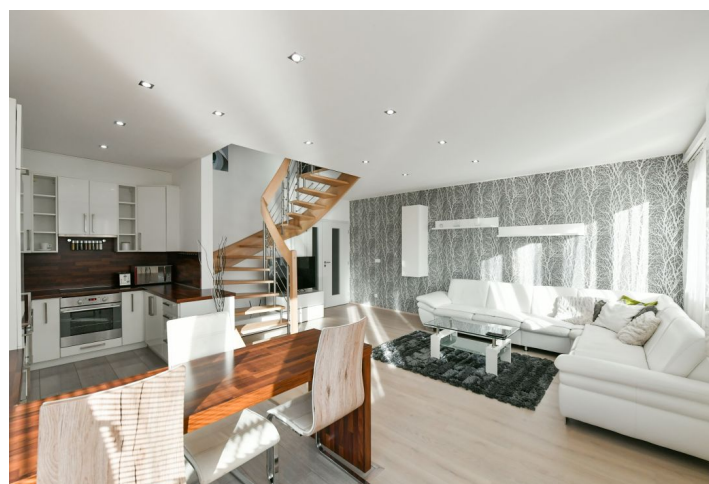




## Apartment Two-bedroom (3+kk)

Rented

101 m<sup>2</sup>, Prague 9, Hloubětín, K Náhonu





# Apartment Two-bedroom (3+kk)

Rented

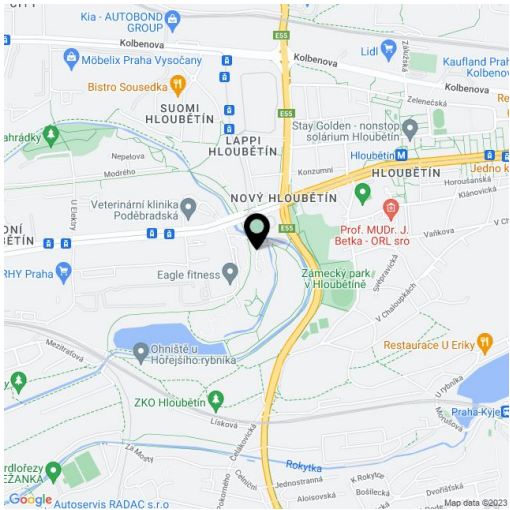
101 m², Prague 9, Hloubětín, K Náhonu

Total area	110 m²
Floor area*	101 m²
Terrace	9 m²
Parking	Garage parking.
Garage	Yes
Cellar	-
PENB	G
Reference number	40991
Available from	Immediately

This furnished 2-bedroom split-level apartment with a gallery and a terrace is on the second floor in a modern building - part of the "Kejřův mlýn" gated residential project with 24/7 security. Conveniently secluded and surrounded by a forest park with a bike path, in Hloubětín, Prague 9. Amenities include on-site children's playground, on-site property management and a monitored parking lot in front of the project. Location with full amenities within easy reach, moments to a tram stop, about a 10 minute walk to Hloubětín metro station, a 15-20 minute drive to the city center.

The lower level includes a living room with a fully fitted open plan kitchen and access to the **terrace** facing the courtyard, a toilet, and an entrance hall with built-in storage space. The upper floor offers a **gallery**, two bedrooms (one with a built-in wardrobe), and a bathroom with a bathtub and a toilet.

**Heat recovery ventilation system**, laminated floors, tiles, blinds, washing machine, dishwasher, microwave oven, TV, high speed Internet at CZK 780/month. A **garage parking** space is included. Monthly deposit for service charges, heating and water: CZK 6,500. Electricity is billed separately.



\* Area of the unit according to the Civil Code. The area consists of the sum total area of the entire unit bounded by perimeter walls.