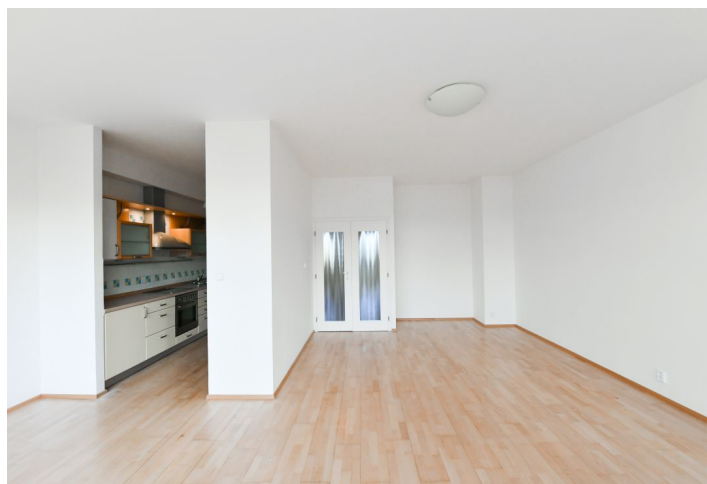




Apartment Two-bedroom (3+kk)

Rented

81.5 m², Prague 6, Veleslavín, Křenova





Apartment Two-bedroom (3+kk)

Rented

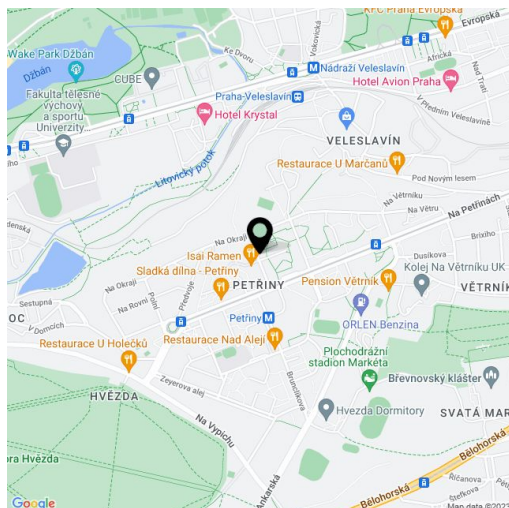
81.5 m², Prague 6, Veleslavín, Křenova

Total area	87 m²
Floor area*	82 m²
Balcony	5 m²
Parking	-
Cellar	Yes
PENB	C
Reference number	40857
Available from	Immediately

Apartment located moments from the Petřiny metro station. This is a renovated 2-bedroom apartment with a balcony, on the 5th floor of a modern building in the Areál Hvězda residential development (1996) with manned security and underground parking. Set in a quiet residential neighborhood in close vicinity of the Hvězda Park with very good amenities in the area, a quick connection to the city center (Petřiny metro, trams, buses), conveniently located for the international schools in Prague 5 and 6, and the airport.

The apartment has a living room with a fully fitted open plan kitchen and a **balcony** facing the courtyard, two bedrooms - one with a built-in wardrobe, a bathroom including a bathtub, a separate toilet, a utility room, and an entrance hall.

Hardwood floors, tiles, central heating, blinds, washing machine, dryer, dishwasher, **cellar**. Monthly deposit for service charges, water and heating: CZK 4,000. Electricity is billed separately (transfer to the tenant).



* Area of the unit according to the Civil Code. The area consists of the sum total area of the entire unit bounded by perimeter walls.