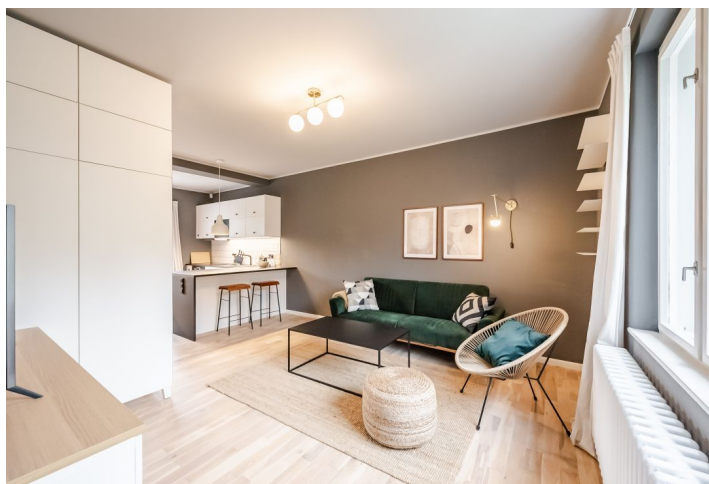




Apartment One-bedroom (2+kk)

Rented

47 m², Prague 5, Lipence, U Lip





Apartment One-bedroom (2+kk)

Rented

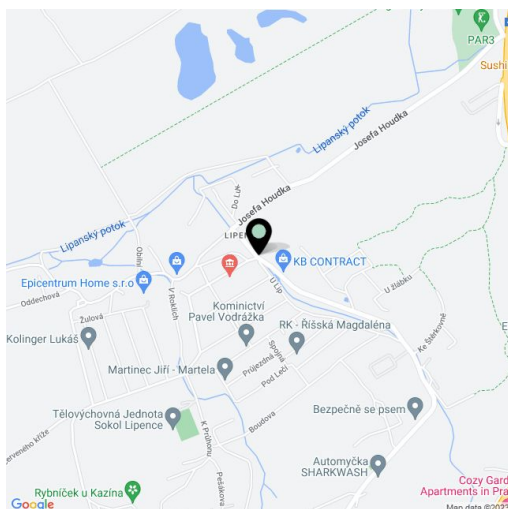
47 m², Prague 5, Lipence, U Lip

| | |
|------------------|-------------|
| Total area | 58 m² |
| Floor area* | 47 m² |
| Terrace | 11 m² |
| Garden | 1 300 m² |
| Parking | - |
| Cellar | Yes |
| PENB | G |
| Reference number | 40787 |
| Available from | Immediately |

Benefiting from a wonderful green location near the Brdy forest and access to a shared terrace and garden, this fully refurbished, fully furnished 1-bedroom flat is situated on the ground floor of a completely renovated 1930s house with a huge landscaped garden in a peaceful area in Lipence, a short drive from Zbraslav, about a 20 minute drive from the center of Prague. Location with good amenities, children's playgrounds, bike trails and a golf center close by. Conveniently located for the PBS international school in Modřany.

The apartment offers a living room with a dining area and a fully fitted open plan kitchen, a bedroom with built-in wardrobes, and a bathroom including a walk-in shower and a toilet. The shared **terrace** is accessible from the common areas of the house.

New kitchen, new equipment, hardwood parquet floors, tiles, central heating, shared laundry room with a washer and a dryer (for 2 units), dishwasher, induction cooktop, microwave oven, kitchenware, bed linen, TV, WiFi (included), alarm, video entry phone, **cellar**. The tenants can use a large **shared garden** with seating and an open fire pit / smoker. Monthly deposit for service charges and utilities is billed separately (approx. CZK 3,000/month). Apartment: 47 m², shared terrace: 11 m².



* Area of the unit according to the Civil Code. The area consists of the sum total area of the entire unit bounded by perimeter walls.