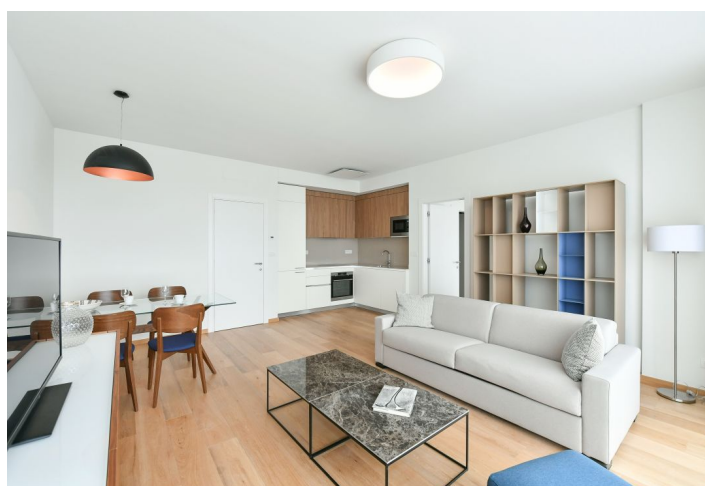
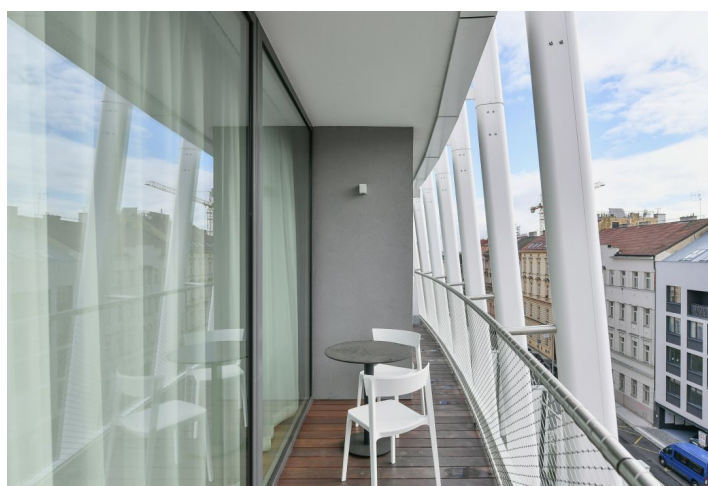




Apartment One-bedroom (2+kk)

Rented

60.37 m², Prague 5, Smíchov, Holečkova





Apartment One-bedroom (2+kk)

Rented

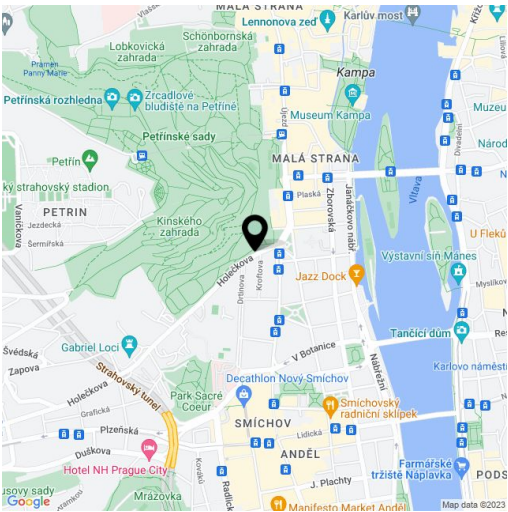
60.37 m², Prague 5, Smíchov, Holečkova

Total area	70 m²
Floor area*	60 m²
Terrace	10 m²
Parking	Garage parking.
Garage	Yes
Cellar	-
Service price	Services, utilities, and Internet are included in the rent. Monthly wellness fee CZK 2,500 for one person, each other person CZK 1,250.
PENB	B
Reference number	40765
Available from	Immediately

Boasting a terrace and charming green views, this premium, air-conditioned and fully furnished apartment for rent is on the 3rd floor of the new Ellipsis building with a reception, security, wellness, fitness (Prisma institut), a large terraced garden, and parking. Located in the attractive Hřebenka residential neighborhood near Kinský Garden and Petřín Hill Park, within easy reach of the French School and the Anděl/Nový Smíchov commercial and entertainment center. The location also offers regular bus connections and quick access to the city center and the airport.

The interior features a living room with a fully fitted open plan kitchen and dining area, a bedroom, a bathroom, an additional separate toilet, and an entrance hall. The **terrace** is accessible from both main rooms.

Heat recovery ventilation, hardwood floors, tiles, built-in wardrobes, underfloor heating, sofabed, washer/dryer, dishwasher, induction cooktop, microwave oven, kitchenware, bed linen, towels, TV, video entry phone, alarm, Internet (included), charging station for electric cars in the garage. **Garage parking** is available at EUR 200 + VAT/space/month. The rent includes 12% VAT.



* Area of the unit according to the Civil Code. The area consists of the sum total area of the entire unit bounded by perimeter walls.