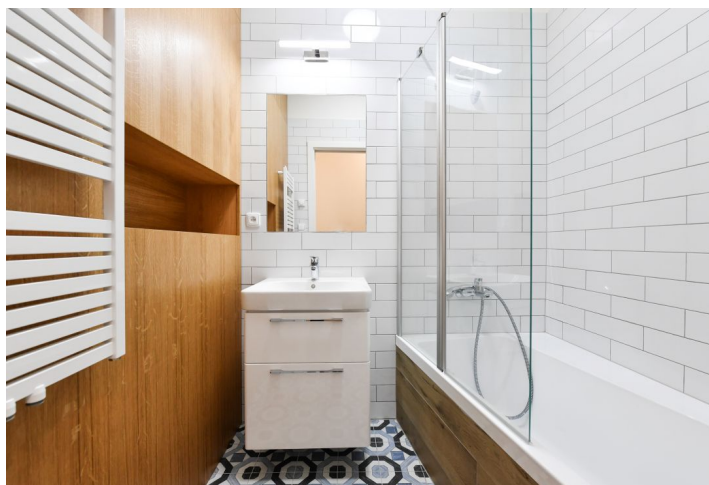




Apartment One-bedroom (2+1)

Rented

74 m², Prague 7, Bubeneč, Čechova





Apartment One-bedroom (2+1)

Rented

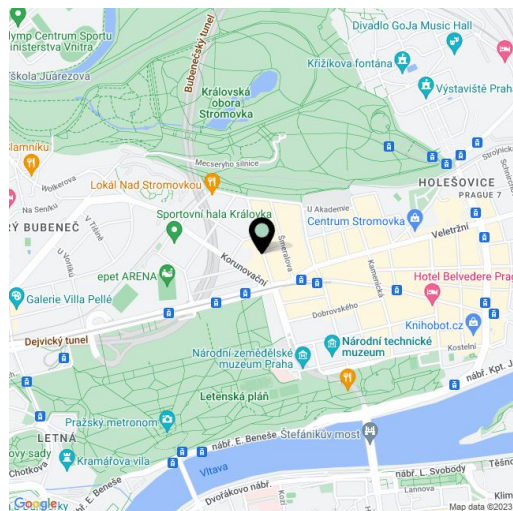
74 m², Prague 7, Bubeneč, Čechova

Total area	76 m²
Floor area*	74 m²
Balcony	2 m²
Parking	-
Cellar	Yes
PENB	G
Reference number	40525
Available from	Immediately

Apartment in Čechova street next to Stromovka Park. This fully refurbished 1-bedroom apartment facing a tranquil tree lined street is on the fourth floor of a renovated traditional building with a lift. Situated just steps from the largest park in Prague, a 15 min. walk to the city center through another popular Prague park - Letná, and not far from the Prague Castle. The highly sought after location offers complete amenities and very quick access to the city center - a tram stop is a few minute walk from the building and it's a few steps to Hradčanská (line A) and Vltavská (line C) metro stations. Conveniently located for the airport and numerous international schools.

The interior features a living room, a fully fitted kitchen with a pantry, a bedroom with a fitted **walk-in closet** and **balcony** access, a bathroom including a bathtub, a separate toilet, and an entrance hall. The tenants can use a **shared roof terrace** suitable for BBQ.

Vinyl floors, tiles, security entry door, built-in wardrobes, gas boiler, underfloor heating in the bathroom and kitchen, washer / dryer, dishwasher, induction cooktop. Monthly deposit for service charges and water: CZK 1000. Gas and electricity are billed separately (transfer to the tenant).



* Area of the unit according to the Civil Code. The area consists of the sum total area of the entire unit bounded by perimeter walls.