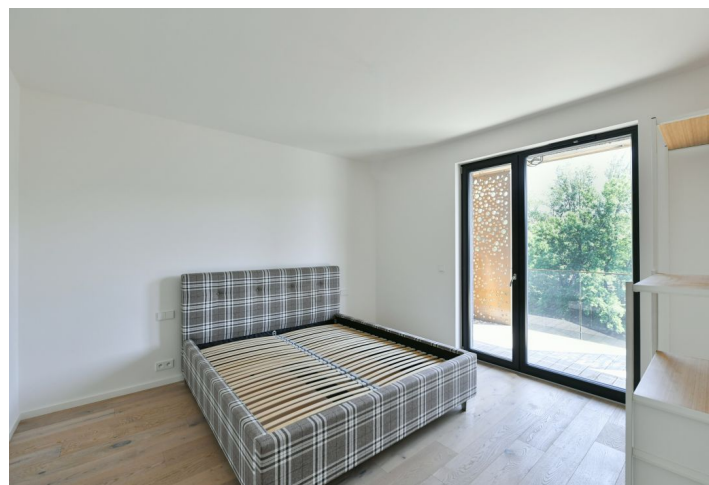
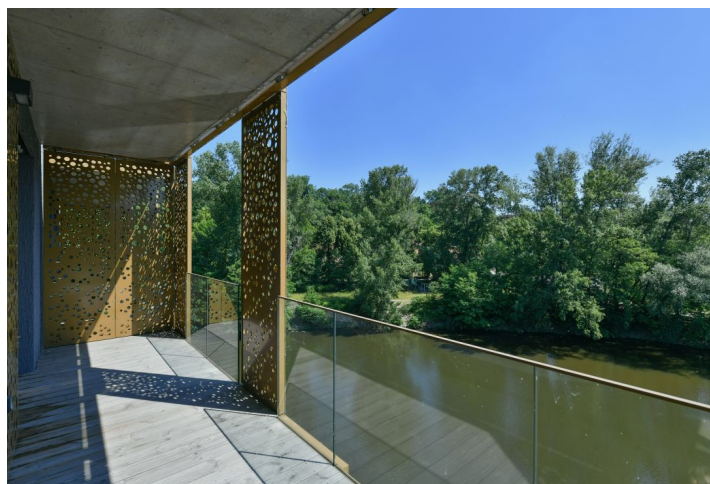
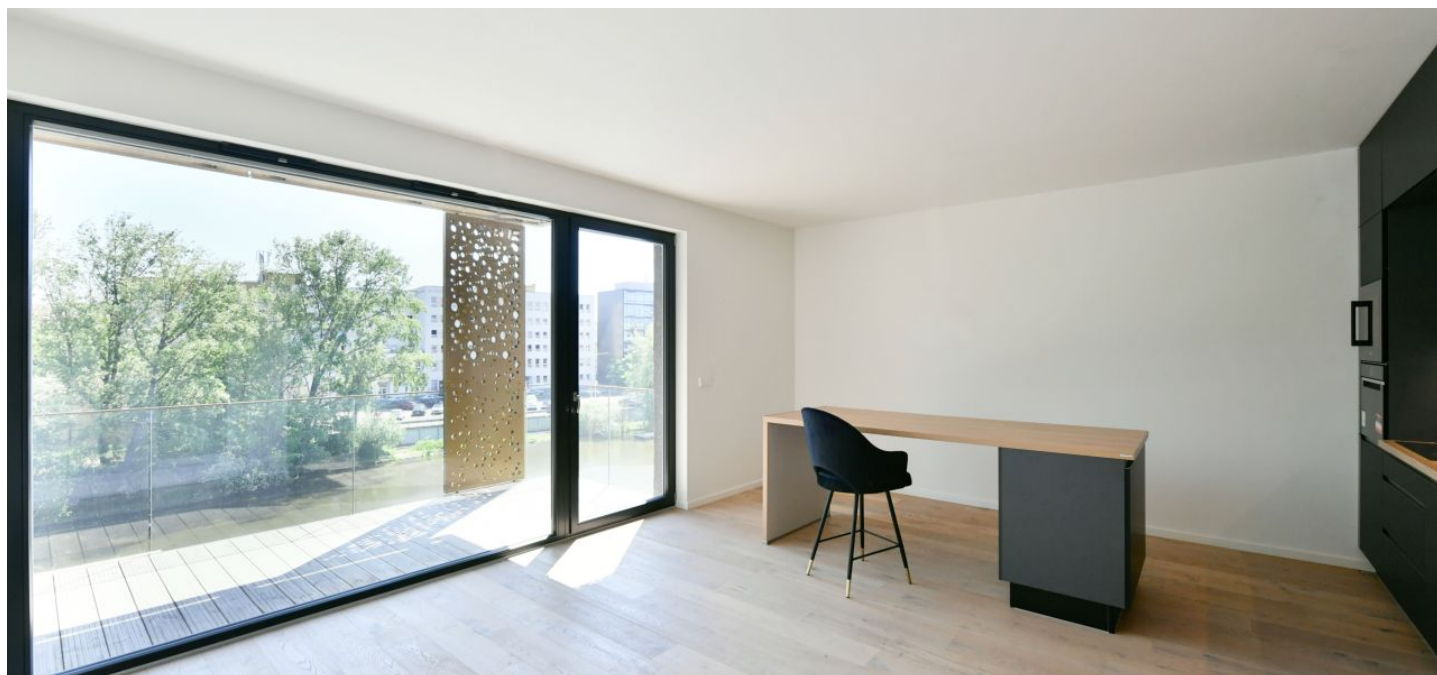




## Apartment One-bedroom (2+kk)

Rented

58 m², Prague 8, Libeň, Smrčková





## Apartment One-bedroom (2+kk)

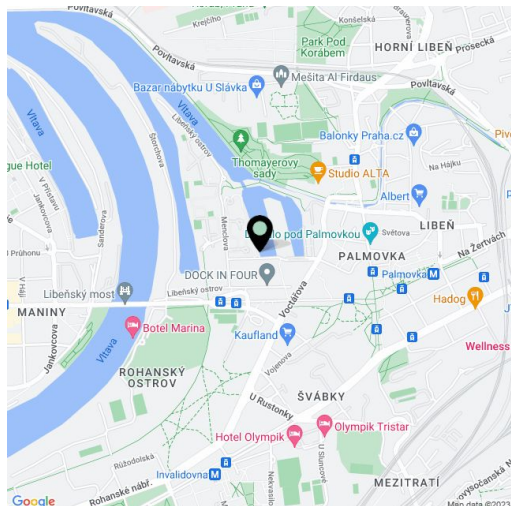
**Rented**58 m<sup>2</sup>, Prague 8, Libeň, Smrčková

Total area	70 m <sup>2</sup>
Floor area*	58 m <sup>2</sup>
Terrace	12 m <sup>2</sup>
Parking	One garage space at CZK 2,000 per month.
Garage	Yes
Cellar	Yes
PENB	B
Reference number	39796
Available from	Immediately

This new, partly furnished one-bedroom flat with an east-facing terrace is located on the 3rd floor of a building with a reception and garage, which is a part of the DOCK project and is located in a revitalized area with a unique atmosphere due to the proximity of the river. The surroundings offer sports activities, such as golf or tennis courts. In the nearby Thomayer Gardens, a cycle path runs along the Rokytka River. Civic amenities within easy reach, 10 minutes walk to the metro station and tram stops in Palmovka, where is a supermarket, theater and medical center.

The interior of the apartment consists of a living room with a fully equipped kitchen, bedroom with an en-suite bathroom (bathtub, toilet), separate toilet, an entrance hall and a utility room with a connection for washer. Both rooms are connected to a **large terrace overlooking the river**.

**Wooden floors** and ceramic tiles, **underfloor heating**, security entrance door, rebateless interior doors, **wooden windows** with insulating glass, induction hob, dishwasher. One **garage space** available for CZK 2,500 per month. Monthly deposit for common building charges, water and heating CZK 4,000 / month. Electricity is billed separately.



\* Area of the unit according to the Civil Code. The area consists of the sum total area of the entire unit bounded by perimeter walls.