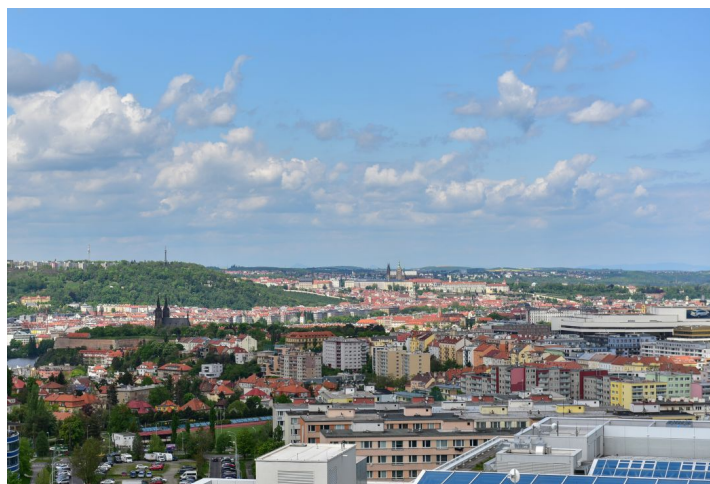
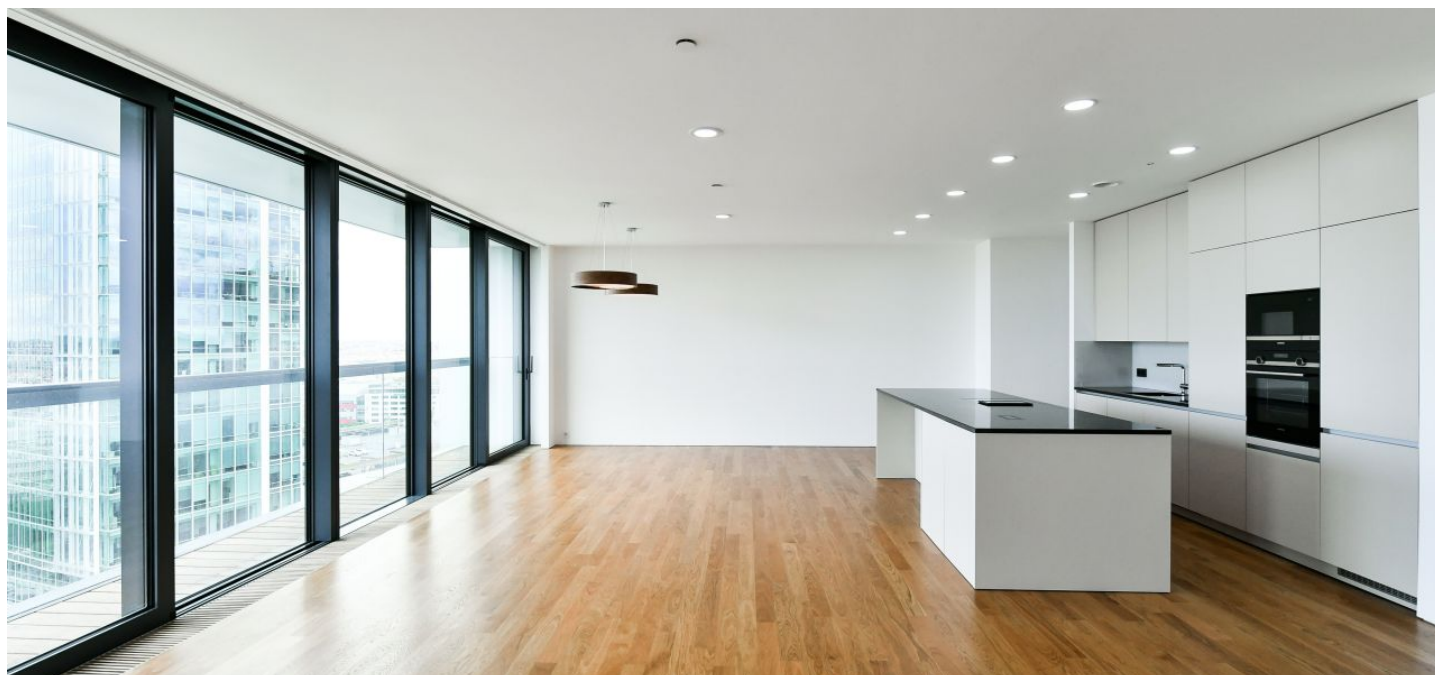




Apartment Three-bedroom (4+kk)

Ask for price

207 m², Prague 4, Krč, Milevská





Apartment Three-bedroom (4+kk)

[Ask for price](#)

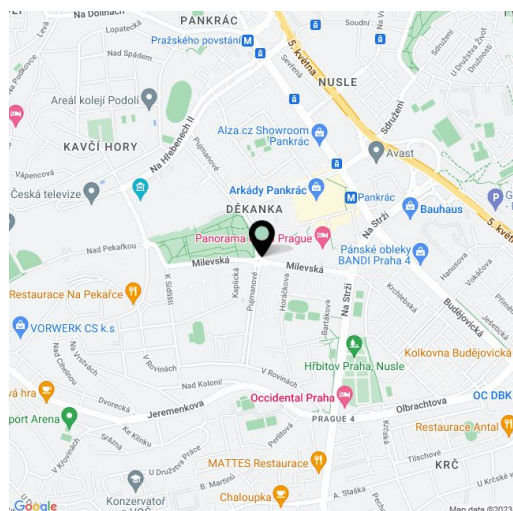
207 m², Prague 4, Krč, Milevská

Total area	246 m²
Floor area*	207 m²
Terrace	39 m²
Parking	Two garage parking spaces.
Garage	Yes
Cellar	Yes
PENB	B
Reference number	39407
Available from	Immediately

This high-end 3-bedroom 3-bathroom flat has 2 terraces with panoramic view of Prague is located on the 17th floor of a unique high-rise building V Tower designed for demanding clients. Non-stop reception with concierge services, security, fitness center, indoor pool, wellness area with whirlpool, steam and Finnish sauna, golf simulator, fast charging station for electric cars, conference room, children's playroom and cinema. The high-tech building is currently the tallest building in the Czech Republic and stands in the vicinity of the commercial and administrative zone of Prague 4, near Central Park and Kavčí hory Park.

The unfurnished apartment is surrounded by **2 terraces** with access from all main rooms. The interior consists of a large living room with dining area and fully equipped kitchen, 3 bedrooms with 3 bathrooms, master bedroom with **walk-in closet**, separate toilet, entrance hall and utility room.

Large floor to ceiling French windows with insulating tripple glazing and **panoramic views of Prague**, including Hradčany, Petřín and other landmarks, **parquet floors**, tiles, Siemens kitchen appliances (oven, dishwasher, induction hob), **recuperation system, security and fireproof entry door**. 2 garage spaces. Monthly deposit fro common buidling charges, heating and water CZK 24,000. Electricity is billed extra.



* Area of the unit according to the Civil Code. The area consists of the sum total area of the entire unit bounded by perimeter walls.