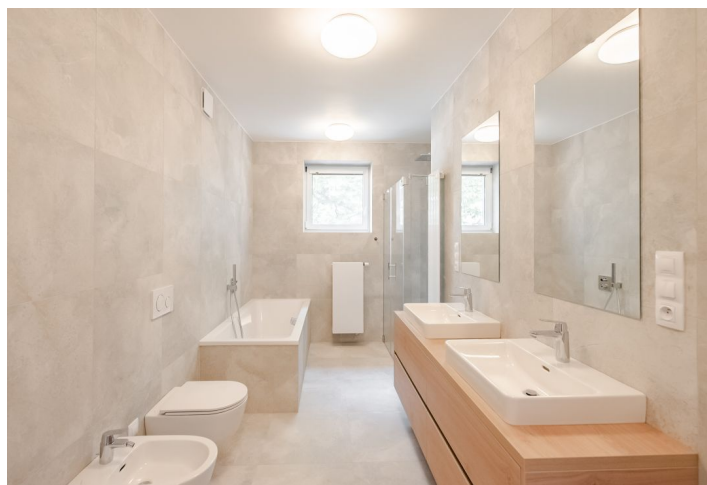




House Five-bedroom (6+kk)

Rented

350 m², Prague 6, Suchdol, Bažantní





House Five-bedroom (6+kk)

Rented

350 m², Prague 6, Suchdol, Bažantní

Plot	1 330 m²
Foot print	277 m²
Garden	1 053 m²
Parking	Yes
Garage	Yes
Cellar	Yes
Service price	Deposit for water and waste collection charges CZK 3,000/month, gas and electricity will be billed separately.
PENB	C
Reference number	39372
Available from	Immediately

Unfurnished family house with a large garden in a nice and quiet location of traditional buildings in Starý Suchdol with a rural atmosphere, proximity to nature, and convenient reach of the ČZU (Czech University of Life Sciences) University campus university campus, Riverside and ISP international schools, the airport and all services, and the bus to the Dejvická metro station.

The ground floor has a living room with a dining area and a partially separated kitchenette and **winter garden** with access to the terrace and grassy **sunny garden**. Furthermore, a guest bedroom with a built-in wardrobe, a large bathroom (bathtub, shower, 2 sinks, toilet, bidet), a separate toilet, a large fitted wardrobe, a laundry room, an entrance and central hall with built-in wardrobe, and a staircase. On the 1st floor is a master bedroom with an area of about 40 m² (can be use as a game room, for example), an en-suite bathroom (shower, toilet, bidet), and walk-in closet, another bedroom with a walk-in closet and **terrace** facing the garden, a 3rd bedroom also with a walk-in closet (with extra connection for a washer), a 4th bedroom, a central bathroom (bathtub, shower, toilet, sink), and a storage room.

Vinyl floors, **central laundry chute**, built-in wardrobes, blinds, microwave, **induction hob**, dishwasher, central extraction of bathrooms and toilet, **ornamental pond** with carps, **cellar** under the garden house, gas boiler heating. Gate and entrance to the **double garage** with remote control, alarm and camera security system. Possible to use adjoining land/garden (approx. 3,550 m²). Seasonal spring and autumn maintenance of the garden included in the rent.

