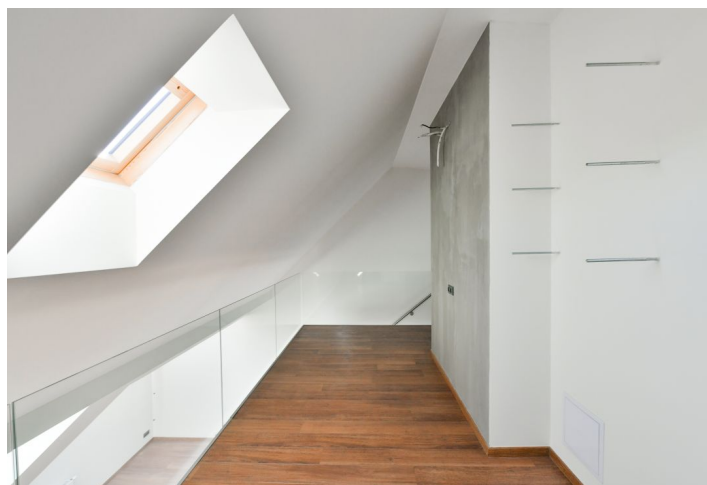
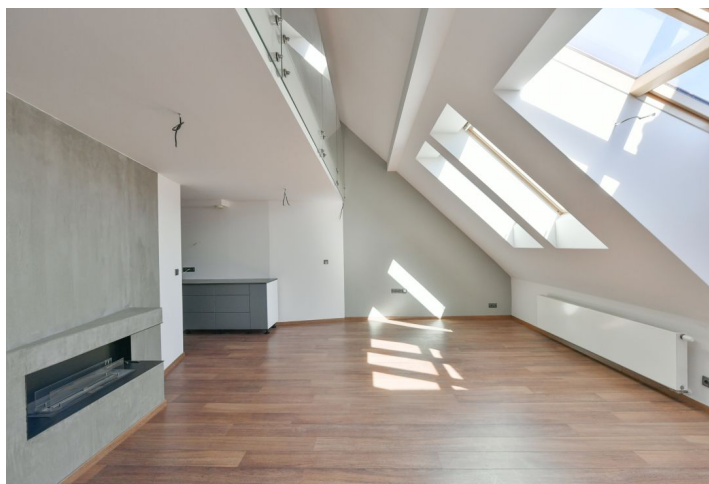
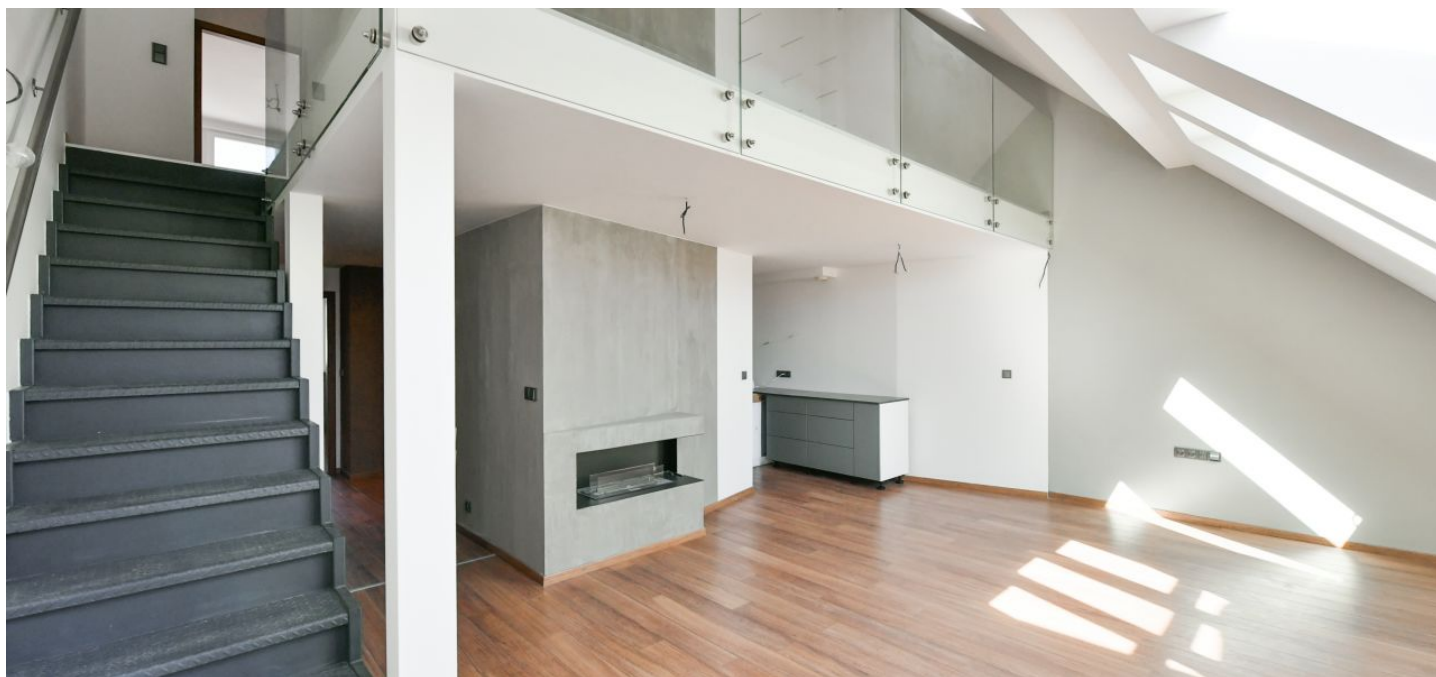




Apartment Three-bedroom (4+kk)

Sold

156.9 m², Prague 4, Nusle, Jaromírova





Apartment Three-bedroom (4+kk)

Sold156.9 m², Prague 4, Nusle, Jaromírova

| | |
|------------------|--------------------|
| Total area | 162 m ² |
| Floor area* | 157 m ² |
| Terrace | 5 m ² |
| Parking | - |
| Cellar | - |
| Service price | 4 900 CZK monthly |
| PENB | G |
| Reference number | 39326 |

This generously apportioned attic duplex apartment with a terrace is located in an Art Nouveau building near the city center and the Folimanka and Na Bělce parks, within walking distance of the popular Výtoň embankment. The city center is within 5 minutes by tram and complete urban amenities are at your fingertips.

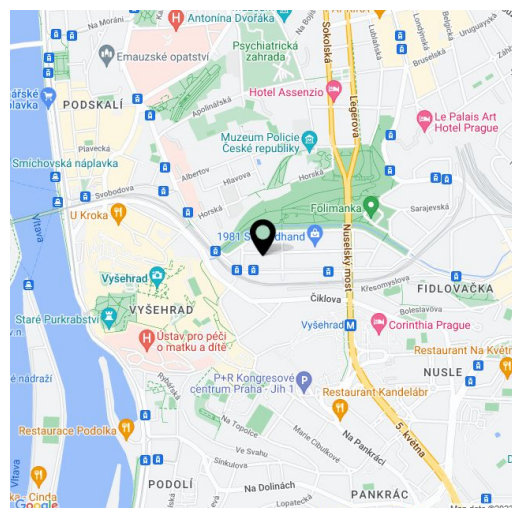
On the entrance level (on the 5th floor), there is a living room lit by **studio windows**, a kitchen, 2 bedrooms facing a **quiet courtyard**, a bathroom, a separate toilet, and a hall. From the living room, a staircase leads to a **gallery** suitable as a study or library. In this upper level there is also a master bedroom with a dressing room, a bright bathroom, and a terrace with breathtaking panoramic views, including of **Prague Castle**.

Facilities include **large wooden windows**, vinyl floors (Quick step), a **bio fireplace**, a partially equipped kitchen (dishwasher, refrigerator with a freezer, and a hot air and microwave ovens).

The neighborhood provides everything you need for everyday life and at the same time is perfectly accessible. Nearby are cafes, restaurants, and classic Nusle pubs, shops including a supermarket, a pharmacy, and schools ranging from a kindergarten to high school, including a **ScioSchool**. It is also home to the **Na Fidlovačce Theater**. Right next to the building is a tram stop with a large number of links, including night ones. A few steps lead to **Folimanka Park** with a wide range of sports activities; the **Na Bělce park** is also close-by. You can walk to the legendary Vyšehrad complex or to the Vltava River **embankment**.

Interior 156.9 m², terrace 5.4 m².

In addition to regular property viewings, we also offer real-time video viewings via WhatsApp, FaceTime, Messenger, Skype, and other apps.



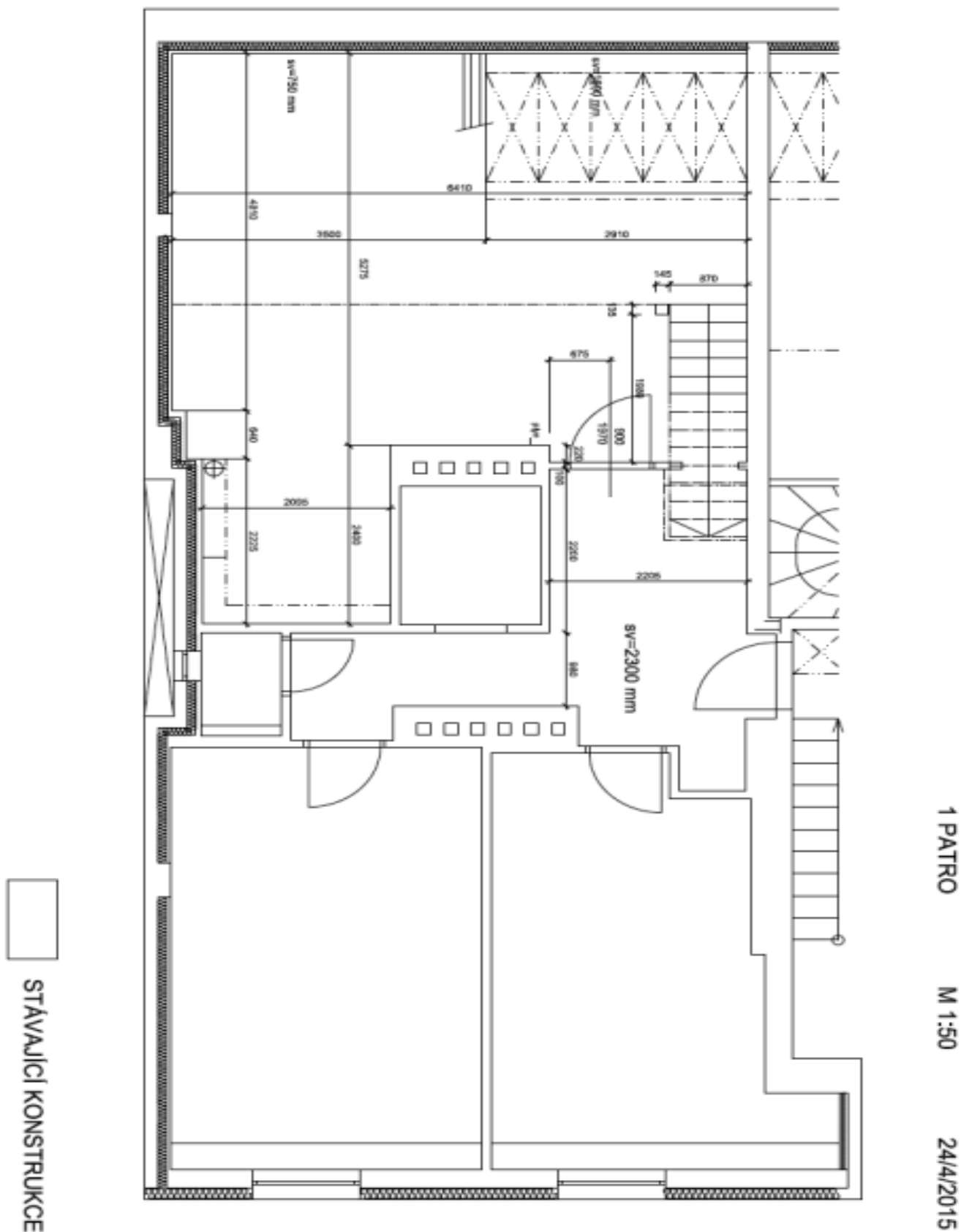
* Area of the unit according to the Civil Code. The area consists of the sum total area of the entire unit bounded by perimeter walls.



Apartment Three-bedroom (4+kk)

Sold

156.9 m², Prague 4, Nusle, Jaromírova

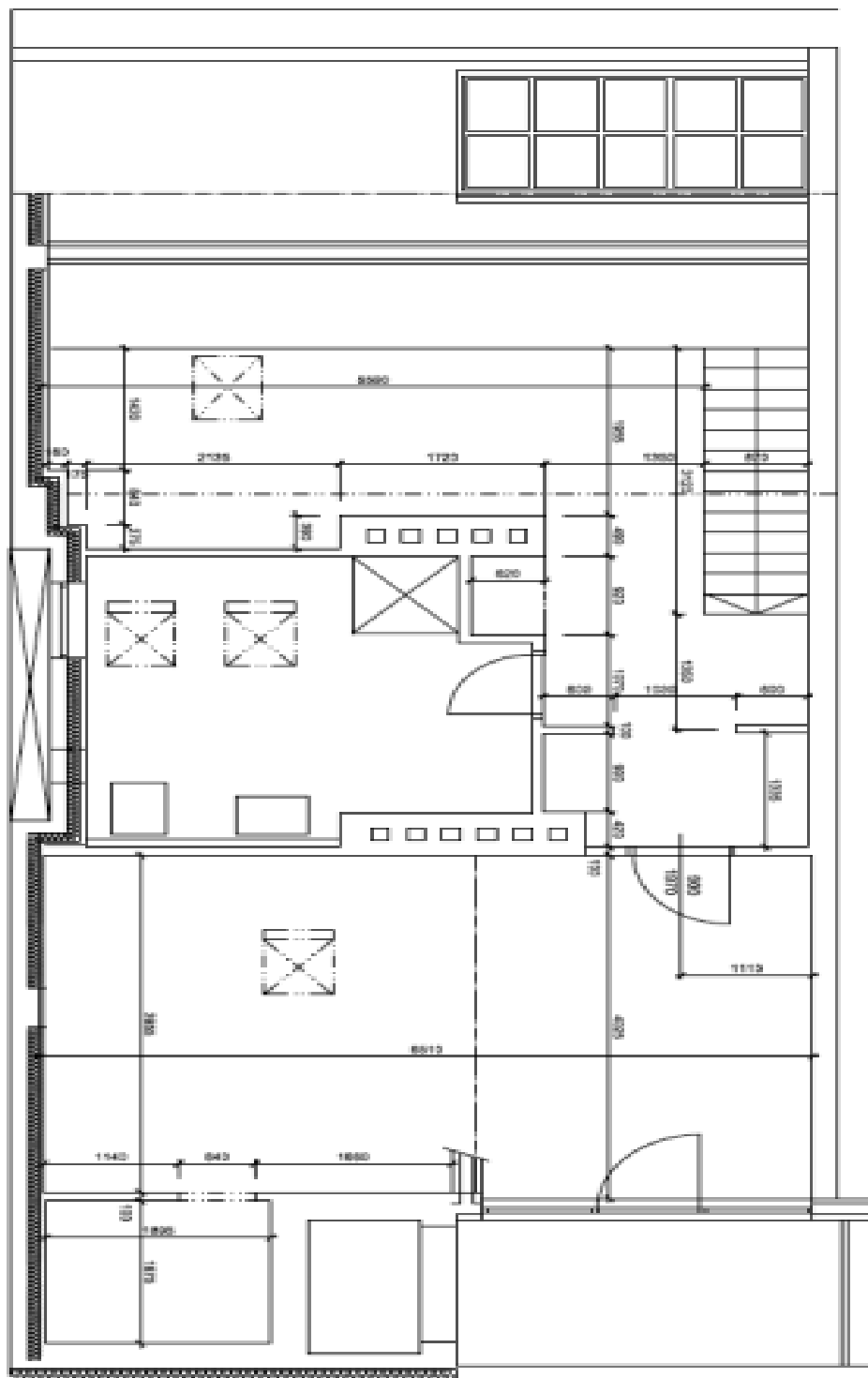




Apartment Three-bedroom (4+kk)

Sold

156.9 m², Prague 4, Nusle, Jaromírova



STAVAJÍCÍ KONSTRUKCE

2 PATRO

M 1:50

24/4/2015