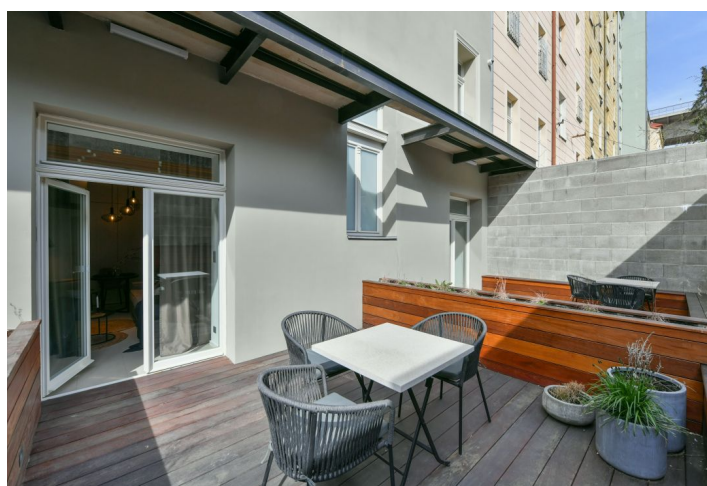
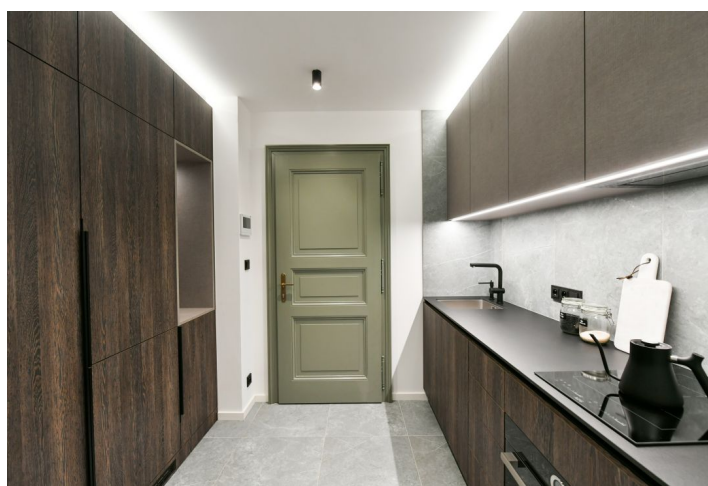




## Apartment Studio (1+kk)

29 m², Prague 2, Nusle, Jaromírova

Rented





## Apartment Studio (1+kk)

**Rented**

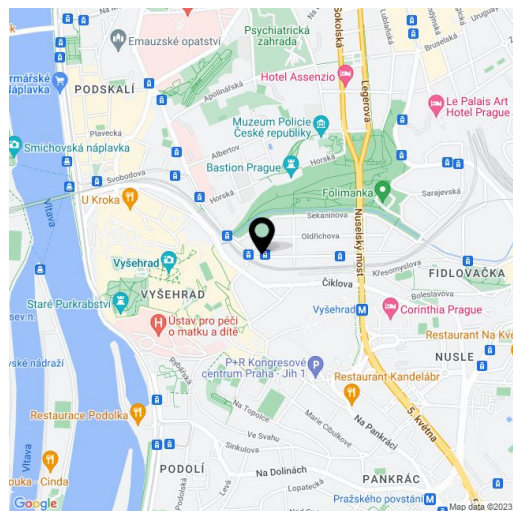
29 m², Prague 2, Nusle, Jaromírova

Total area	50 m²
Floor area*	29 m²
Terrace	21 m²
Parking	-
Cellar	-
PENB	G
Reference number	39297
Available from	Immediately

Boasting a 21 m² terrace, this high quality, fully furnished studio apartment has been completely newly refurbished to provide the comforts of a modern lifestyle. Situated on the lower ground floor of a fully renovated apartment building with no lift, in an attractive part of Nusle in close vicinity of the Vyšehrad Castle, Lumírový sady and Folimanka Park. The location offers rich amenities including cafes, restaurants, delicatessen and fresh produce shops, plus very quick access to the city center, with a tram stop just steps from the building. Within easy reach is the Na Fidlovačce Theater and the Jezerka Park with the Na Jezerce Theater.

The apartment features a living room / bedroom with a fully fitted open plan kitchen and access to a large **terrace** facing the courtyard, a bathroom including a walk-in shower, a sink and a toilet, and an entrance hall.

Quality equipment and finishes, built-in wardrobes and storage, **solid wood parquet floors**, tiles, central heating, washing machine, video entry phone. Monthly deposit for service charges, water and heating: CZK 2000 for one person. Electricity is billed separately.



\* Area of the unit according to the Civil Code. The area consists of the sum total area of the entire unit bounded by perimeter walls.