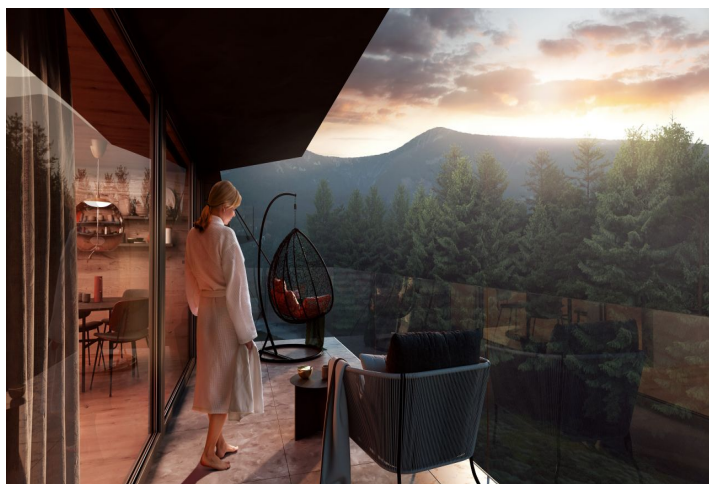




Apartment Two-bedroom (3+kk)

Sold

113.3 m², Trutnov, Pec pod Sněžkou, Pec pod Sněžkou





Apartment Two-bedroom (3+kk)

Sold

113.3 m², Trutnov, Pec pod Sněžkou, Pec pod Sněžkou

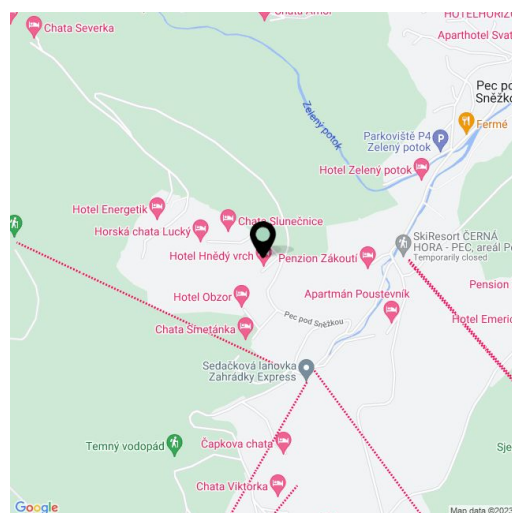
Total area	143 m²
Floor area*	113 m²
Loggia	30 m²
Parking	1 parking spaces
Cellar	-
PENB	G
Reference number	38984

Would you like to have your own private slice of the mountains that you don't need to take care of? Surrounded by nature with your family and enjoying your time together, or planning a weekend alone to recharge your batteries? Be the first to ski down the slope in the morning, take a walk through the woods for hours, listen to its sounds and breathe in its scents, observe wildlife in its natural habitat, go to the sauna, take a dip in the pool, have a drink in the private lobby? This boutique project with 10 private apartments in the largest Czech ski resort with views of Mount Sněžka makes all of this possible. Estimated completion in Q4/2023.

In the [Bramberk Apartments](#) project, you're not just buying an apartment. You can also relax in the modern **lounge** with a kitchen and self-service bar, the **wellness** area with a 15-meter **pool and Jacuzzi**, the relaxation room, or the **sunny terrace**. An apartment comes with **problem-free parking** - 1 parking space near the apartment and 1 garage space for purchase directly in Pec pod Sněžkou in the Hotel Javor, where you can park not only during the day while you go skiing, but also in the evening when you go out to one of the town's famous restaurants for dinner. **Complete services**, including those that cater to your personal comfort (delivery, shopping, securing firewood, ski passes, etc.) will be provided by the administrator, even during your absence.

This duplex apartment offers, on the entrance floor (on the 1st floor), a living room, a kitchen with a dining room, a hallway, a toilet, a foyer, and a staircase hall. Upstairs are 2 large bedrooms, a hall, a bathroom, and a room with a preparation for an **infrared sauna**. All rooms have access to one of the **south-facing loggias** with beautiful views of the forests of the **Krkonoše National Park**. With a touch of unpretentious luxury, the interiors are decorated in natural colors in muted tones. Facilities include **air-conditioning** with a heating function, an **oak staircase**, three-layer **oak floors** with a choice of 3 colors, large aluminum windows and loggia doors with insulated triple-glazed panes, wooden entrance doors with a security lock, fire protection, and hydraulic shutters, a videophone, **Villeroy & Boch and Kaldewei sanitary ware**, loggia heating, and a **fireplace** (choice of 3 types). A customized interior can be created by the **Konstepti studio** if the client wishes.

The building with 2 elevators is the result of the reconstruction of an architecturally important recreation center for the State Bank of Czechoslovakia from the 1970s designed by the architect **Vladimír Vokatý**, co-author of the **O2 arena**. The project includes large plots of land, guaranteeing protection against development in the immediate vicinity. The new apartments are located 200 meters from the **Hnědý Vrch ski lift** and 1 km from the **Javor ski lift**. Hiking trails, including one that goes up **Mount Sněžka** begin just outside the building. The drive from Prague to the apartment takes about 135 minutes and from Hradec Králové less than 90 minutes.



* Area of the unit according to the Civil Code. The area consists of the sum total area of the entire unit bounded by perimeter walls.



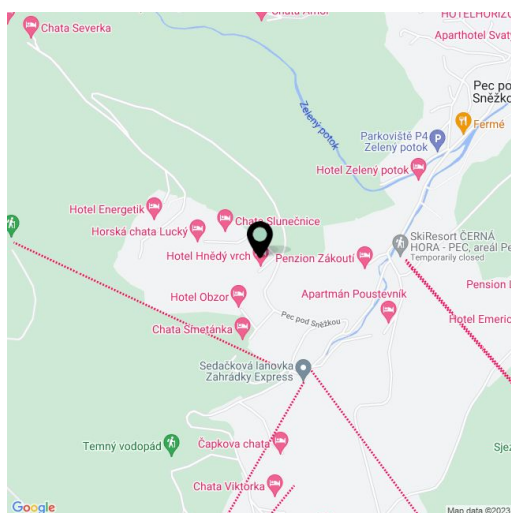
Apartment Two-bedroom (3+kk)

Sold113.3 m², Trutnov, Pec pod Sněžkou, Pec pod Sněžkou

Total area	143 m ²
Floor area*	113 m ²
Loggia	30 m ²
Parking	1 parking spaces
Cellar	-
PENB	G
Reference number	38984

Floor area 113.3 m², loggia 30.1 m².

For more information about the project visit the website

www.apartmanybramberk.cz.


* Area of the unit according to the Civil Code. The area consists of the sum total area of the entire unit bounded by perimeter walls.



Apartment Two-bedroom (3+kk)

Sold

113.3 m², Trutnov, Pec pod Sněžkou, Pec pod Sněžkou



BRAMBERK

apartmány

APARTMÁN ČÍSLO **05**

<p>Dispozice</p> <p>Podlaží</p> <p>Celková plocha apartmánu*</p> <p>Plocha ložnice</p> <p>Parkovací stání</p>	<p>3+KK</p> <p>2. NP a 3. NP</p> <p>113,3 m²</p> <p>30,1 m²</p> <p>Ano</p>
--	--

<p>01 Předstih</p> <p>02 Toalety</p> <p>03 Chodba</p> <p>04 Obýtný prostor</p> <p>05 Chodba</p> <p>06 Ložnice</p> <p>07 Ložnice</p> <p>08 Koupelna</p> <p>09 Sauna</p> <p>Ostatní plochy a příčky</p>	<p>9,45 m²</p> <p>3,54 m²</p> <p>6,08 m²</p> <p>33,97 m²</p> <p>5,23 m²</p> <p>15,05 m²</p> <p>15,05 m²</p> <p>7,07 m²</p> <p>4,64 m²</p> <p>13,22 m²</p>
---	---

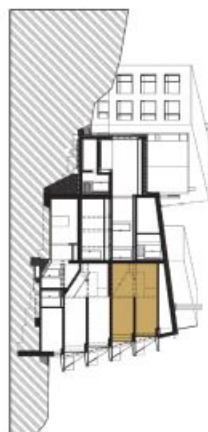
Exkluzivní zástoupení:

svoboda&williams | CHRISTIE'S
INTERNATIONAL REAL ESTATE

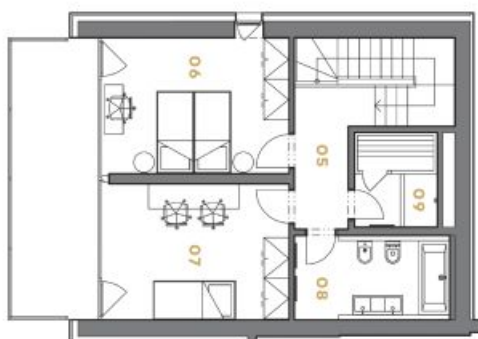
* Apartmány Bramberk si vyhrazují právo na změny. Veškeré metrické a informační jsou pouze orientační. Součástí kupní ceny apartmánu není nabytí. Celková plocha apartmánu je včetně ploch příček a vnitřních nosných stěn dle výkresu nábídky 366/2013 Sb.



2. NP



3. NP



apartmanybramberk.cz

Na Peřištně 2, 110 00, Praha 1
+420 257 328 281, +420 724 551 238
info@apartmanybramberk.cz