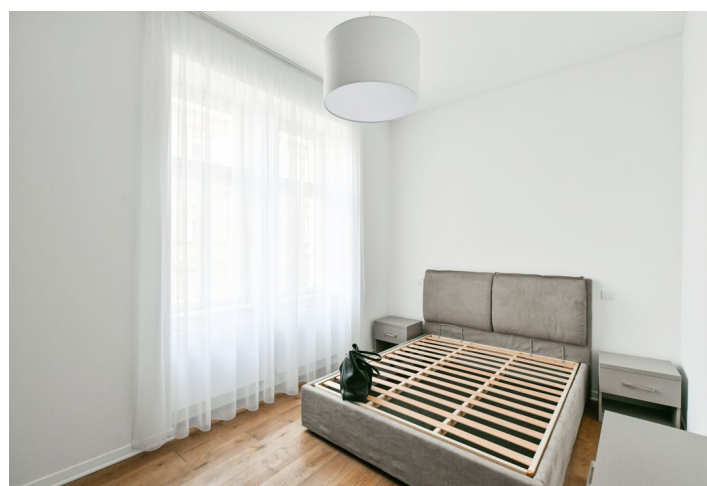
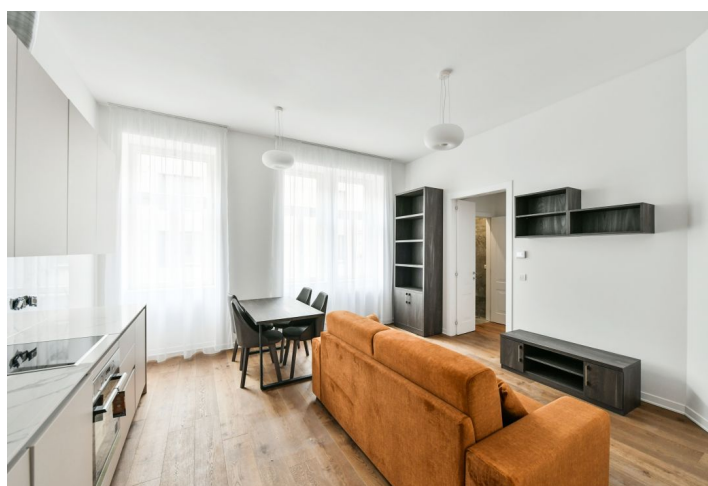
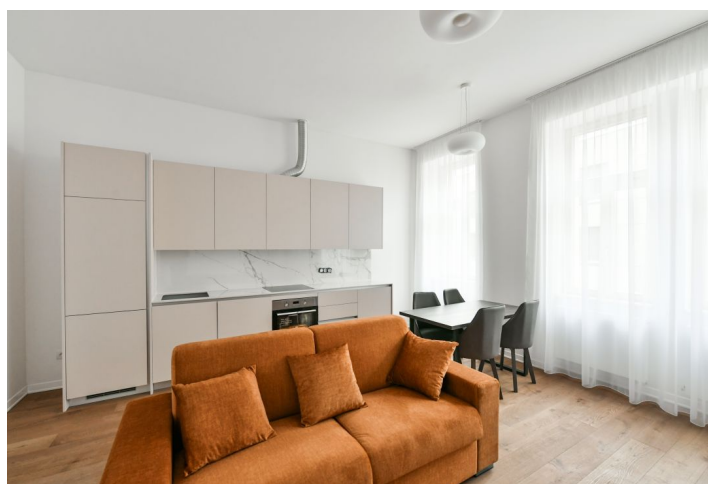




Apartment Two-bedroom (3+kk)

Rented

68 m², Prague 5, Smíchov, Kmochova





Apartment Two-bedroom (3+kk)

Rented

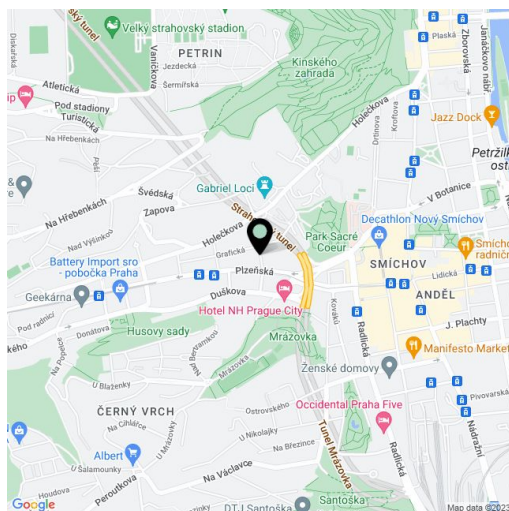
68 m², Prague 5, Smíchov, Kmochova

Total area	68 m²
Parking	-
Cellar	Yes
PENB	G
Reference number	38924
Available from	Immediately

This is a fully renovated and furnished 2-bedroom apartment on the first floor of a completely newly refurbished traditional building with a lift. Located in Hřebenky, a much sought after residential area in close vicinity of the Sacre Coeur Park, Kinský Gardens, Petřín Hill and Nový Smíchov shopping and entertainment center. Quiet area with bus connections, convenient to Újezd trams (a bus stop is moments from the building), Anděl metro, and the French School, with quick access to the city center as well as the airport.

The apartment includes a living room with a fully fitted open plan kitchen and a dining area, a master bedroom with built-in wardrobes, plus a second bedroom, a shower room with a toilet, and an entrance hall.

Quality equipment and finishes, **hardwood floors**, tiles, central heating, dishwasher, basement storage unit. Monthly deposit for service charges, water and heating: CZK 2,000. Electricity is billed separately.



* Area of the unit according to the Civil Code. The area consists of the sum total area of the entire unit bounded by perimeter walls.