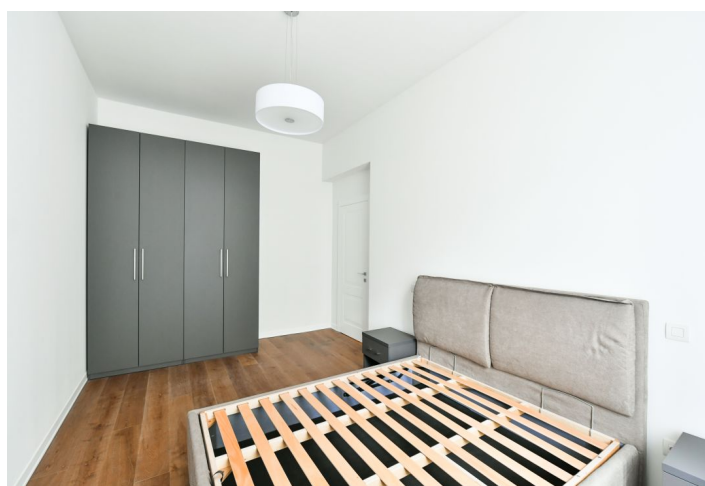
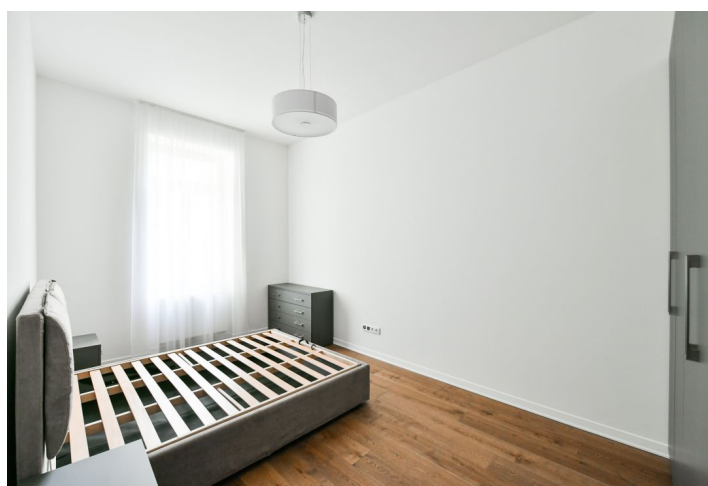




Apartment Two-bedroom (3+kk)

Rented

69 m², Prague 5, Smíchov, Kmochova





Apartment Two-bedroom (3+kk)

Rented

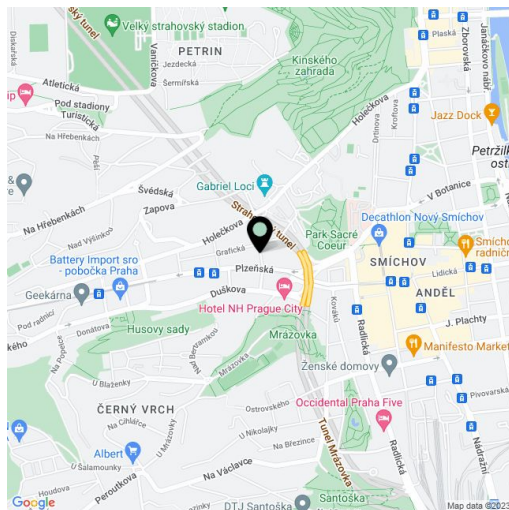
69 m², Prague 5, Smíchov, Kmochova

Total area	69 m²
Parking	-
Cellar	Yes
Service price	Monthly deposit for services, water, and heating: CZK 5,800. Electricity - transferred to the tenant.
PENB	G
Reference number	38923
Available from	Immediately

This fully renovated and furnished apartment is on the 1st floor of a completely refurbished traditional building with an elevator located in Hřebenky, a much sought-after residential area in close vicinity of Sacre Coeur Park, Kinský Gardens, Petřín Hill, and the Nový Smíchov shopping and entertainment center. A quiet area with bus connections, convenient to the Újezd tram stop (a bus stop is moments from the building), Anděl metro station, and the French School, with quick access to the city center as well as to the airport.

The apartment includes a living room with a fully fitted open plan kitchen and dining area, a master bedroom facing the courtyard with built-in wardrobes, plus a second bedroom, a shower bathroom with a toilet, and an entrance hall.

Quality equipment and finishes, **hardwood floors**, tiles, central heating, dishwasher, **basement storage unit**.



* Area of the unit according to the Civil Code. The area consists of the sum total area of the entire unit bounded by perimeter walls.