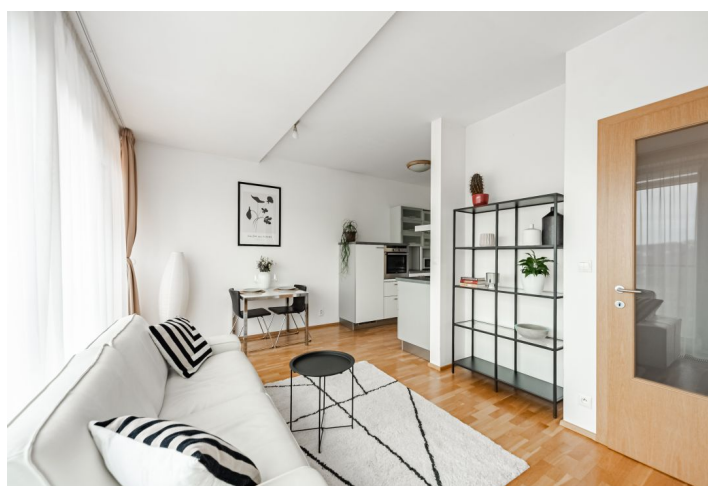
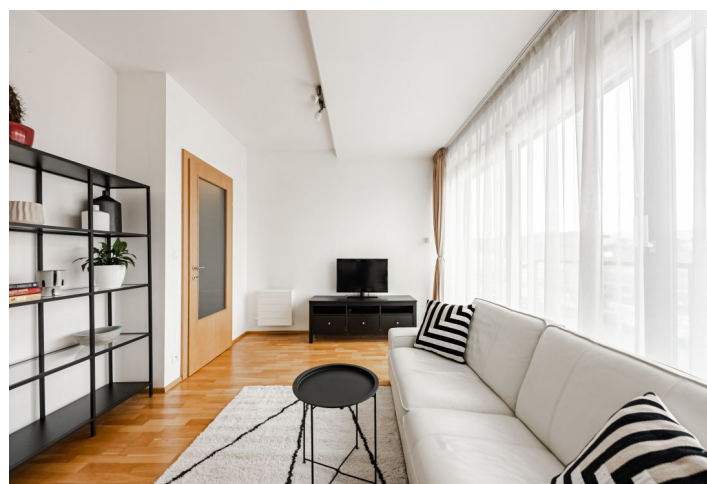
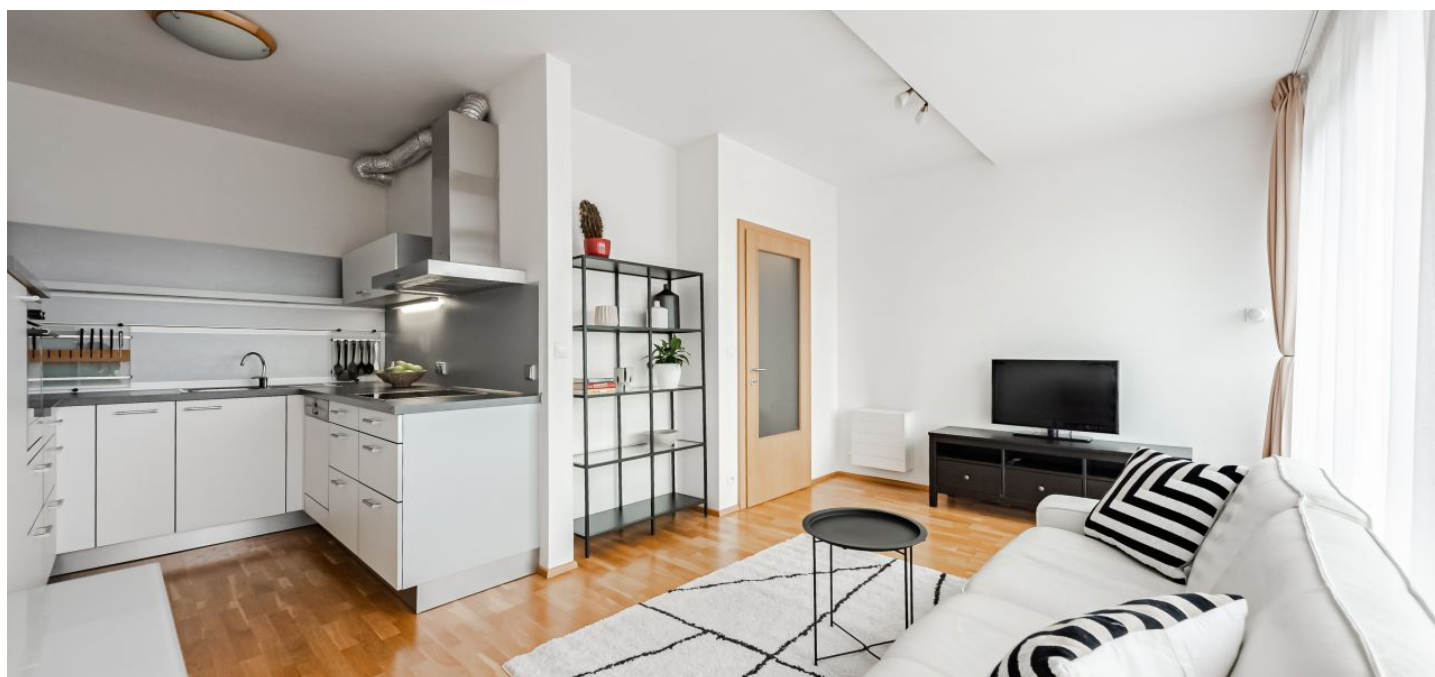




Apartment One-bedroom (2+kk)

Rented

50 m², Prague 7, Holešovice, V Přístavu





Apartment One-bedroom (2+kk)

Rented

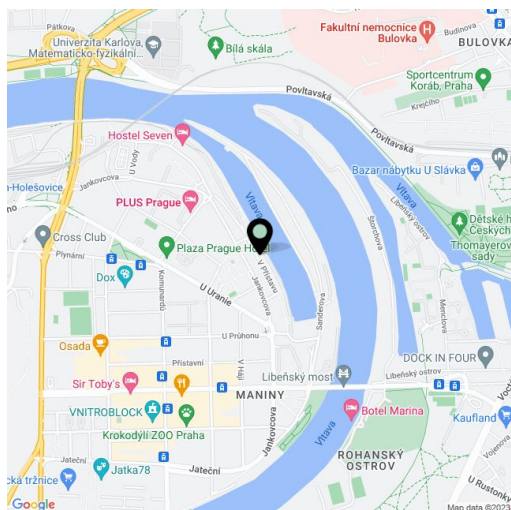
50 m², Prague 7, Holešovice, V Přístavu

Total area	50 m²
Parking	-
Cellar	-
Service price	Monthly deposit for services, water, and heating: approx. CZK 4,500. Electricity is billed separately.
PENB	C
Reference number	38862
Available from	Immediately

Enjoying unobstructed views of the river and the greenery all around, this furnished apartment is situated on the 6th floor of the PRAGUE MARINA residential project with a reception, security cameras, and underground parking. Located right on the Vltava riverbank in Holešovice, Prague 7, within easy reach of full amenities, incl. stylish restaurants, bistros, and cafes, and with very good connections to the city center. The Nádraží Holešovice, Palmovka, and Vltavská metro stations are a few tram stops away, and the DOX Center for Contemporary Art and the La Fabrika theater are close-by.

The apartment offers a living room with a dining area and a fully fitted open plan kitchen, a bedroom with a built-in wardrobe, a bathroom including a bathtub and a toilet, a laundry/storage room, an additional separate toilet, and an entrance hall. Both the bedroom and the living room have French windows overlooking the river.

Basic furniture, **hardwood parquet floors**, tiles, security entry door, central heating, washing machine, dishwasher, microwave oven, TV, chip entry, wheelchair accessible.



* Area of the unit according to the Civil Code. The area consists of the sum total area of the entire unit bounded by perimeter walls.