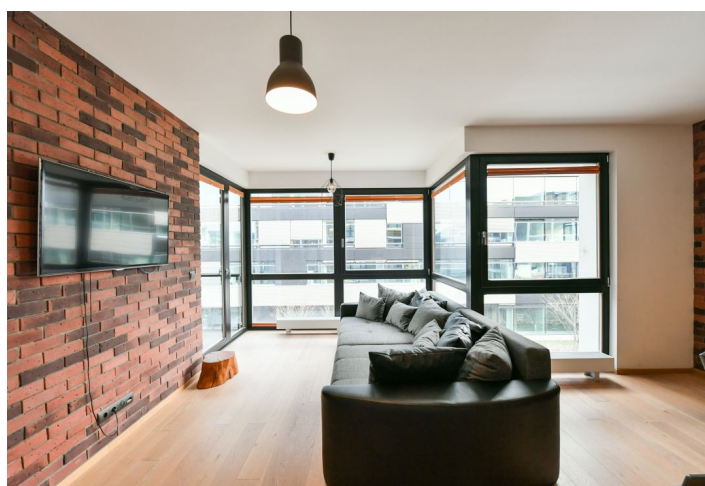
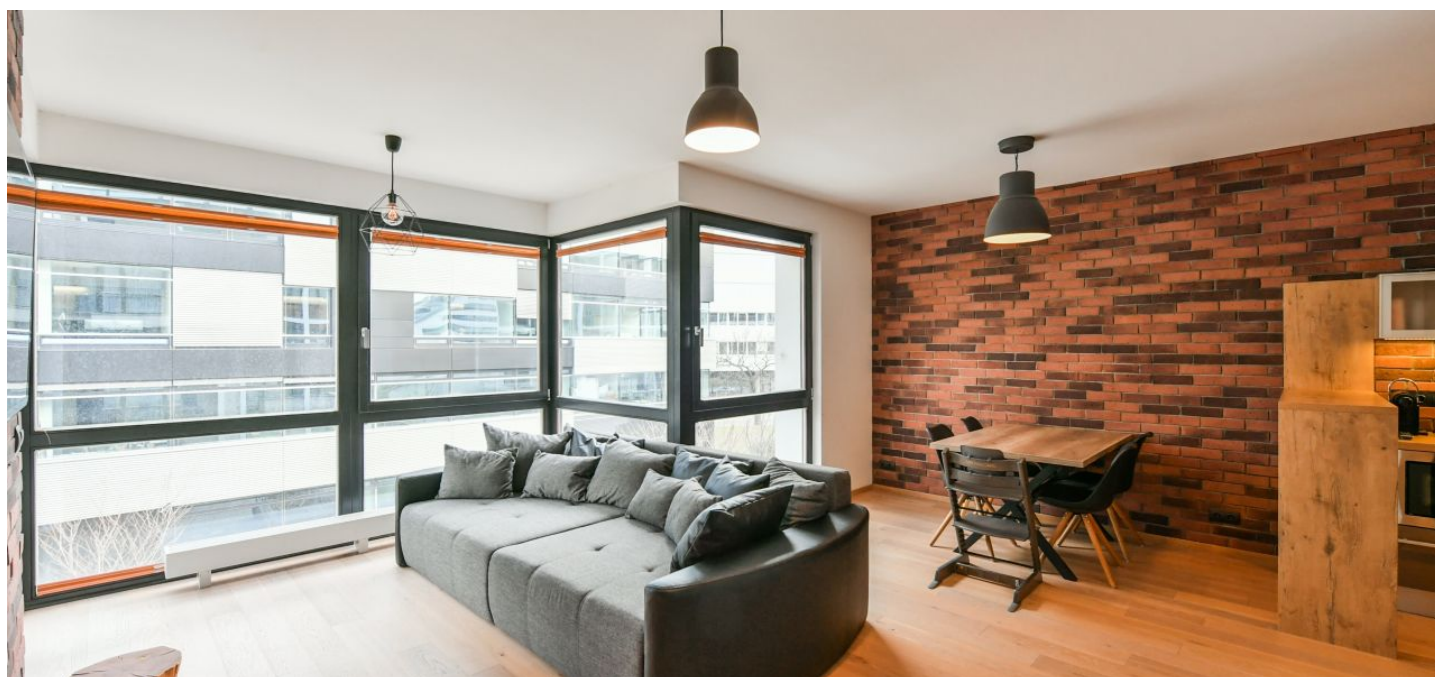




## Apartment One-bedroom (2+kk)

Rented

56 m², Prague 8, Libeň, Voctářova





## Apartment One-bedroom (2+kk)

**Rented**

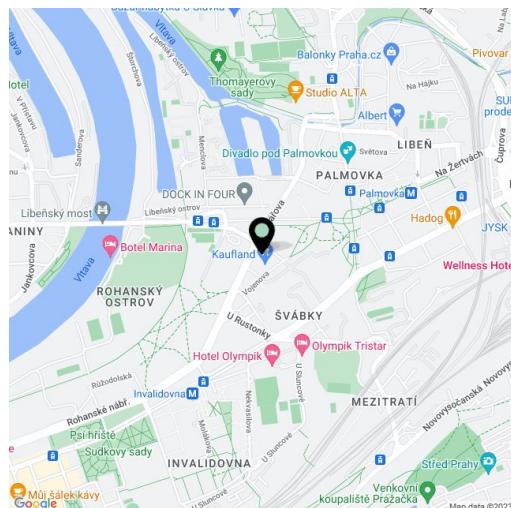
56 m², Prague 8, Libeň, Voctářova

Total area	61 m²
Floor area*	56 m²
Balcony	5 m²
Parking	-
Cellar	-
PENB	B
Reference number	38842
Available from	Immediately

This completely furnished 1-bedroom apartment with a balcony is situated on the second floor of an apartment building in DOCK, a recently built residential project with security, parking and a harbour for private yachts and small boats. Located on the Vltava riverbank, in a revitalized waterfront area on the border of the Karlín and Libeň neighborhoods. Full amenities are within easy reach, as are tram connections and the Palmovka metro station, just a short walk away. The Thomayerovy sady Park, Libeňský zámek Chateau, and sports facilities (bike path, tennis courts, golf driving range) are within walking distance. The area has a vibrant cultural scene, with the Divadlo Pod Palmovkou Theater and the DOX Center for Contemporary Art located nearby.

The interior features a bedroom, a living room with a fully fitted open plan kitchen and a dining area, a bathroom with a bathtub and a toilet, and an entrance hall. The **balcony** is accessible from both the bedroom and the living room.

**Hardwood floors**, tiles, security entry door, floor-to-ceiling windows, central heating, washing machine, dishwasher, microwave oven, TV, chip entry to the building. Monthly deposit for service charges and utilities is billed separately.



\* Area of the unit according to the Civil Code. The area consists of the sum total area of the entire unit bounded by perimeter walls.