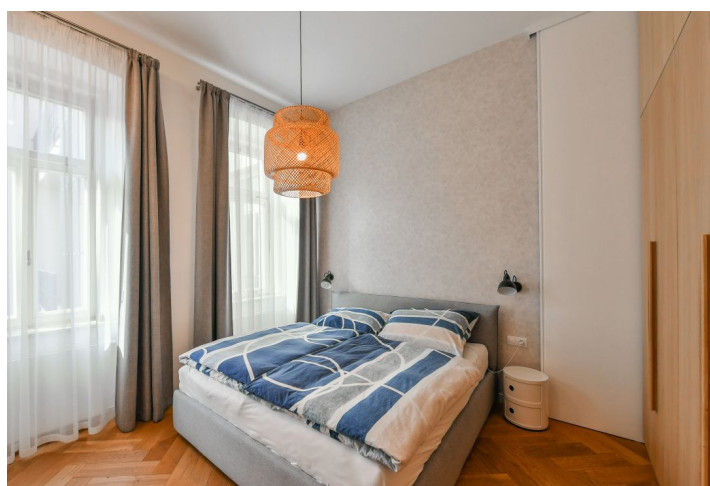




Apartment One-bedroom (2+kk)

Rented

58 m², Prague 5, Smíchov, Na Bělidle



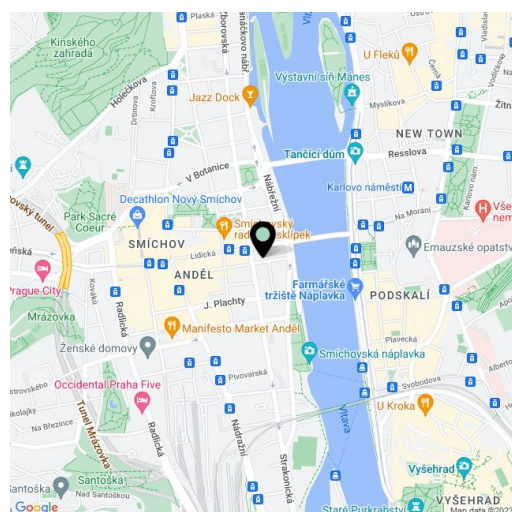


Apartment One-bedroom (2+kk)

Rented

58 m², Prague 5, Smíchov, Na Bělidle

Total area	67 m²
Floor area*	58 m²
Balcony	9 m²
Parking	Garage parking.
Garage	Yes
Cellar	Yes
Service price	Monthly deposit for service charges, water, and heating: CZK 4,500. Electricity will be transferred to the tenant.
PENB	C
Reference number	38783
Available from	Immediately



This high standard, fully furnished, quiet 1-bedroom apartment with a large balcony and parking is on the third floor of the White Garden Residence, a recently completely refurbished Art Nouveau building in close vicinity of the Vltava riverbank. Boasting very quick access to the city center—just a minute's walk to the Anděl metro station. The location offers full amenities and services within immediate reach incl. the Nový Smíchov commercial and entertainment center. Conveniently located for the French School.

The apartment features a comfortable living room with a fully integrated kitchen, a dining area, and access to the balcony, a bedroom with a walk-in closet, a bathroom (bathtub, toilet), and an entrance hall with built-in wardrobes. The windows face a quiet courtyard.

Quality equipment and finishes, high ceilings, large-format windows, hardwood oak parquet floors, tiles, security entry door, central heating, washer, dryer, dishwasher, induction cooktop, microwave oven, garden furniture, TV, cellar, pram storage in the building, elevator. A garage parking space is available at CZK 2,000/month. Available from 15th of March 2023.

* Area of the unit according to the Civil Code. The area consists of the sum total area of the entire unit bounded by perimeter walls.