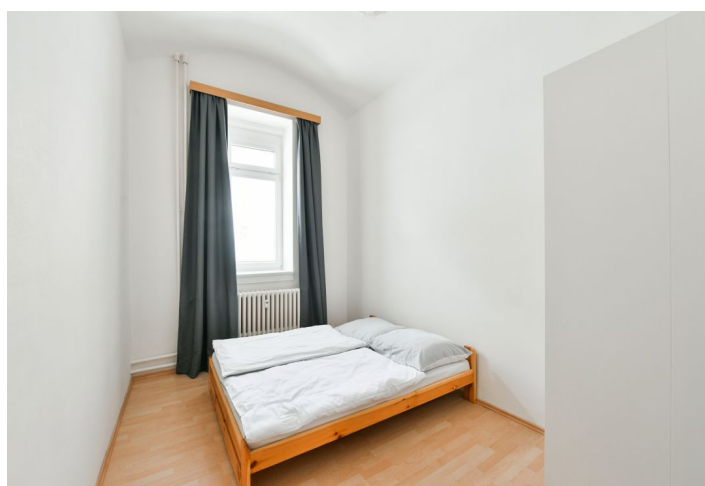
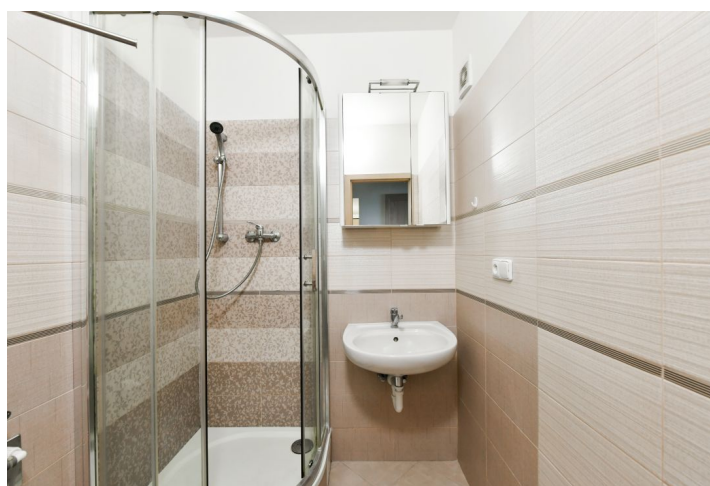
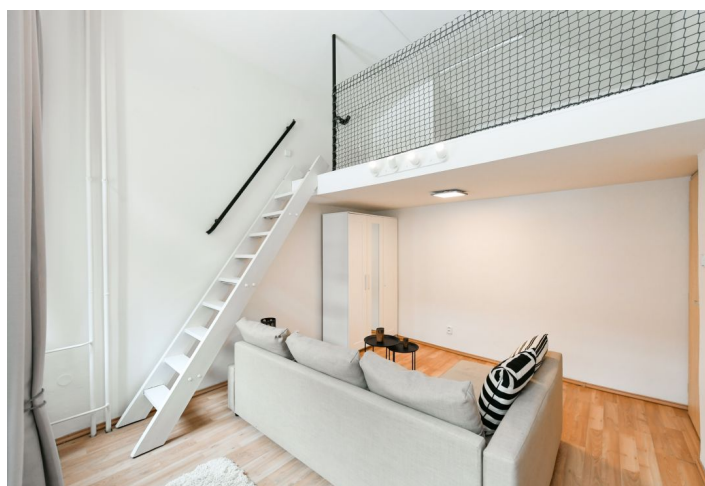
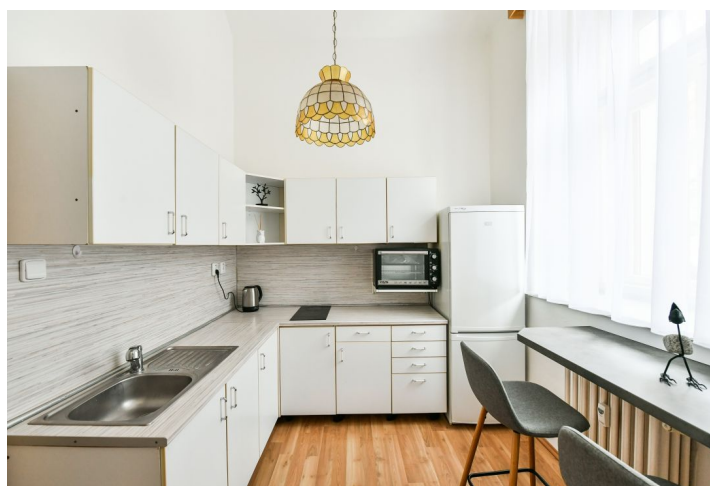




Apartment One-bedroom (2+1)

Rented

50 m², Prague 2, Vinohrady, Londýnská





Apartment One-bedroom (2+1)

Rented

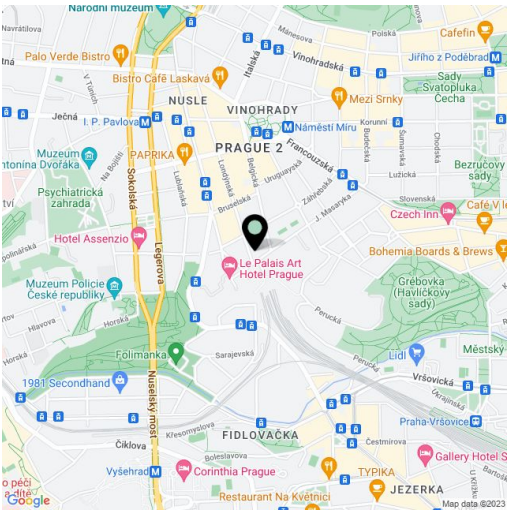
50 m², Prague 2, Vinohrady, Londýnská

Total area	50 m²
Parking	-
Cellar	-
PENB	G
Reference number	38591
Available from	Immediately

This completely newly refurbished and furnished 1-bedroom apartment on the upper ground floor of a well maintained renovated traditional building with a shared green courtyard is set on a lovely tree-lined street in the highly sought-after residential neighborhood of Vinohrady, with quick access to the city center and full amenities in close vicinity. Beautifully located just moments from Náměstí Míru and I.P. Pavlova squares with metro stations and tram lines, within walking distance of Havlíčkovy Sady Park.

The interior features a fully fitted kitchen with a breakfast bar and a living room with a large built-in gallery suitable as a study or guest bedroom. There is a bedroom facing the courtyard, a shower room, a separate toilet with a bidet shower, huge attic storage space, and an entrance hall.

Green views, high ceilings, laminated floors, tiles, central heating, washing machine, dryer, dishwasher, basic kitchenware, security blinds, automatic security shutter in the front part of the apartment. Monthly deposit for service charges, water, and heating: CZK 3,300. Electricity is billed separately.



* Area of the unit according to the Civil Code. The area consists of the sum total area of the entire unit bounded by perimeter walls.