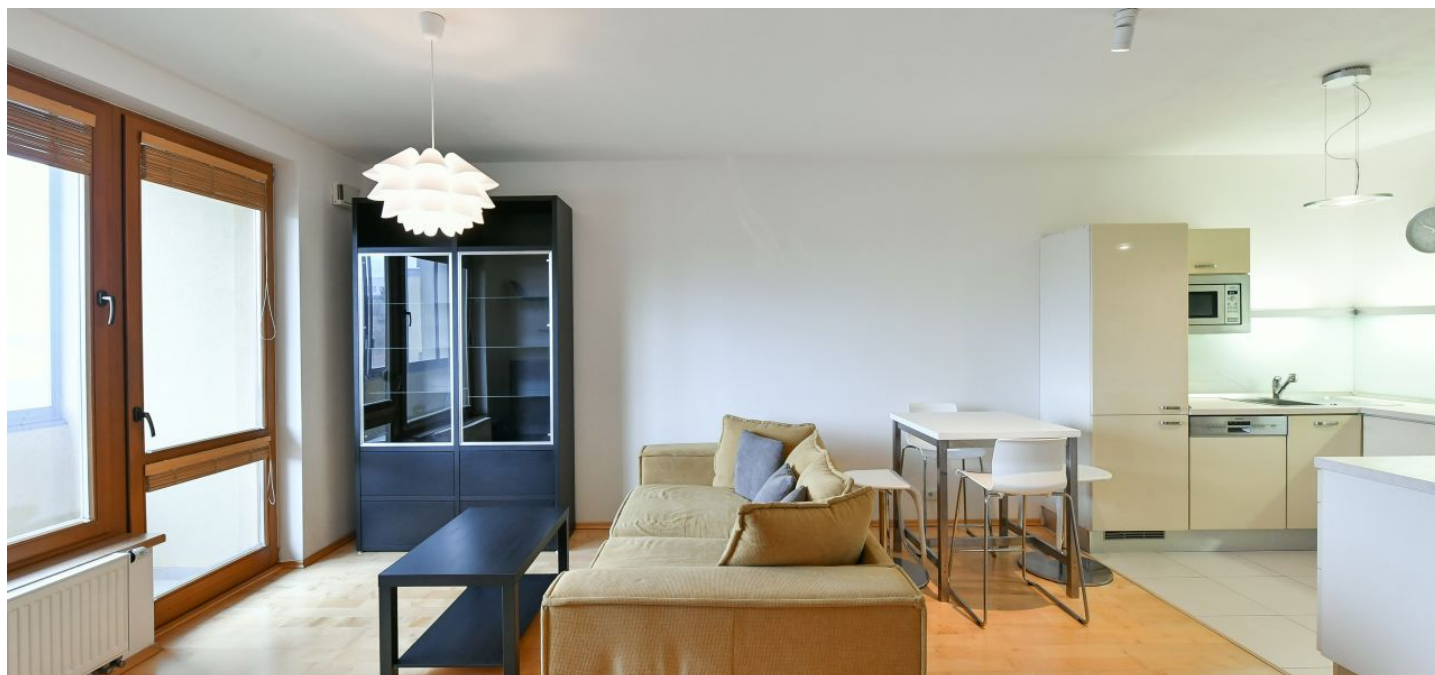




## Apartment One-bedroom (2+kk)

Rented

47 m², Prague 5, Zličín, Lipovská





## Apartment One-bedroom (2+kk)

Rented

47 m², Prague 5, Zličín, Lipovská

Total area	55 m²
Floor area*	47 m²
Loggia	8 m²
Parking	Garage parking.
Garage	Yes
Cellar	Yes

**Service price** Monthly deposit for services, water, and heating: CZK 4,000. Electricity is billed separately.

**PENB** G

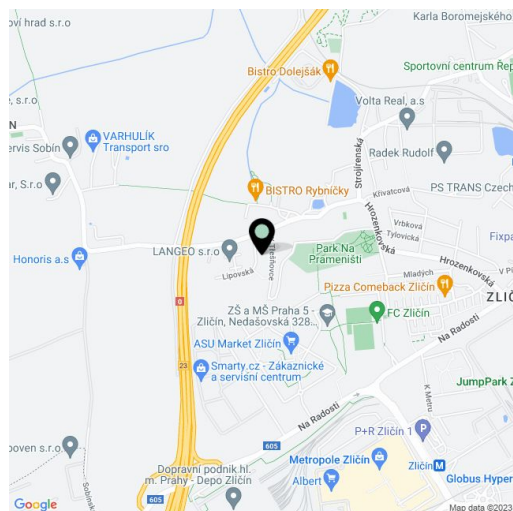
**Reference number** 38544

**Available from** Immediately

Benefiting from an enclosed balcony and parking, this furnished apartment on the 2nd floor of a modern apartment building with an elevator and courtyard garden is situated near Na Prameništi Park, just a short walk from the Metropole Zličín shopping center and Zličín metro station (line B), with quick access to the city center. Located moments from the Prague Ring Road, just a short drive from the airport (8 min.) and the Japanese School.

The interior features a living room with a dining area, a fully fitted open plan kitchen and **enclosed balcony** facing the courtyard garden, a bedroom, a bathroom with a walk-in shower and toilet, a fitted **walk-in closet**, and an entrance hall with built-in wardrobes.

**Hardwood floors**, tiles, security entry door, blinds, central heating, air-conditioning unit, washing machine, dishwasher, induction cooktop, microwave oven, TV, satellite dish, **cellar**, camera system and pram storage in the building. A **garage parking** space is included.



\* Area of the unit according to the Civil Code. The area consists of the sum total area of the entire unit bounded by perimeter walls.