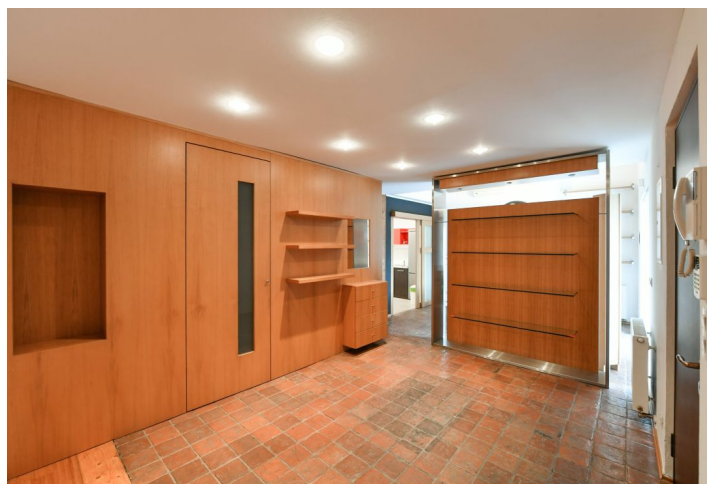




## Apartment Three-bedroom (4+1)

Rented

189 m<sup>2</sup>, Prague 1, Staré Město, Žatecká





## Apartment Three-bedroom (4+1)

Rented

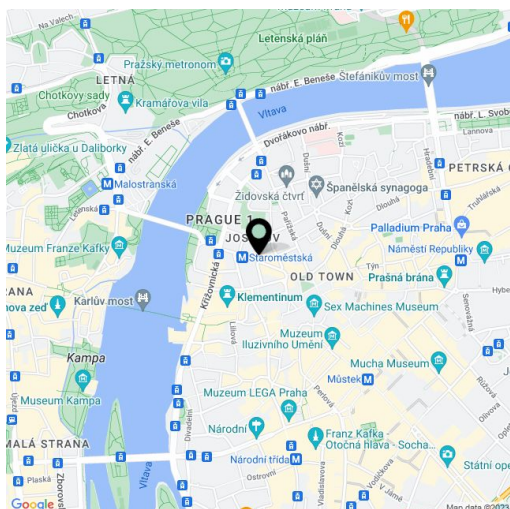
189 m<sup>2</sup>, Prague 1, Staré Město, Žatecká

Total area	198 m <sup>2</sup>
Floor area*	189 m <sup>2</sup>
Terrace	9 m <sup>2</sup>
Parking	Parking in a nearby public garage.
Garage	Yes
Cellar	-
PENB	G
Reference number	38298
Available from	Immediately

This high quality semi furnished 3-bedroom 3-bathroom split-level attic apartment with a terrace is situated on the 5th floor in a fully refurbished Art Nouveau building with a lift and preserved original details. Located in the sought after Jewish quarter just steps from the Vltava riverbank, with the Old Town Square, Charles Bridge, Malá Strana, and more historic and cultural sights within comfortable walking distance. The surrounding area including the world famous Pařížská street boasts luxurious shops, high-end fashion boutiques and quality restaurants and bistros. Staroměstská metro station and trams are a few steps away.

The lower level includes a living room, a fully fitted kitchen with a dining area and access to the **terrace** facing the courtyard, a bedroom with an en-suite bathroom (walk-in shower, bidet, toilet), a bedroom with a **walk-in closet**, a family bathroom (**massage** shower, bidet, toilet), a utility room, a **walk-in closet**, and an entrance hall. The upper floor offers a spacious **gallery** with a guest bedroom / study, and a third bedroom (bathtub, bidet, toilet).

**Air-conditioning, hardwood parquet floors**, Italian terracotta tiles, ceramic tiles, built-in wardrobes and storage, gas boiler, washer, dryer, dishwasher, alarm. **Parking** is available in the nearby Rudolfinum public garage. Monthly deposit for service charges and water: CZK 1,200 for one person. Gas and electricity are billed separately.



\* Area of the unit according to the Civil Code. The area consists of the sum total area of the entire unit bounded by perimeter walls.