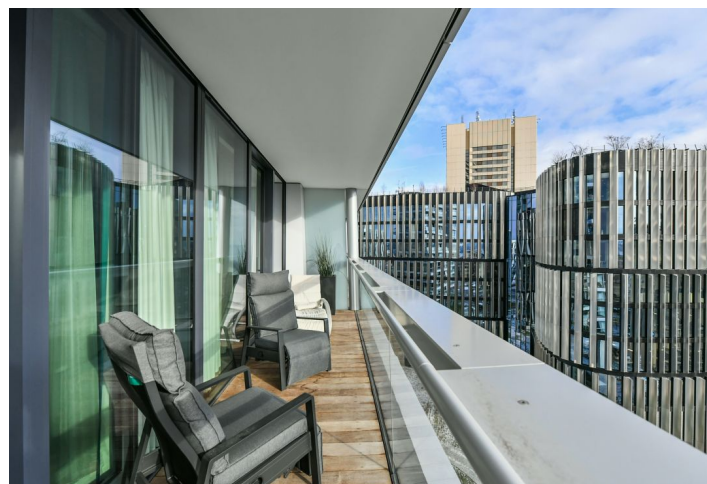




## Apartment Two-bedroom (3+kk)

Ask for price

119.9 m², Prague 4, Krč, Milevská





## Apartment Two-bedroom (3+kk)

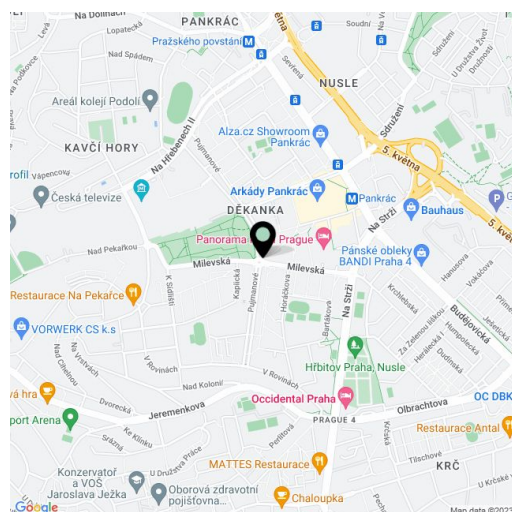
[Ask for price](#)119.9 m<sup>2</sup>, Prague 4, Krč, Milevská

Total area	137 m <sup>2</sup>
Floor area*	120 m <sup>2</sup>
Terrace	17 m <sup>2</sup>
Parking	Parking available.
Garage	Yes
Cellar	-
Service price	Monthly deposit for services, water, and heating: CZK 21,000. Electricity is billed separately.
PENB	B
Reference number	38287
Available from	Immediately

High-end apartment in a high-end building suitable for the most discriminating clients. This fully furnished 2-bedroom 2-bathroom apartment surrounded by 2 terraces benefiting from far-reaching open views is on the 10th floor of the unique, 104 m high, thirty-floor V Tower highrise, currently the tallest residential building in Prague. Located in the Pankrác business zone in close vicinity of Central Park and Kavčí Hory Park, convenient to Prague 4 international schools. Numerous amenities include a 24/7 reception offering concierge services, security service, a fitness center, an indoor pool, a spa incl. a whirlpool, a Finnish and steam sauna, a golf simulator, a conference room, a private screening room, a playroom, a fast charging station for electric cars, and more. The landmark building benefits from efficient and sustainable technological solutions incl. renewable energies, healthy materials, economical cooling, heating, and ventilation.

Two terraces run along the entire perimeter of the apartment and are accessible from all main rooms. The interior includes a 50 m<sup>2</sup> living room with a dining area, a fully fitted open plan kitchen and views of Central Park, and two bedrooms. There are two en-suite Carrara marble bathrooms (bathtub, bidet, toilet/walk-in shower, bidet, toilet, TV), a master **walk-in closet**, a utility room, an additional separate toilet, and an entrance hall.

**Top-of-the-line equipment**, floor-to-ceiling French windows throughout, natural materials, built-in wardrobes and storage, **hardwood floors**, carpets, security entry door, smart home system, **professional home cinema with a 4K projector and Dolby Atmos sound system**, master switch, automatic internal blinds, underfloor heating, washer, dryer, **Poggenpohl** kitchen, dishwasher, induction cooktop, steam oven, bar and wine cabinet, video entry phone, barrier free access. One **garage parking space** included in the price, and a second will be available upon agreement.



\* Area of the unit according to the Civil Code. The area consists of the sum total area of the entire unit bounded by perimeter walls.