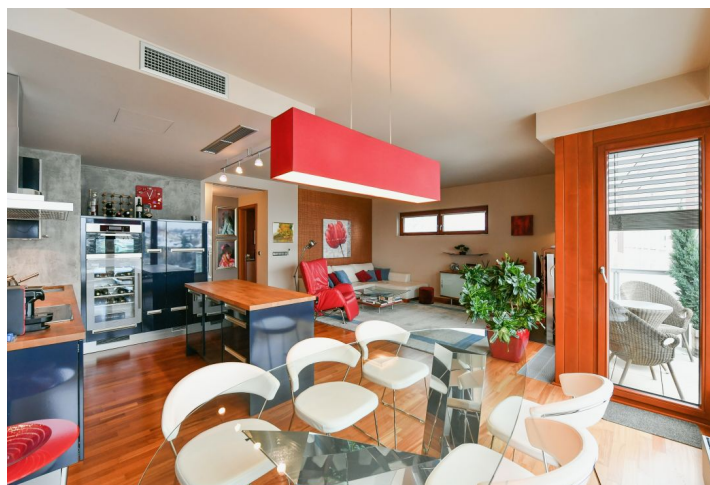
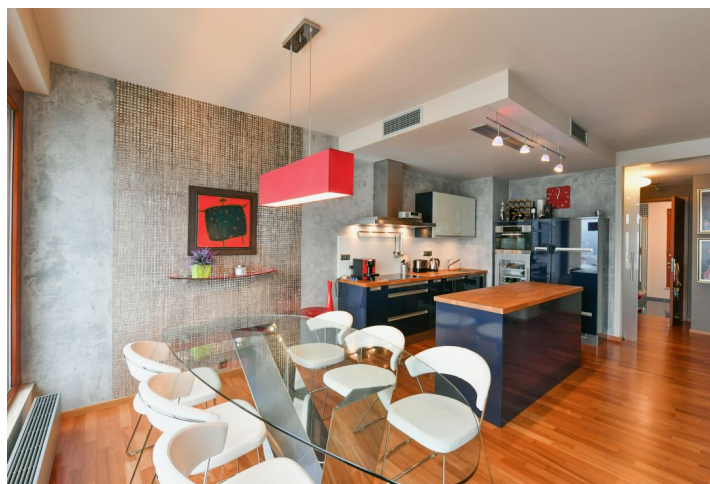
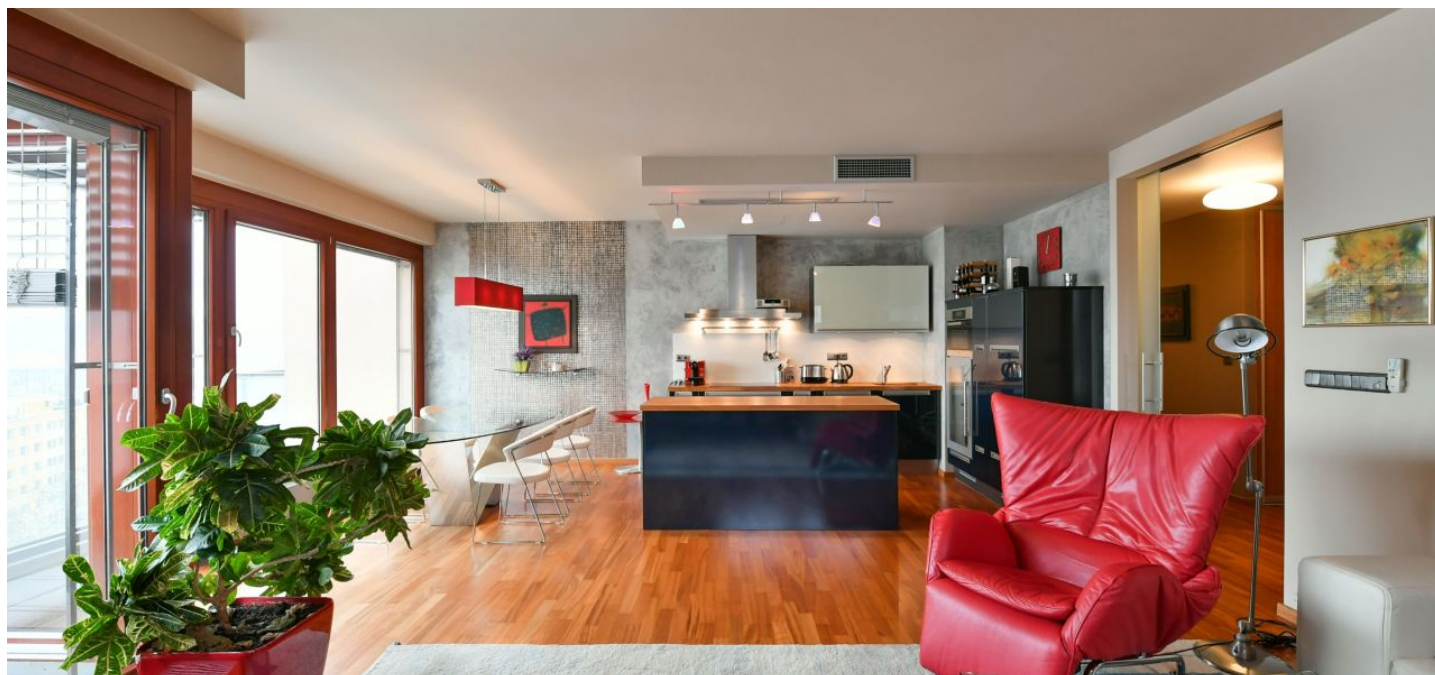




Apartment Two-bedroom (3+kk)

Rented

110 m², Prague 4, Podolí, Na Topolce





Apartment Two-bedroom (3+kk)

Rented

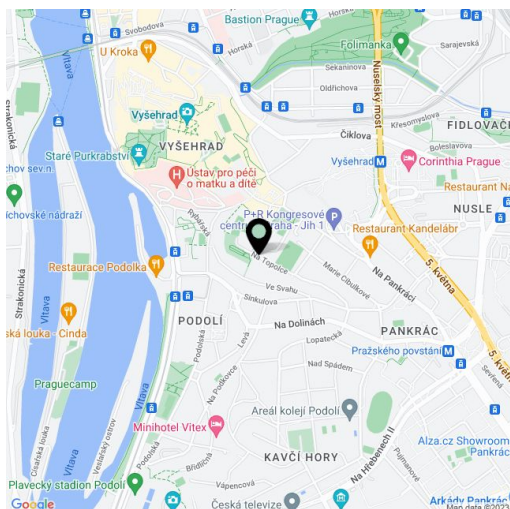
110 m², Prague 4, Podolí, Na Topolce

Total area	115 m ²
Floor area*	110 m ²
Balcony	5 m ²
Parking	Garage parking.
Garage	Yes
Cellar	Yes
PENB	G
Reference number	38029
Available from	Immediately

Apartment near the Vyšehrad Castle. Benefiting from a balcony and far reaching green views, this fully furnished 2-bedroom 2-bathroom apartment is on the 5th floor of a contemporary building with a daily reception, a lift and a shared courtyard garden. Designed by the Šafer Hájek Architekti studio, the building won the Building of the Year 2009 award. Set in a slope in a quiet street in Nusle, Prague 4, a short walk from the Vyšehrad Castle Gardens and Lumírový sady Park, a five min. walk from the Vyšehrad metro station (two stops to the city center), and the Prague Congress Centre. Within easy reach of the Pražského povstání metro station, the Prague 4 business district, and full amenities.

The interior features a living room with a fully fitted open plan kitchen and access to the **balcony**, a master bedroom with a fitted **walk-in closet** and an en-suite bathroom (walk-in shower, bidet, toilet), a study / second bedroom, a shower room with a toilet, and an entrance hall with built-in wardrobes and storage.

Hardwood floors, carpets, tiles, security entry door, exterior and interior blinds, central heating, dishwasher, induction cooktop, microwave oven, wine fridge, garden furniture, TV, video entry phone, UPC cable connection, **two cellars**. **Two garage parking spaces** are included. Monthly deposit for service charges and utilities CZK 7,500. Available from April 2021.



* Area of the unit according to the Civil Code. The area consists of the sum total area of the entire unit bounded by perimeter walls.